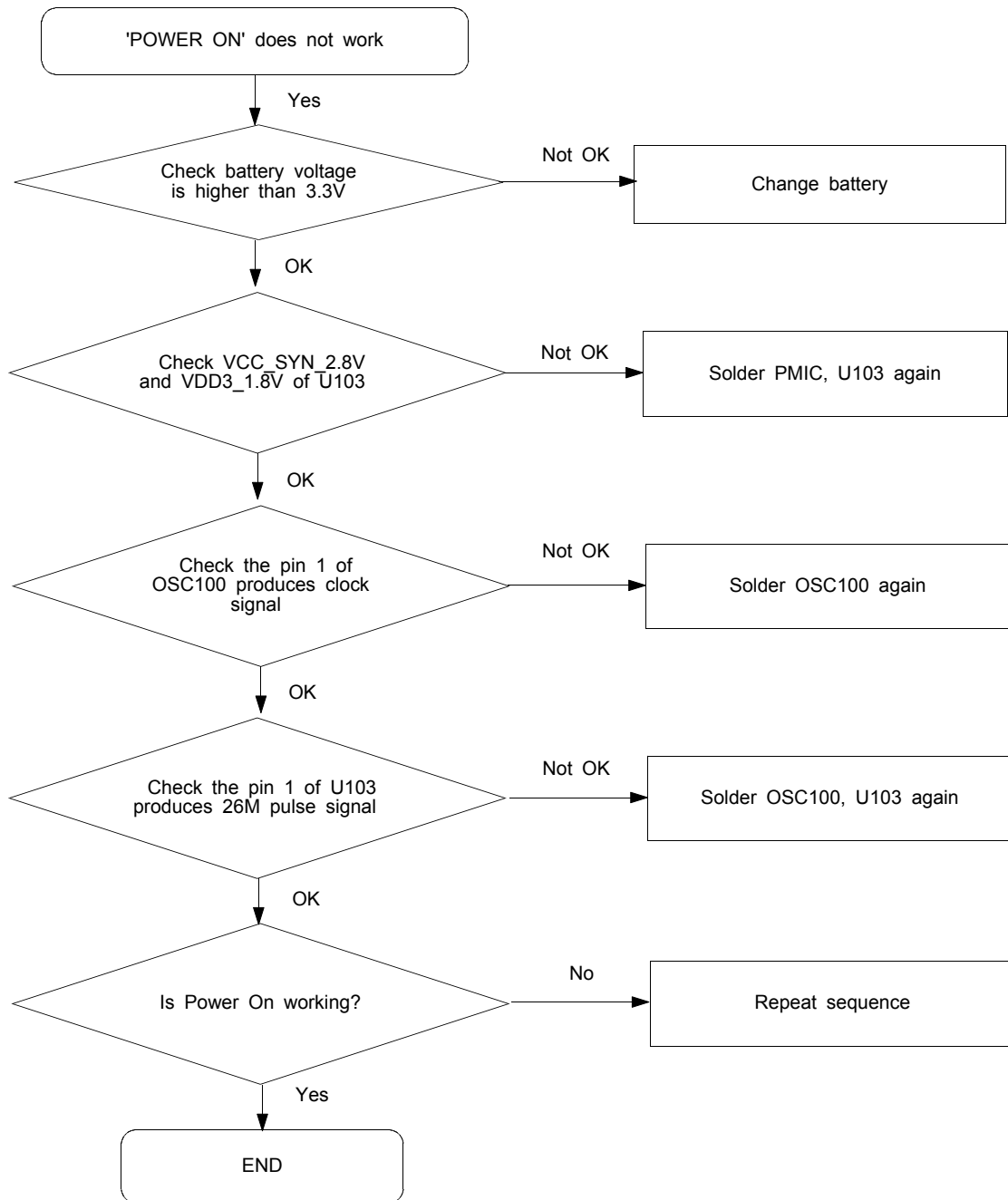


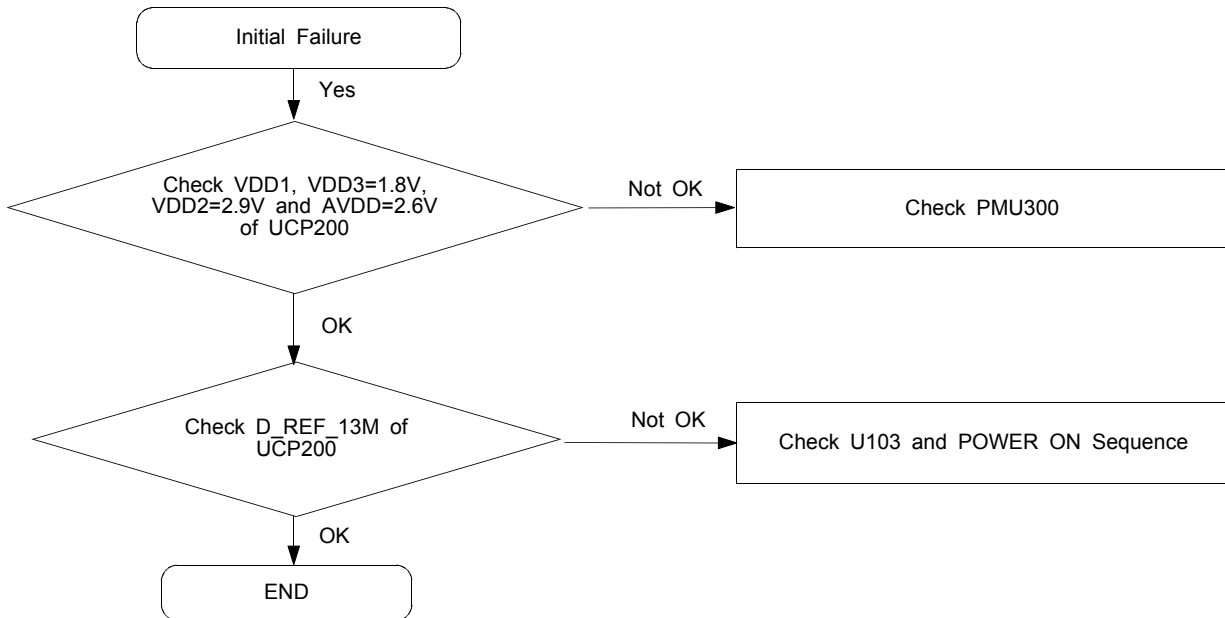
9. Flow Chart of Troubleshooting

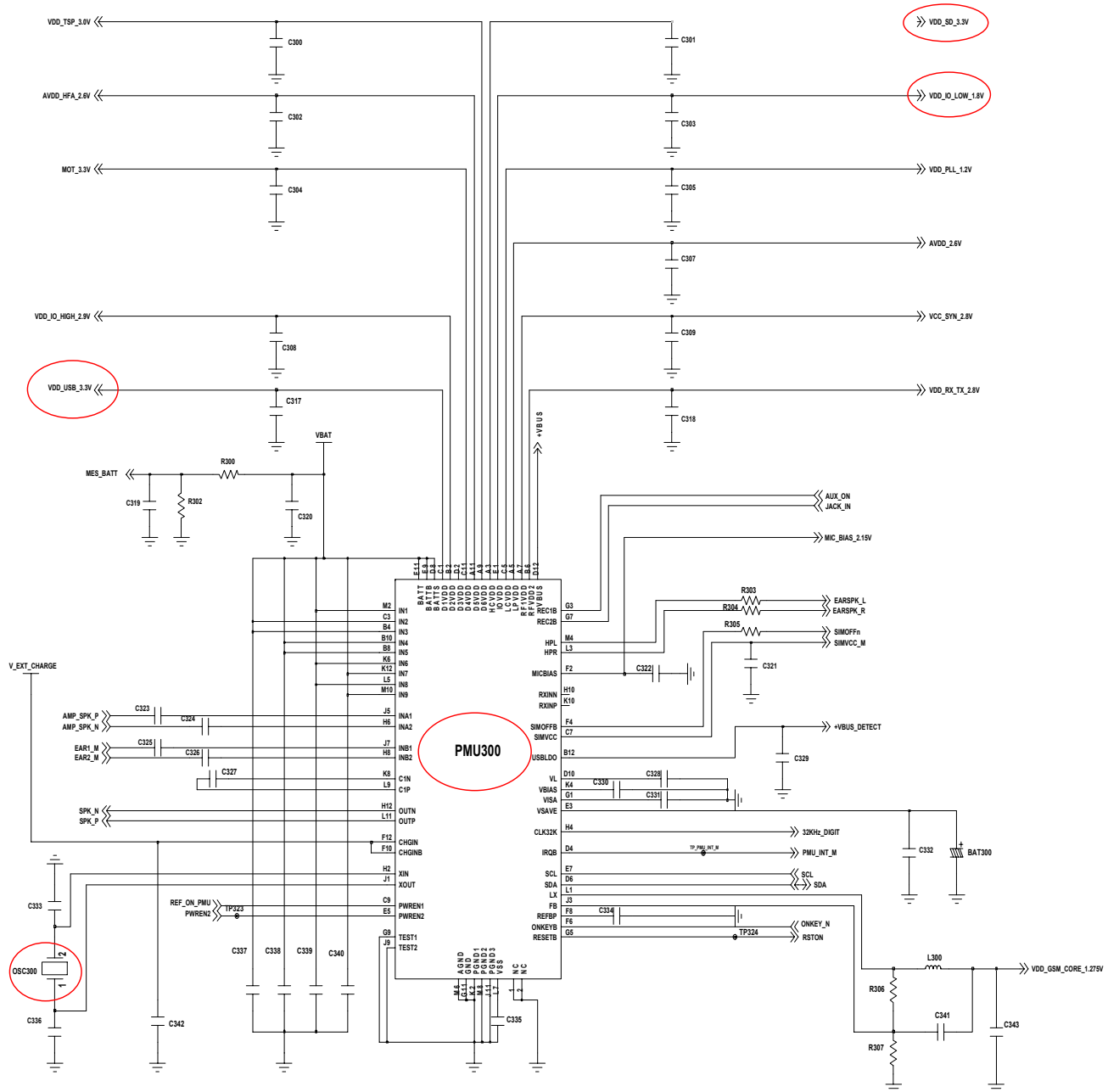
www.dianzilib8.net

9-1. Power On

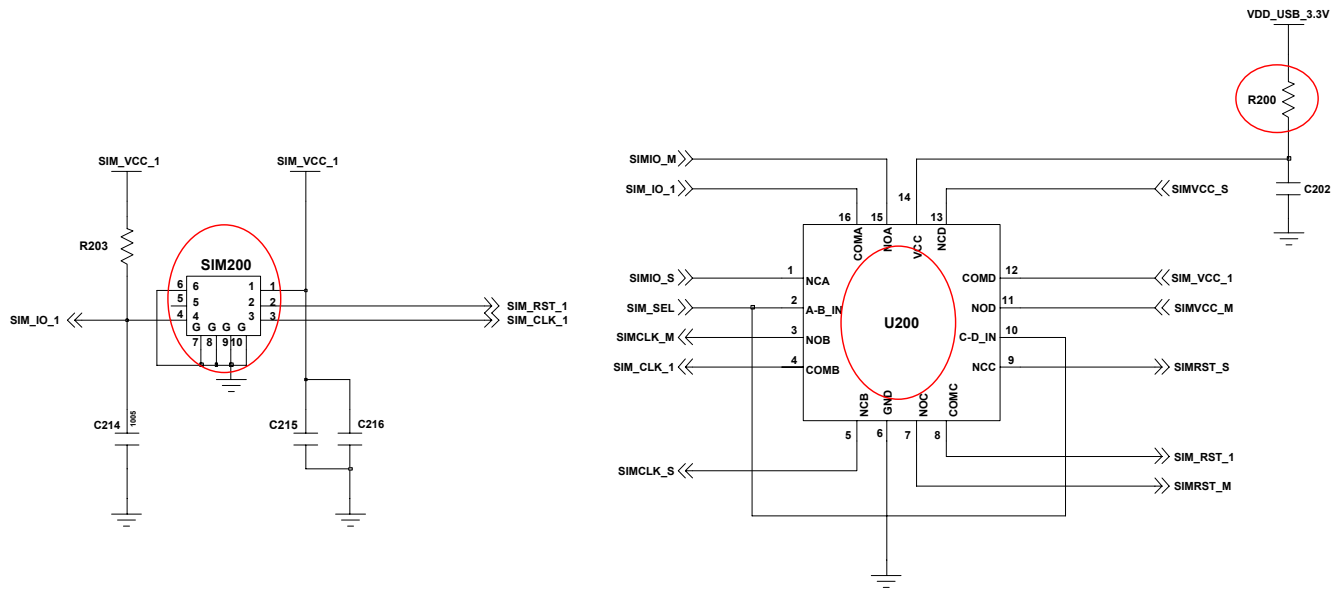
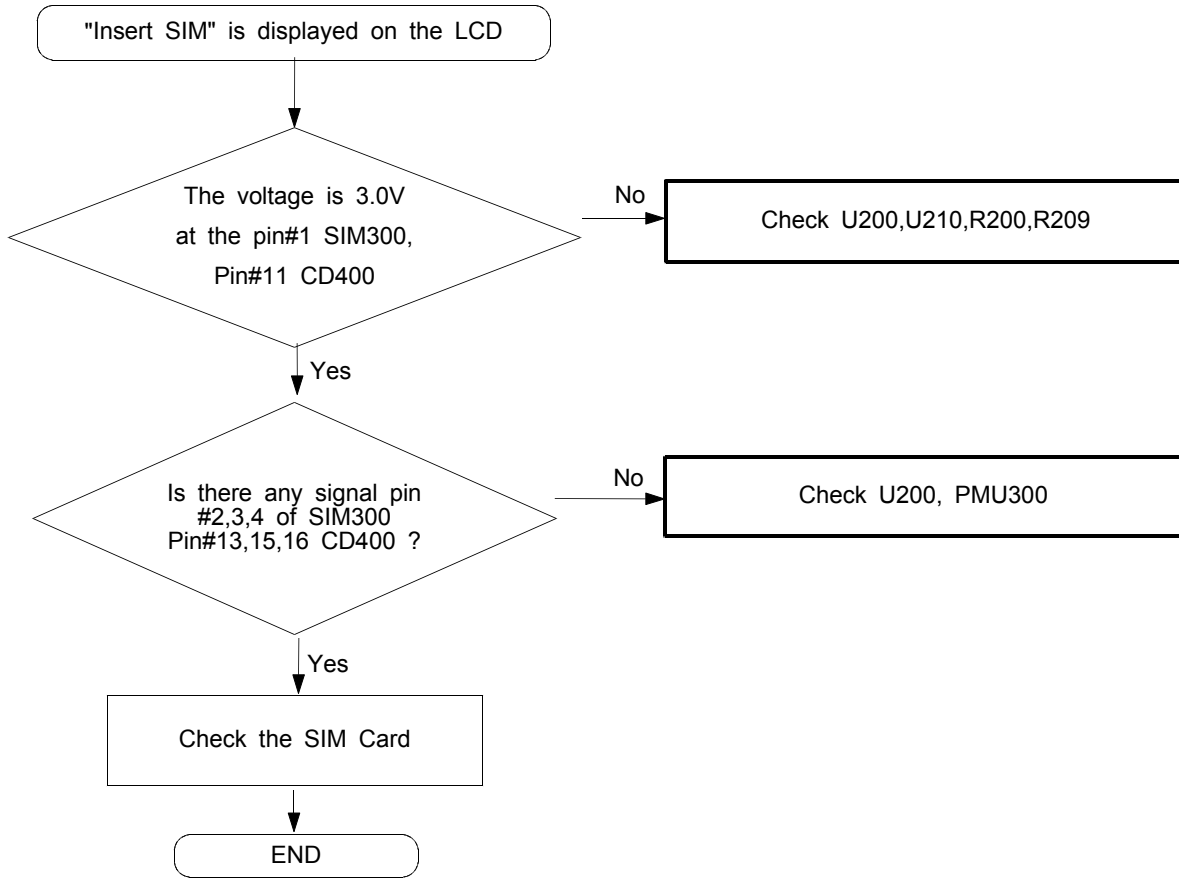


9-2. Initial

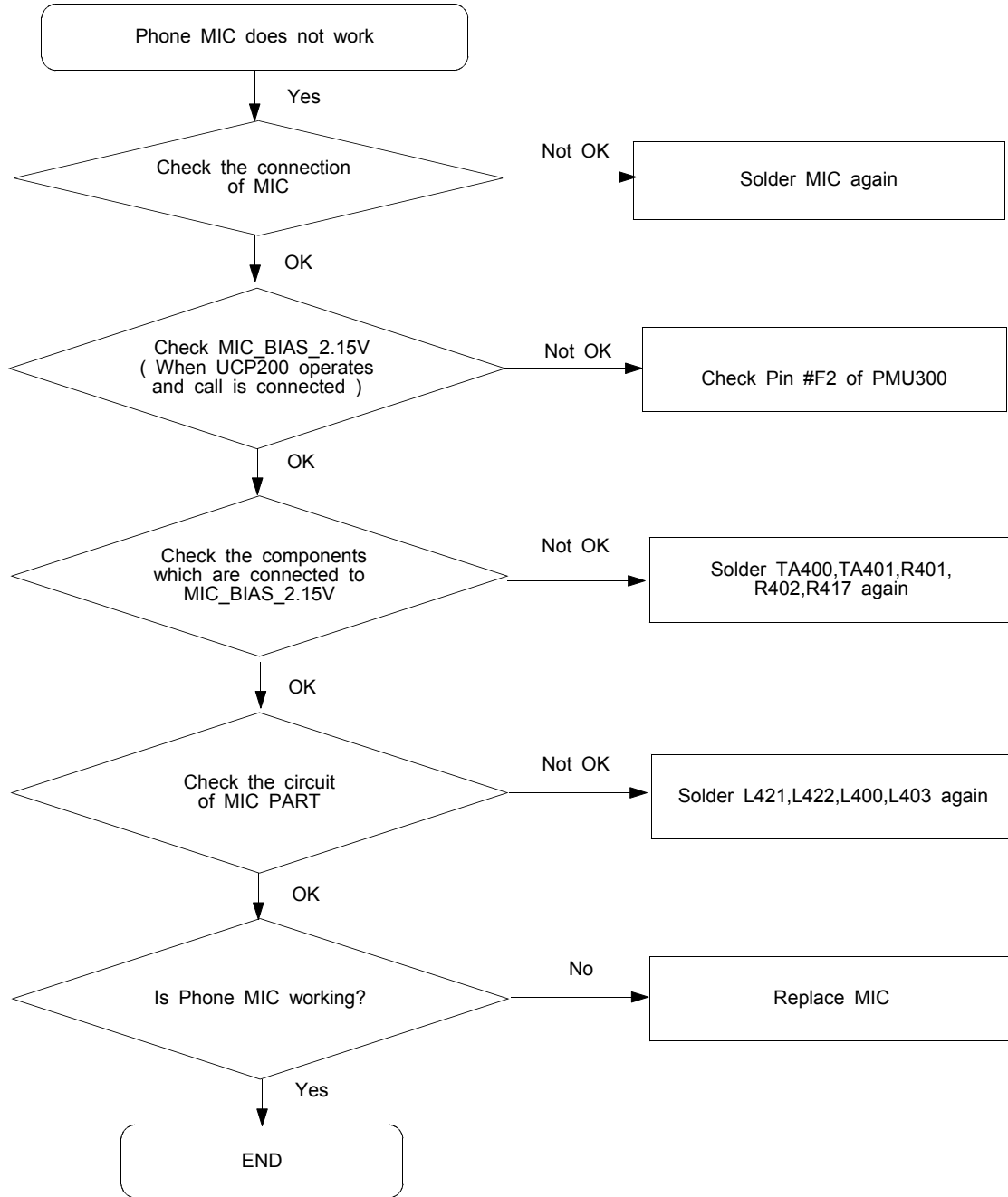


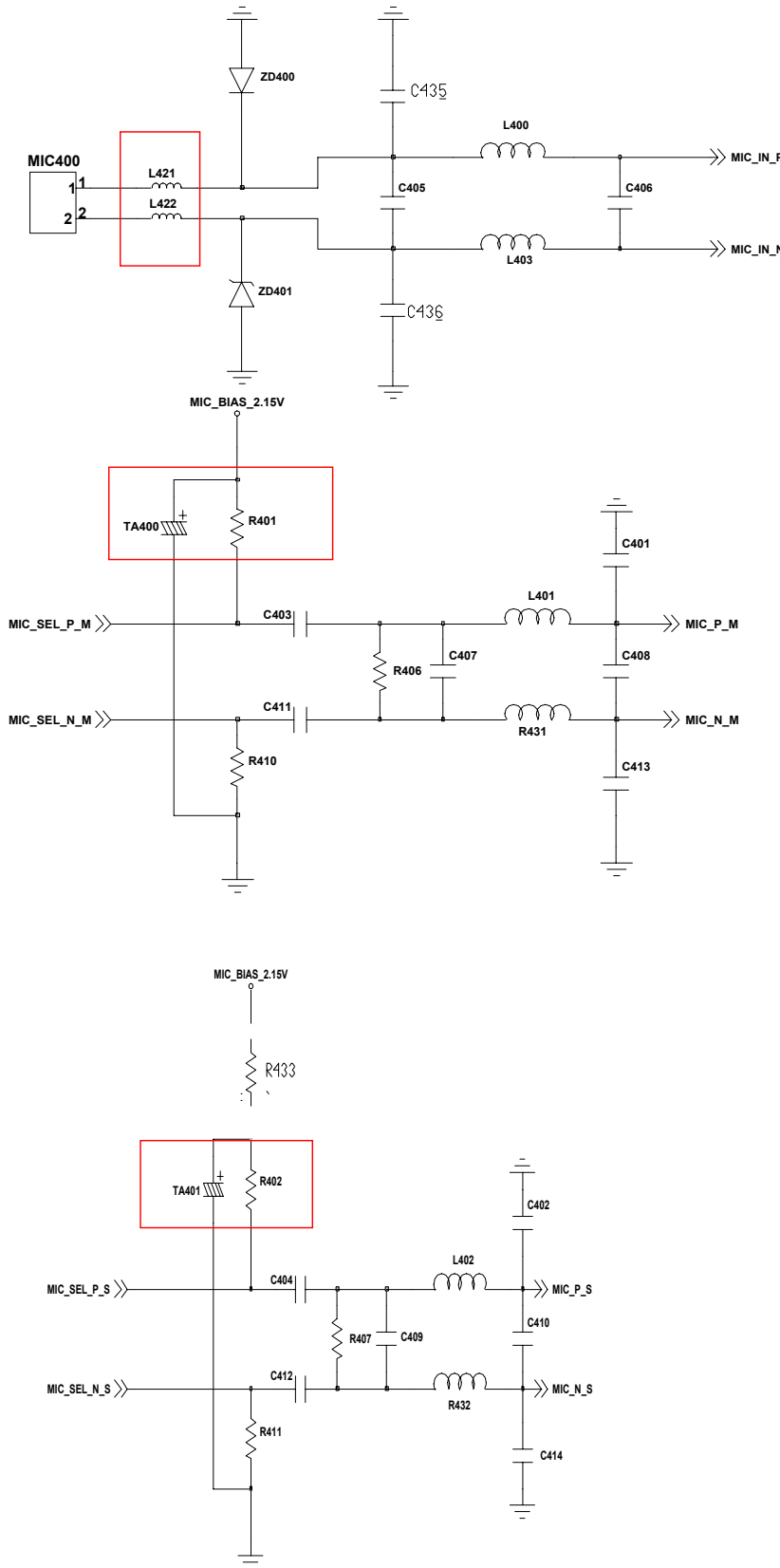


9-3. SIM Part

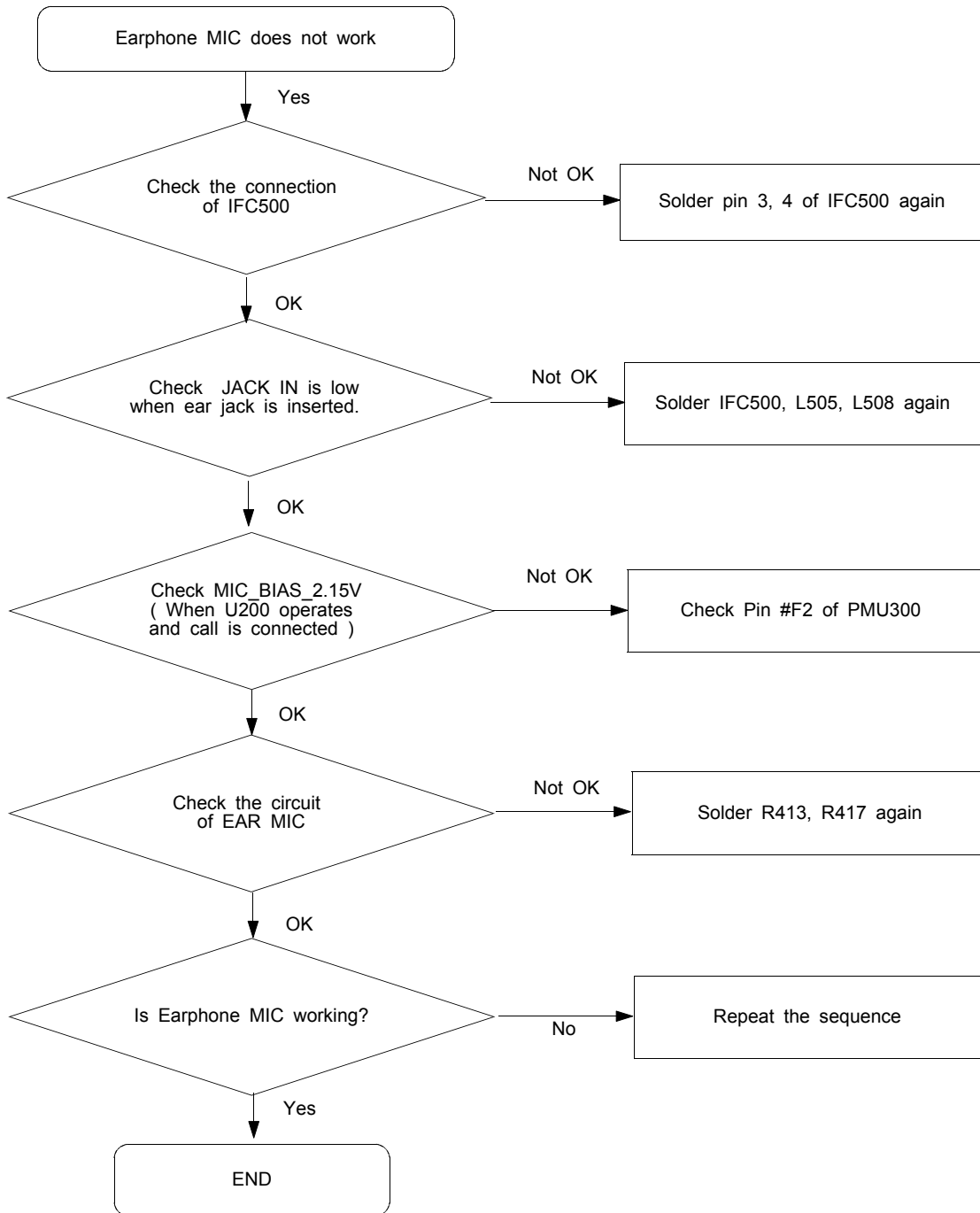


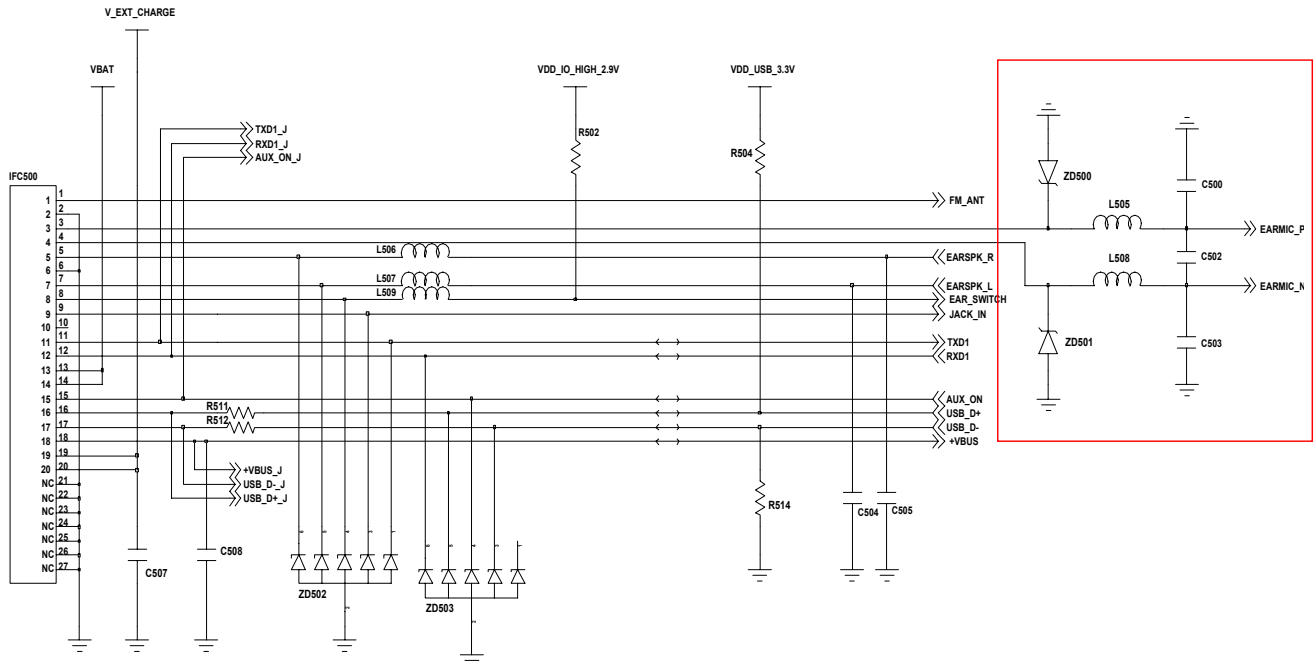
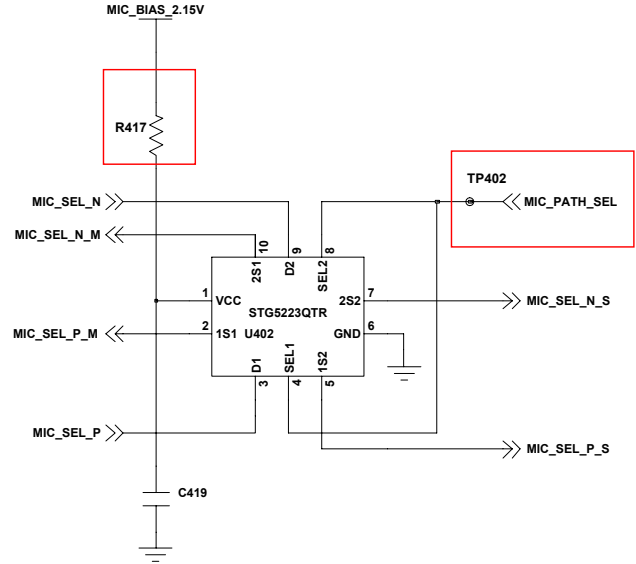
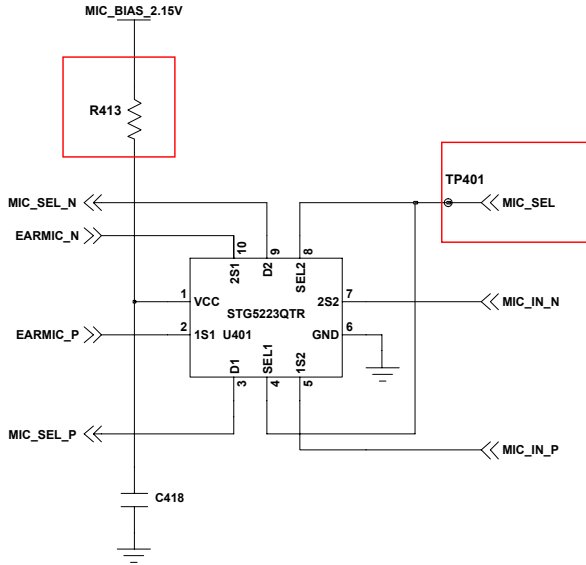
9-4. Microphone Part - Phone MIC



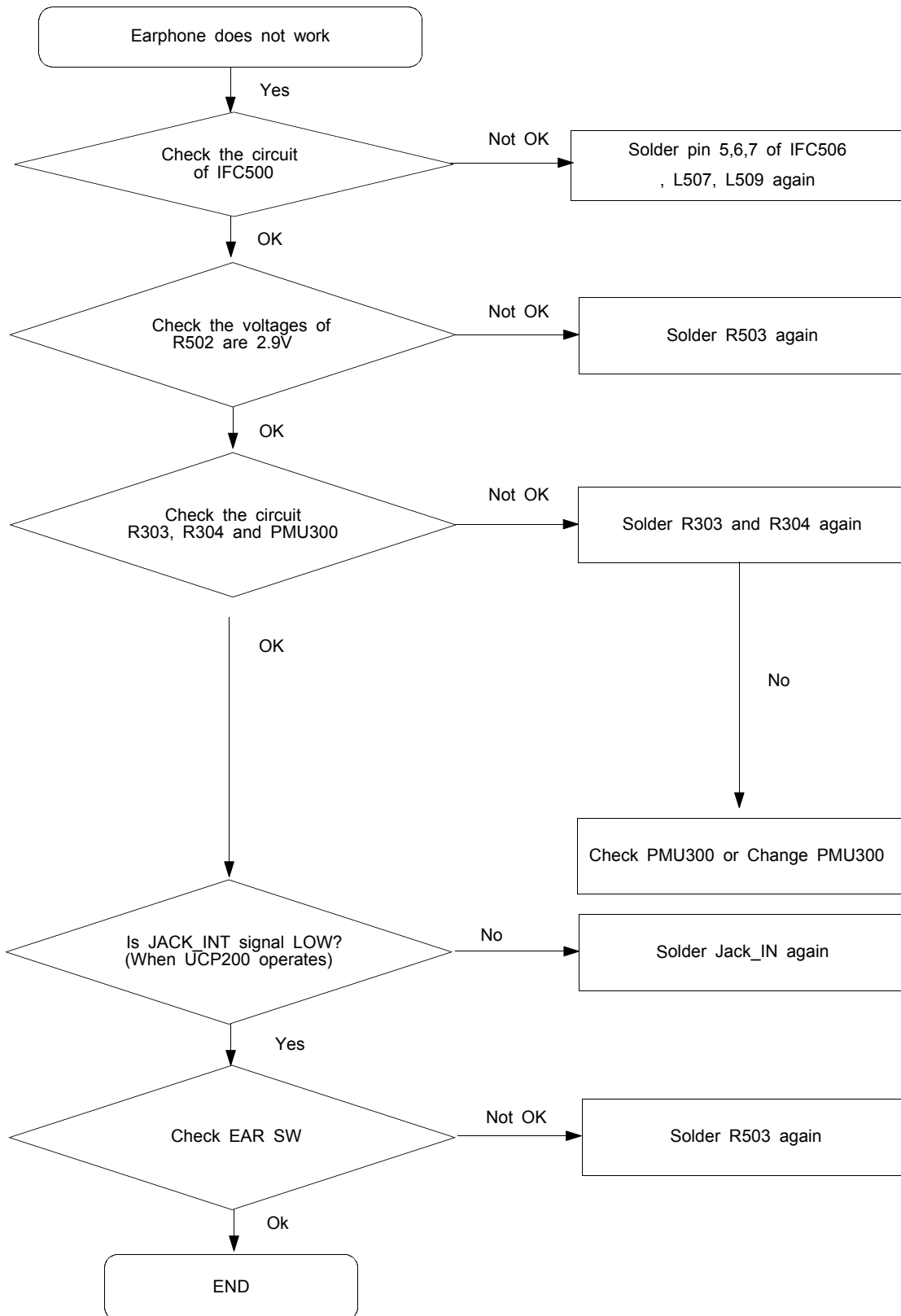


9-5. Microphone Part - Earphone MIC

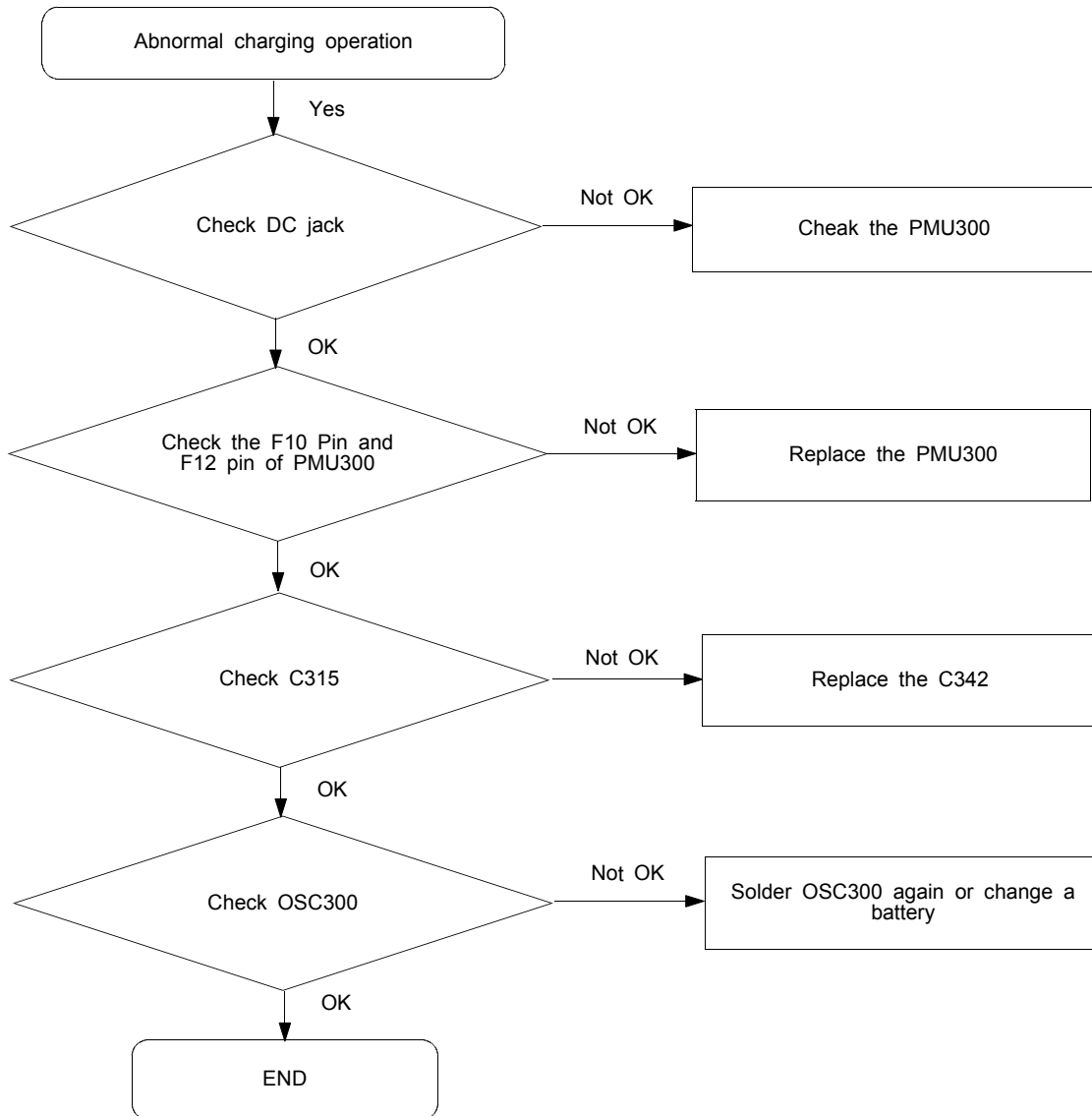




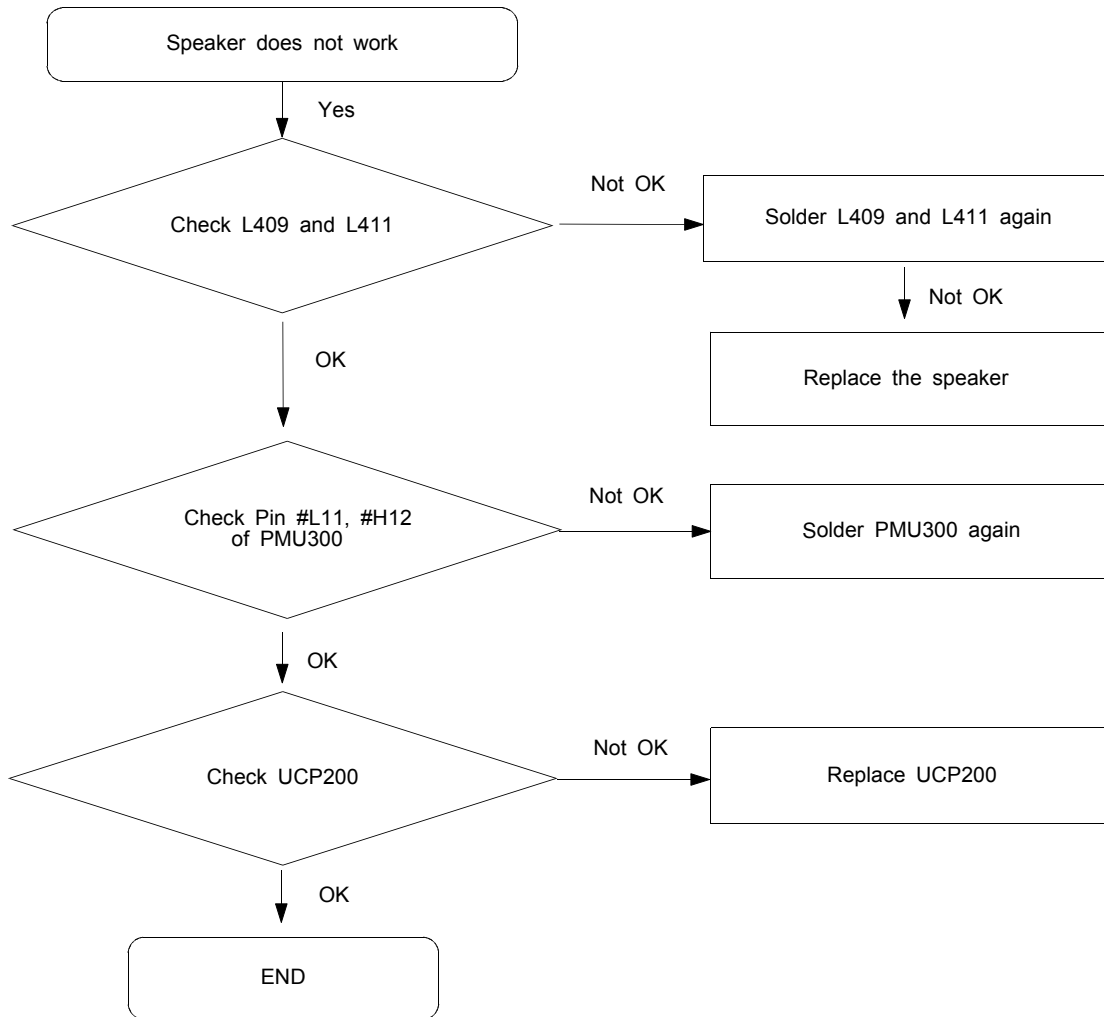
9-6. Earphone Part



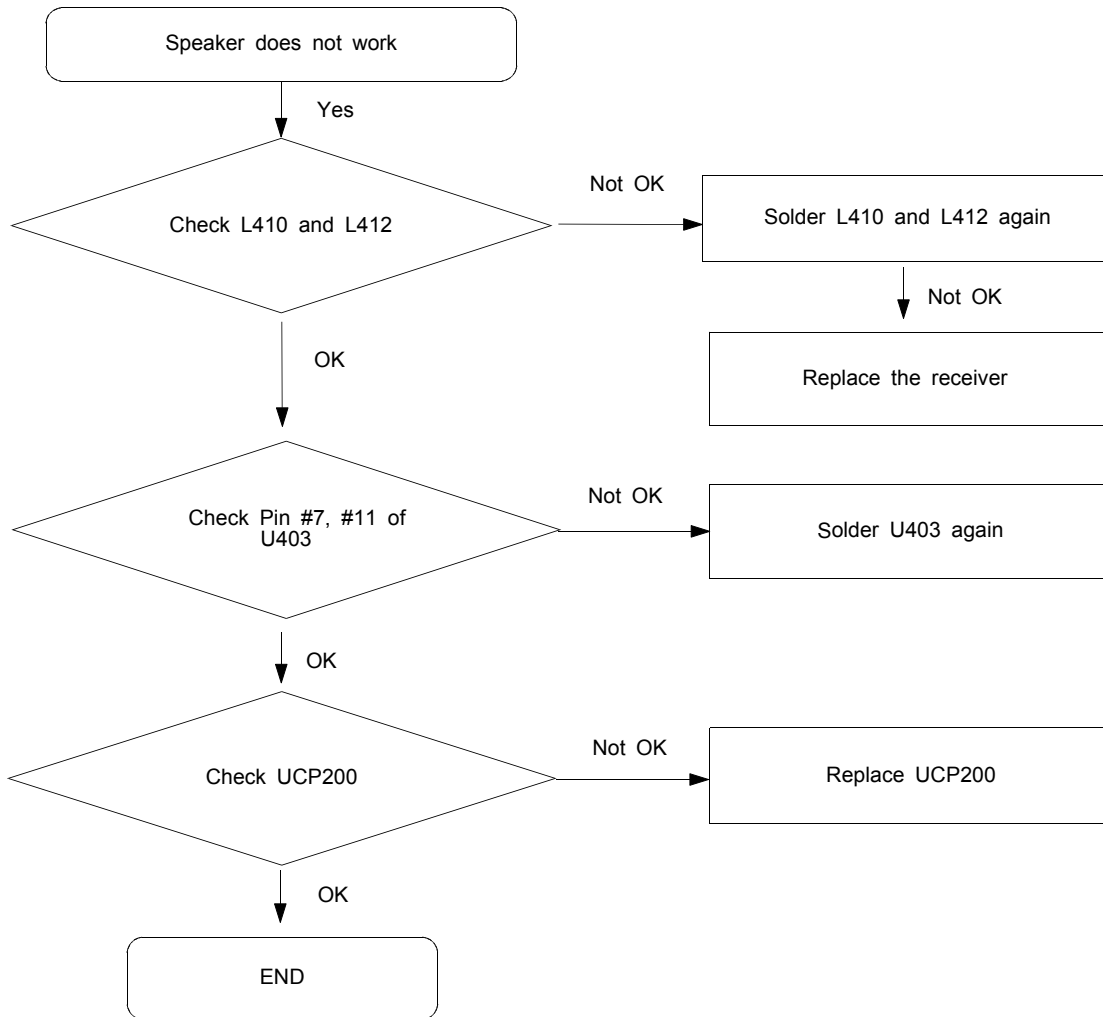
9-7. Charging Part

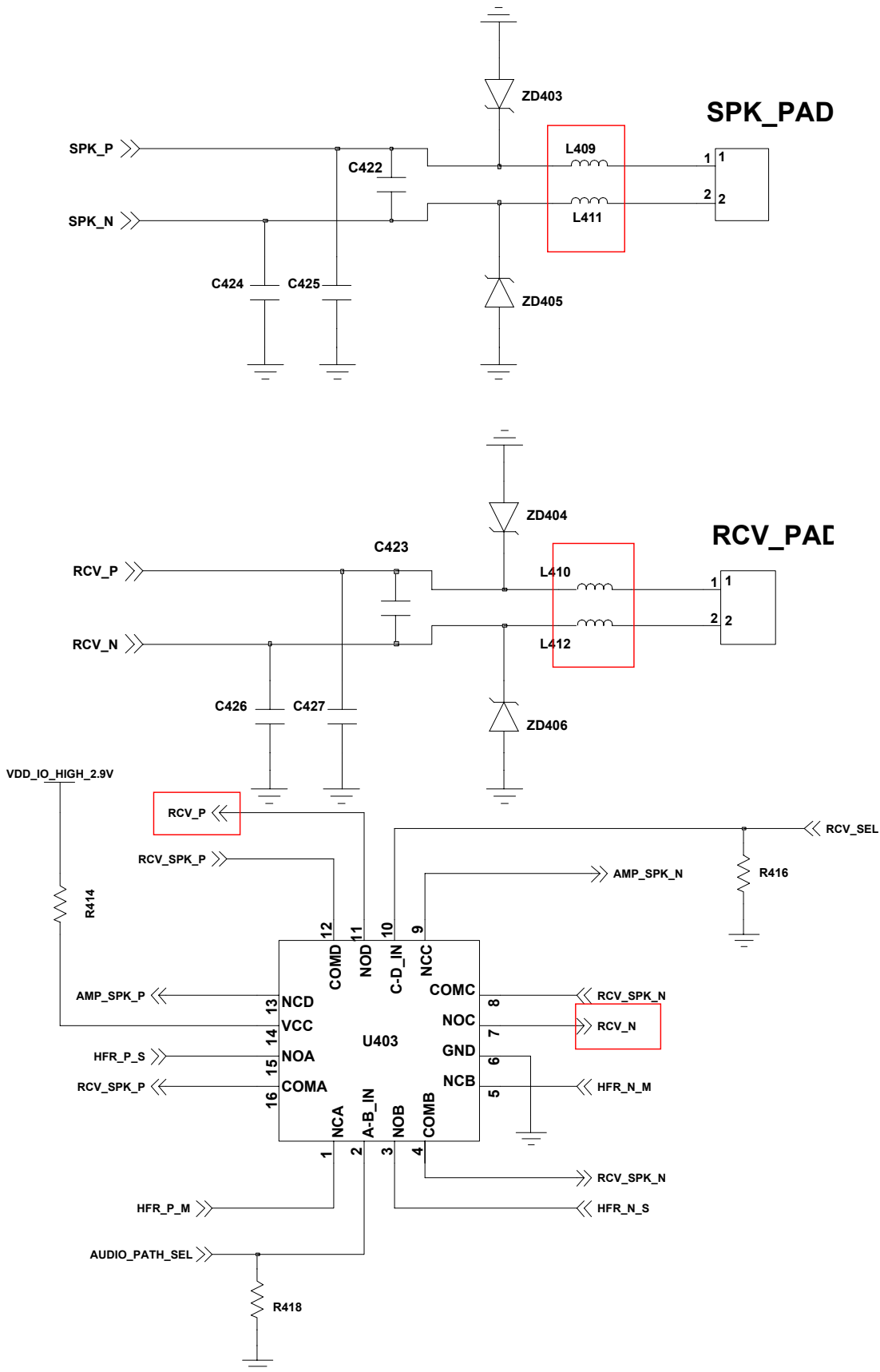


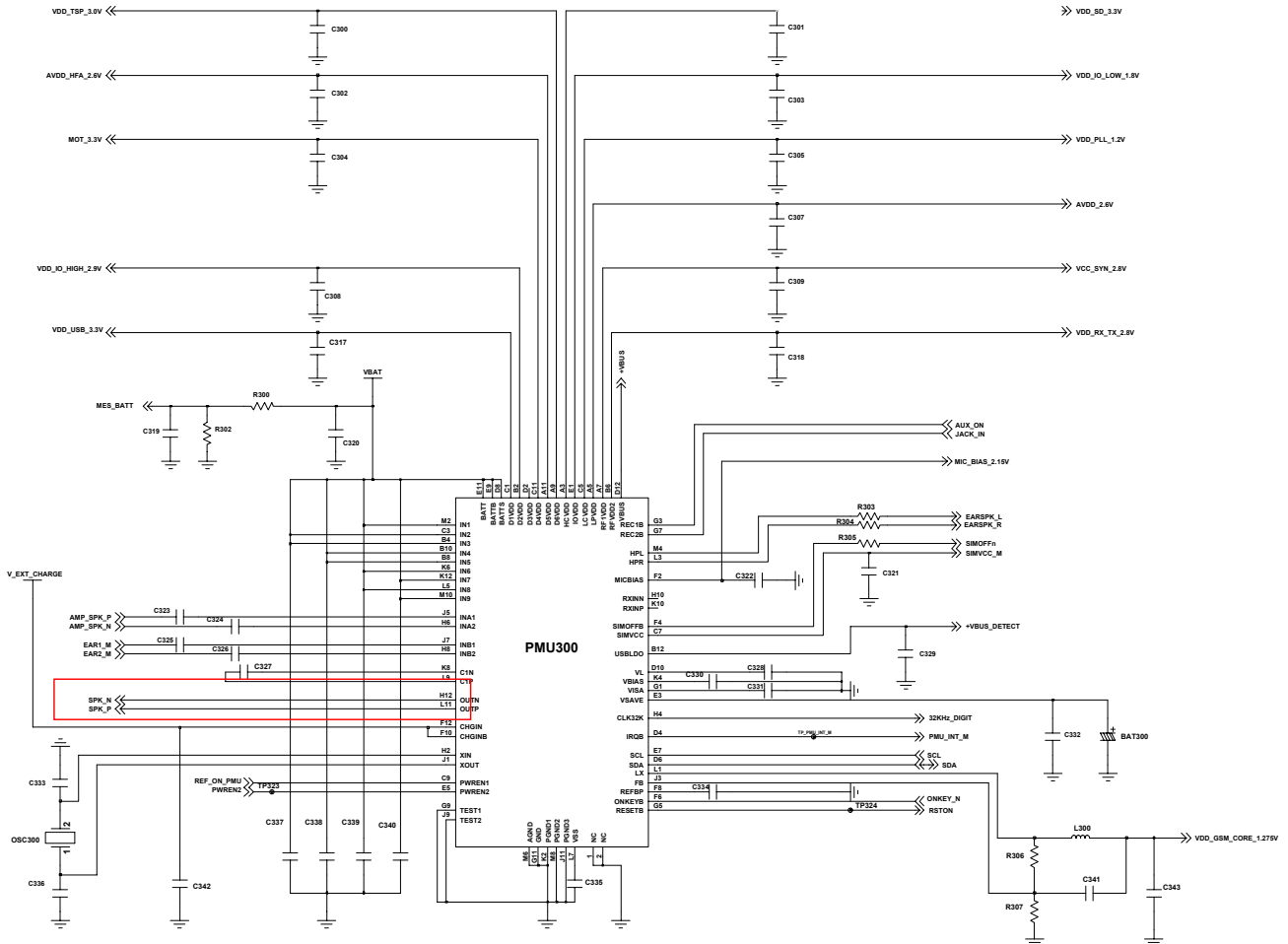
9-8. Speaker Part



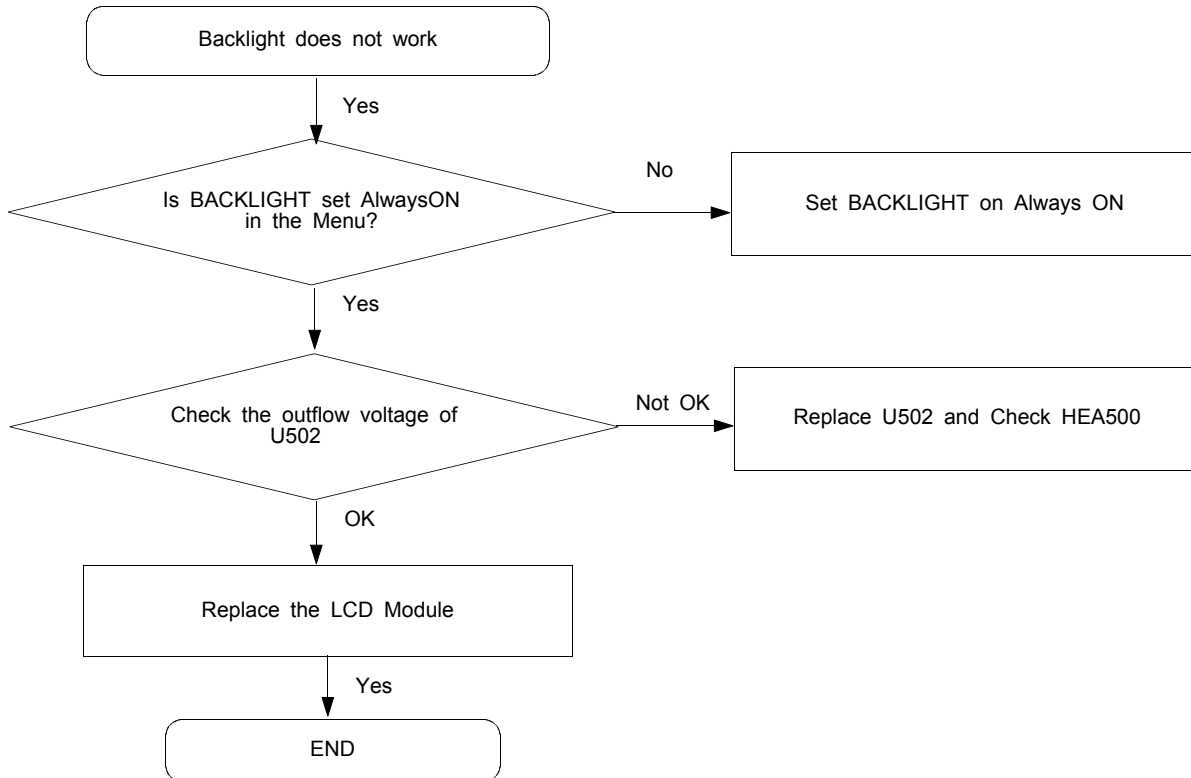
9-9. Receiver Part

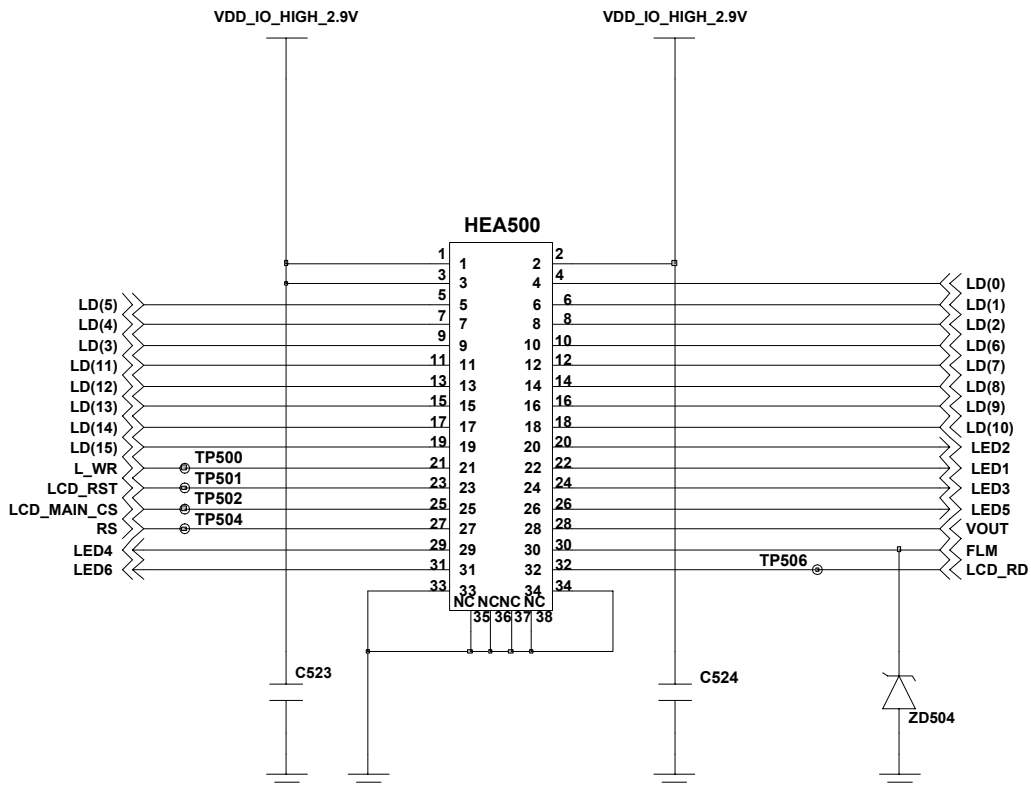
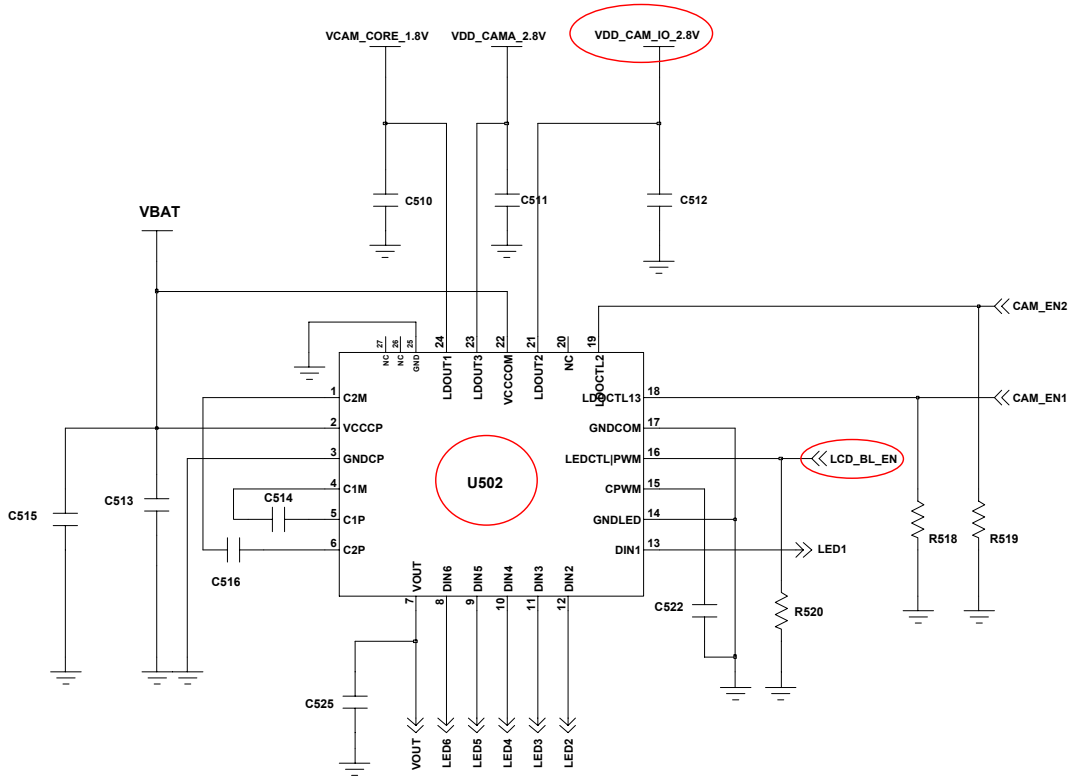




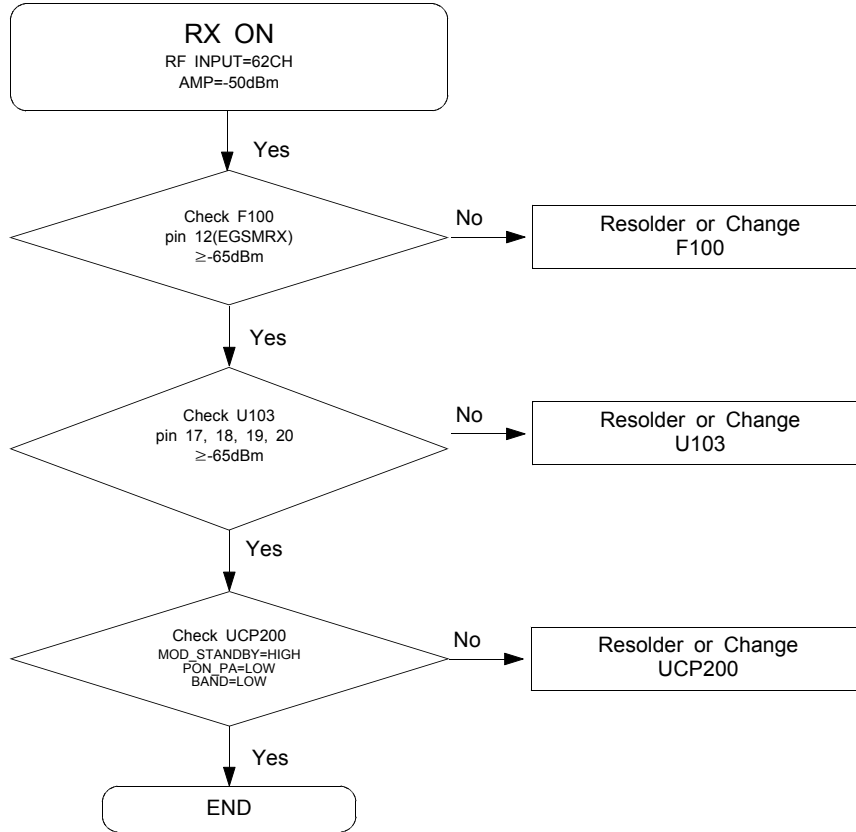


9-10. Back Light (for Color Main LCD)

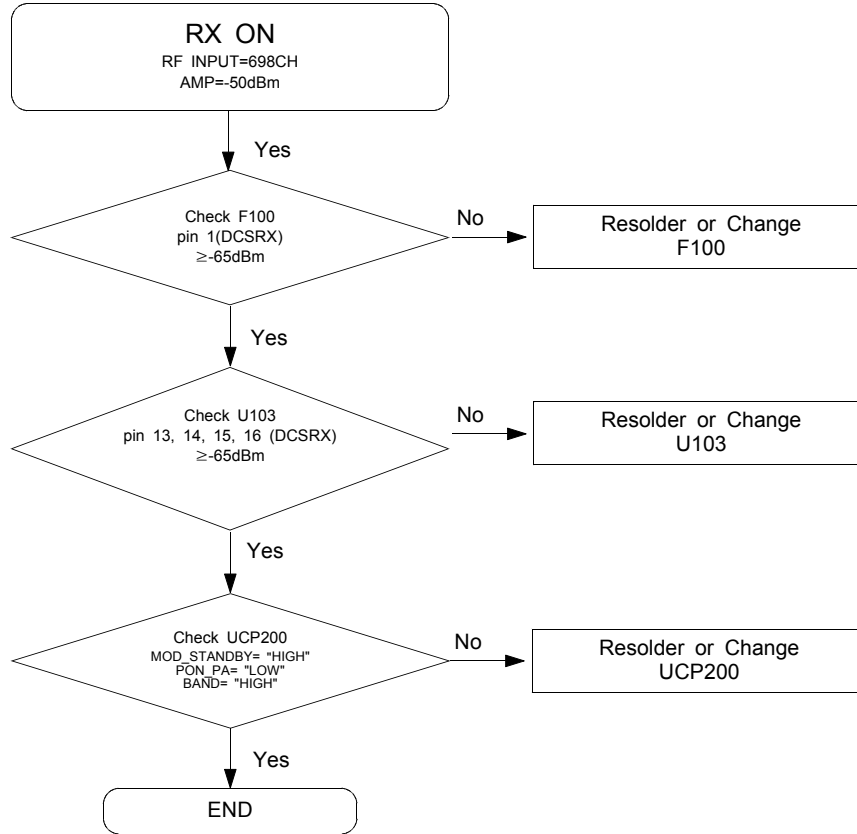


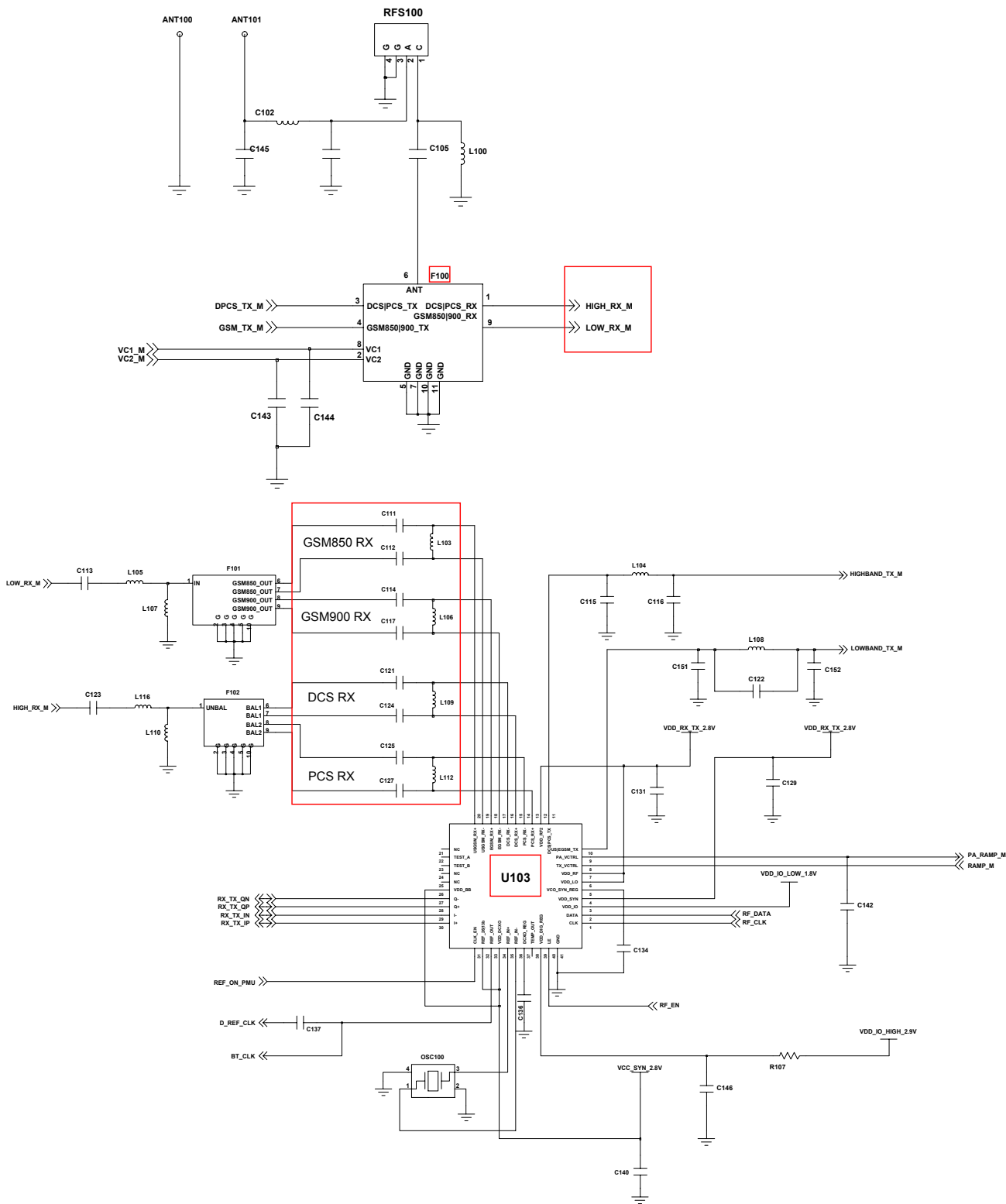


9-11. LOW BAND Receiver -Master

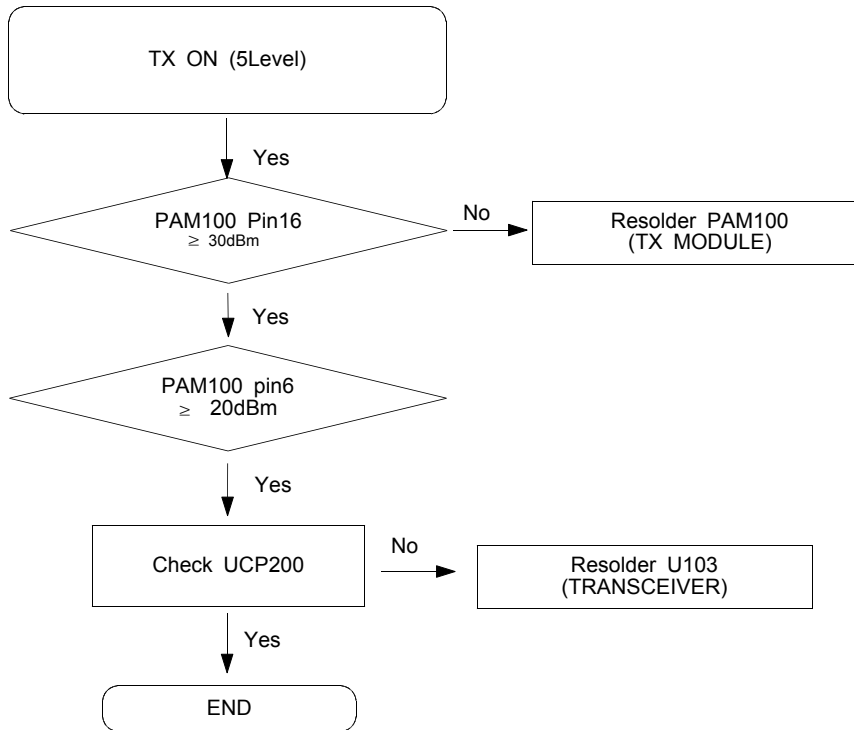


9-12. HIGH BAND Receiver -MASTER

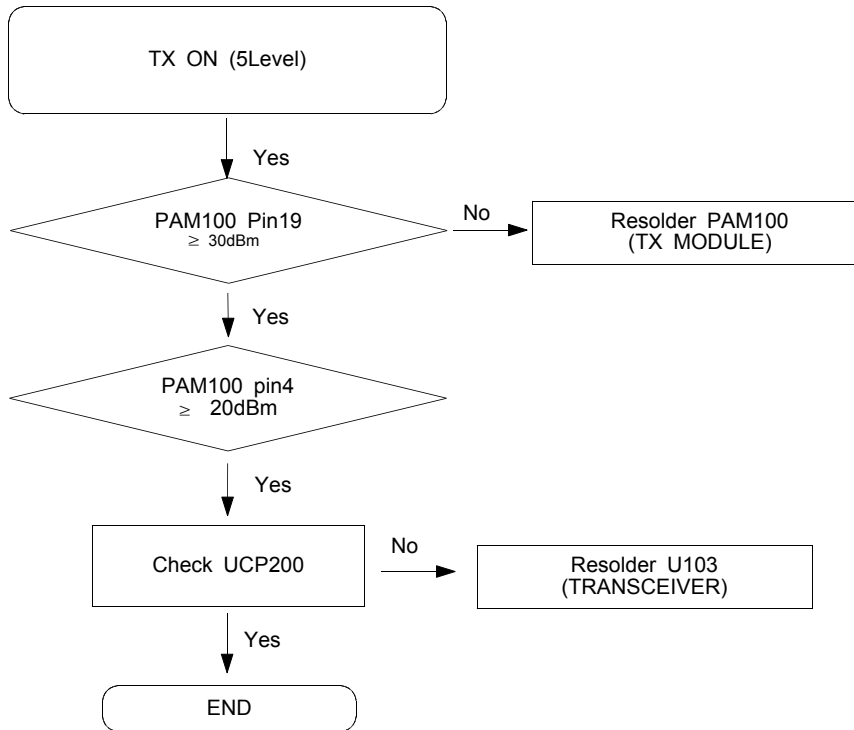


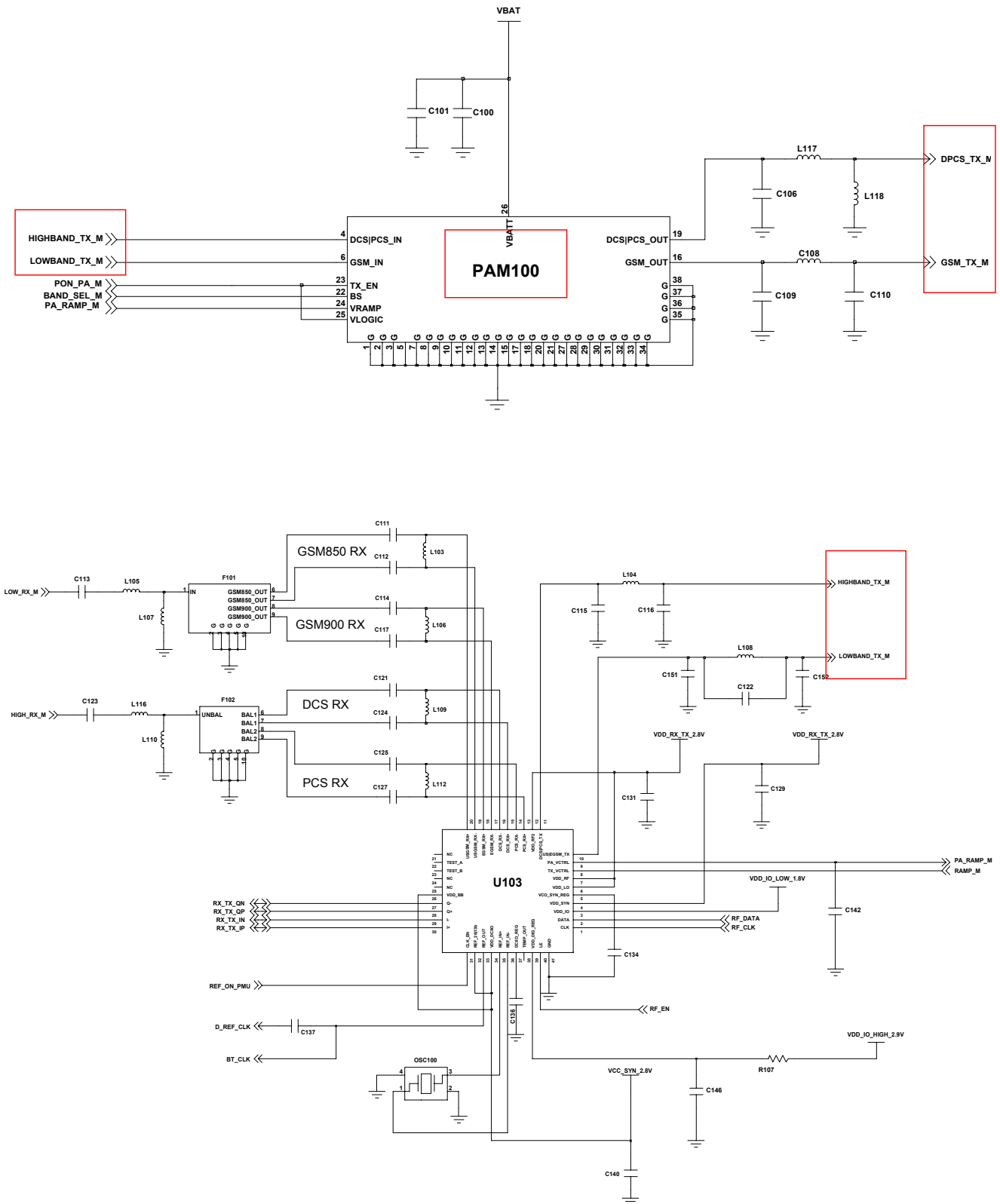


9-13. LOW BAND Transmitter -MASTER

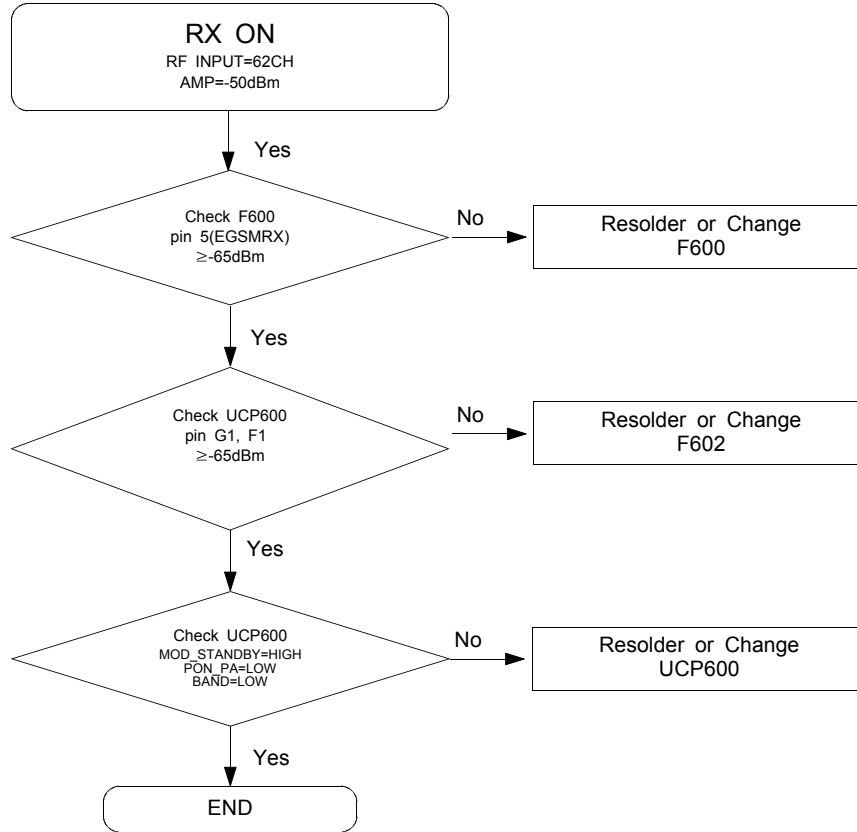


9-14. HIGH BAND Transmitter -MASTER

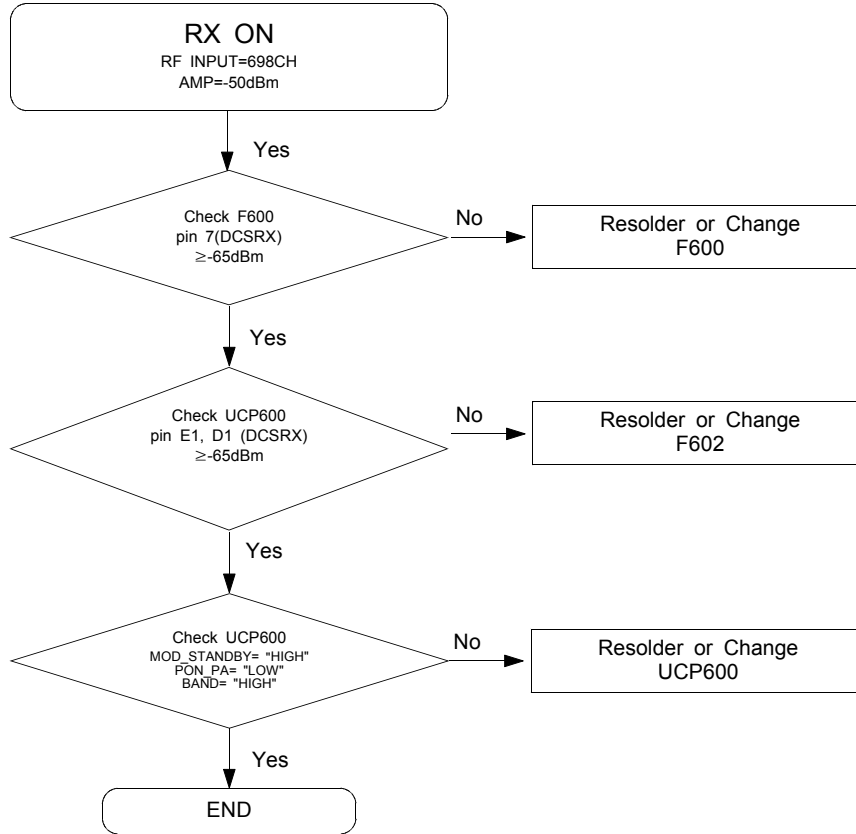




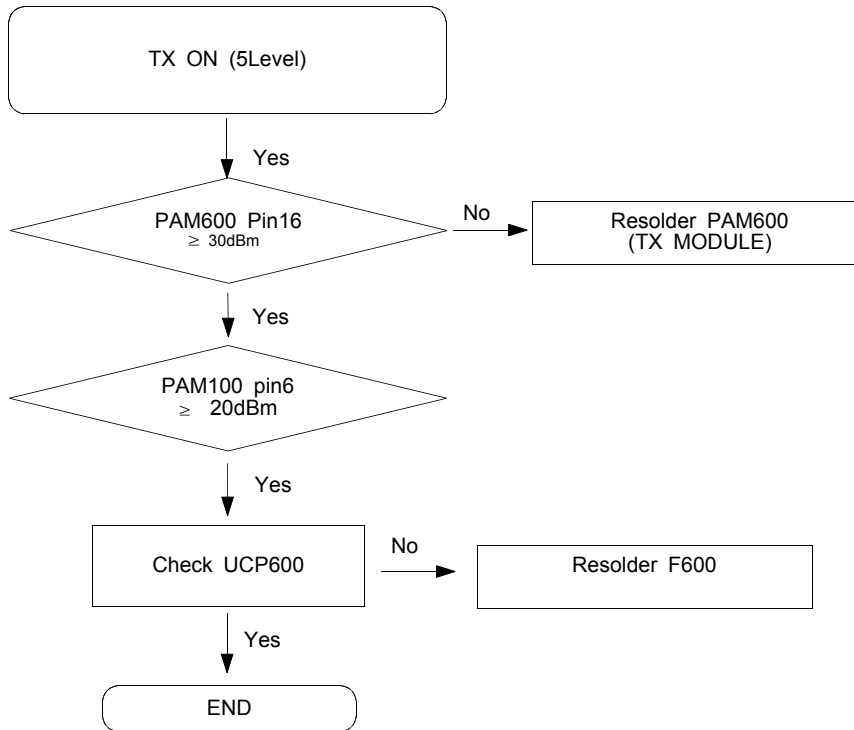
9-11. LOW BAND Receiver -Slave



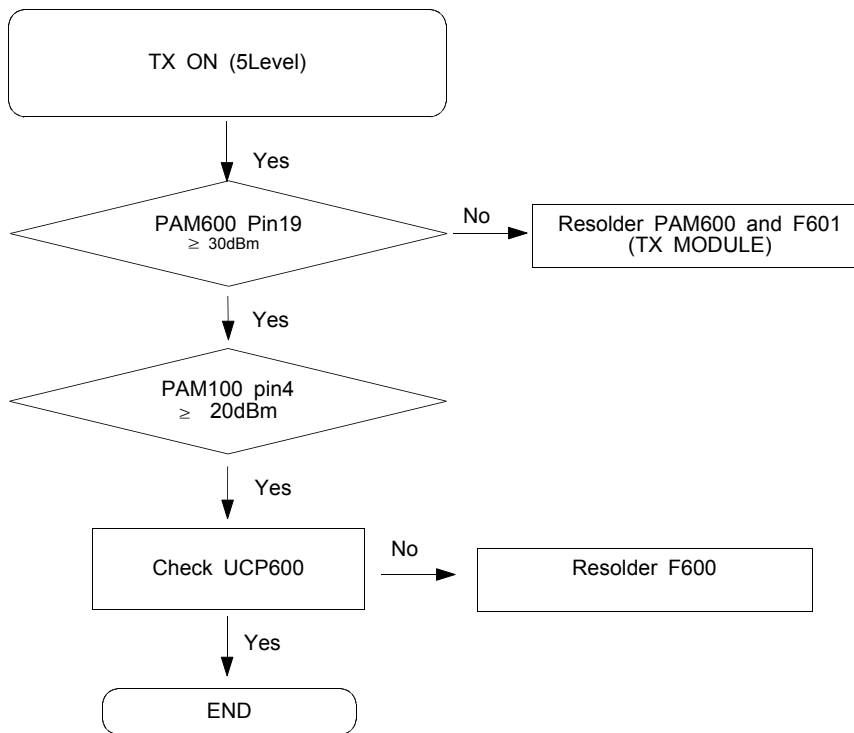
9-12. HIGH BAND Receiver -Slave

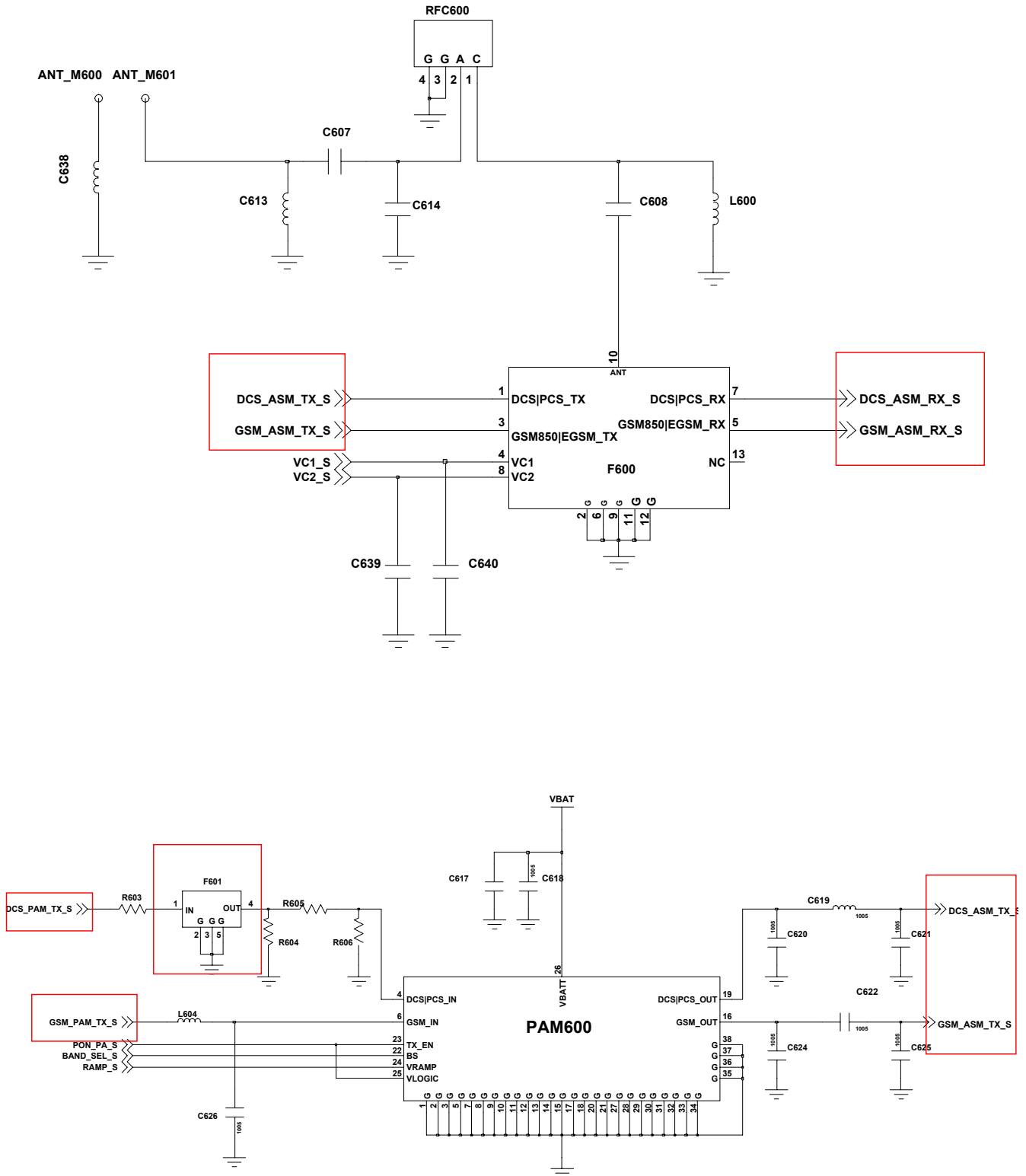


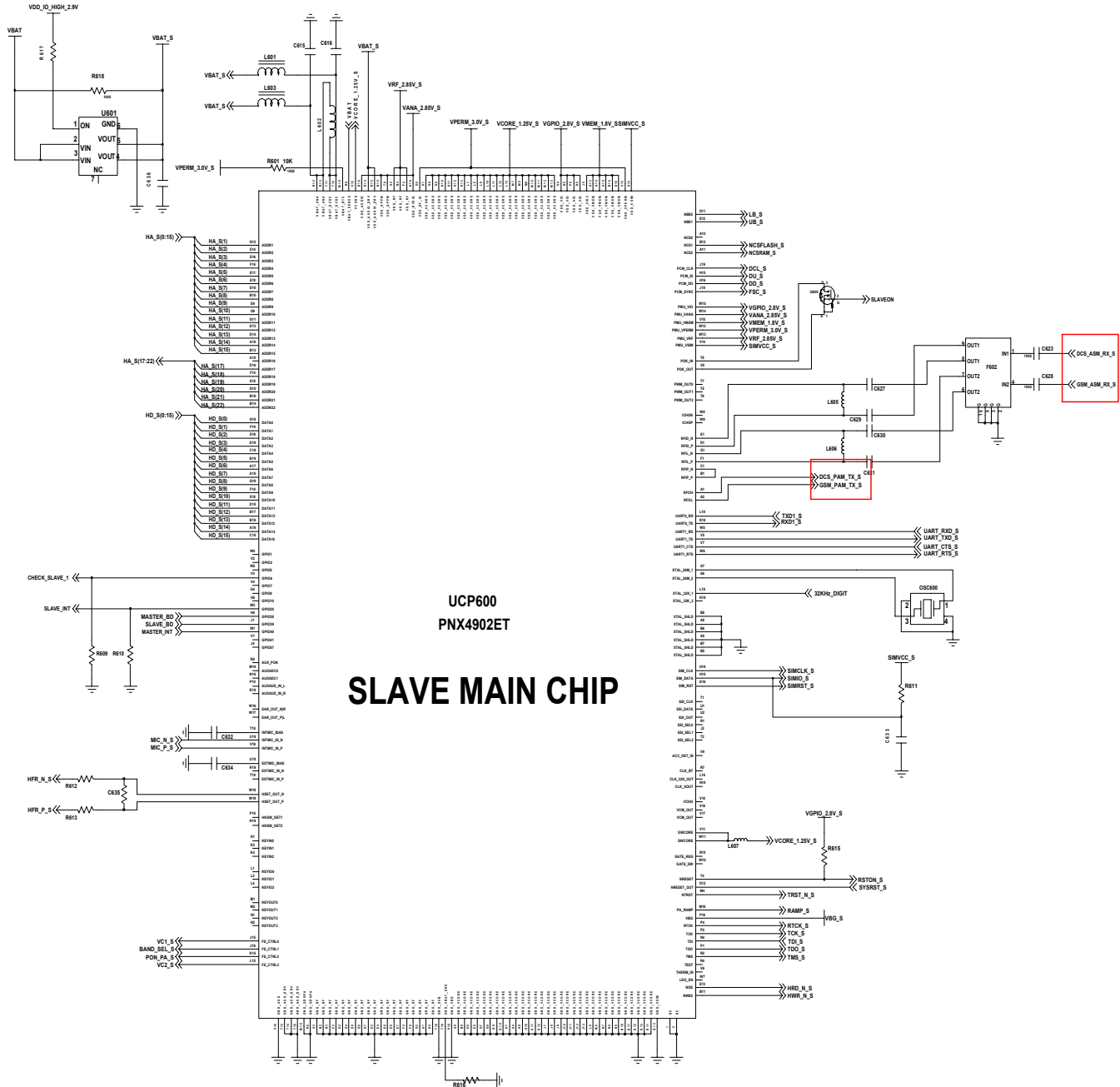
9-13. LOW BAND Transmitter -Slave



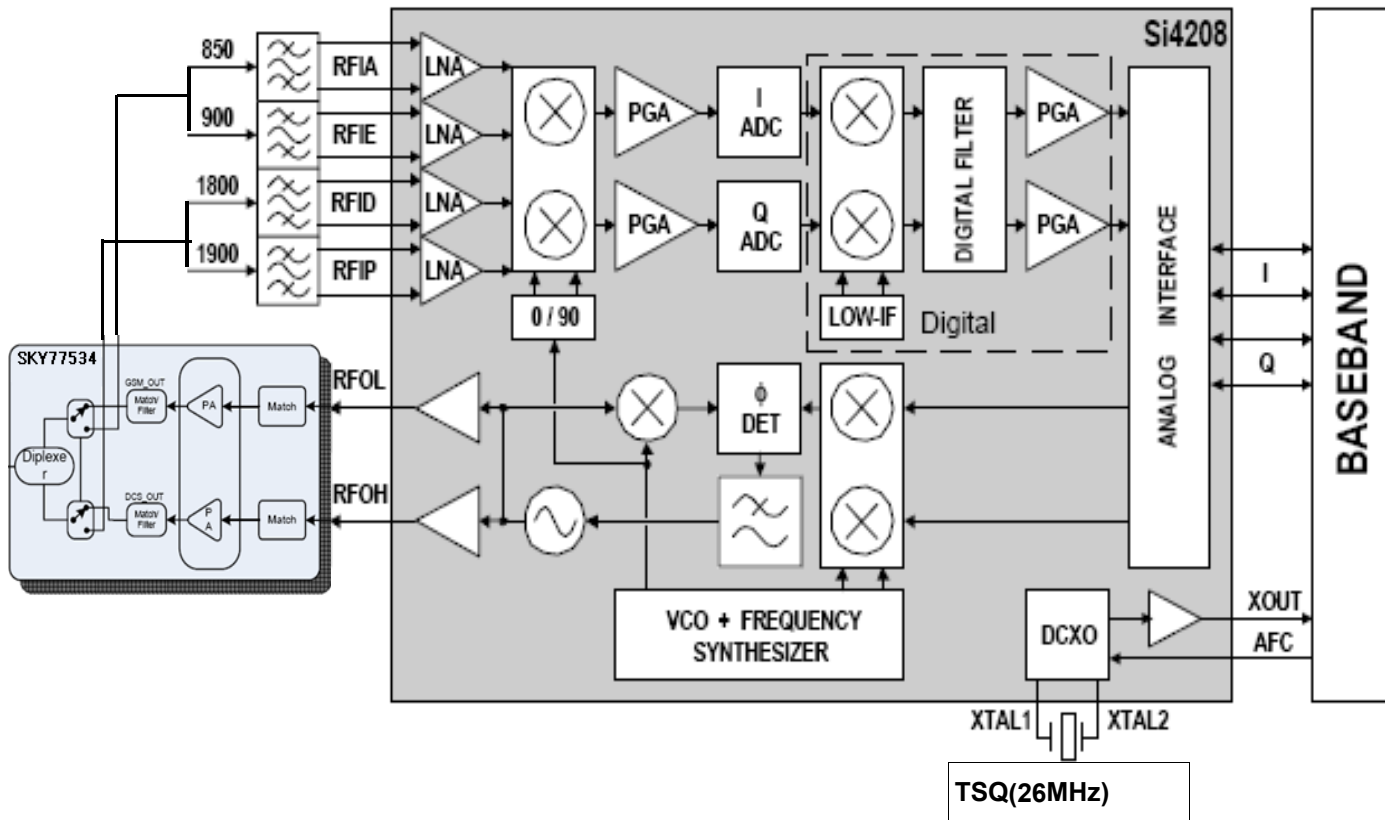
9-14. HIGH BAND Transmitter -Slave

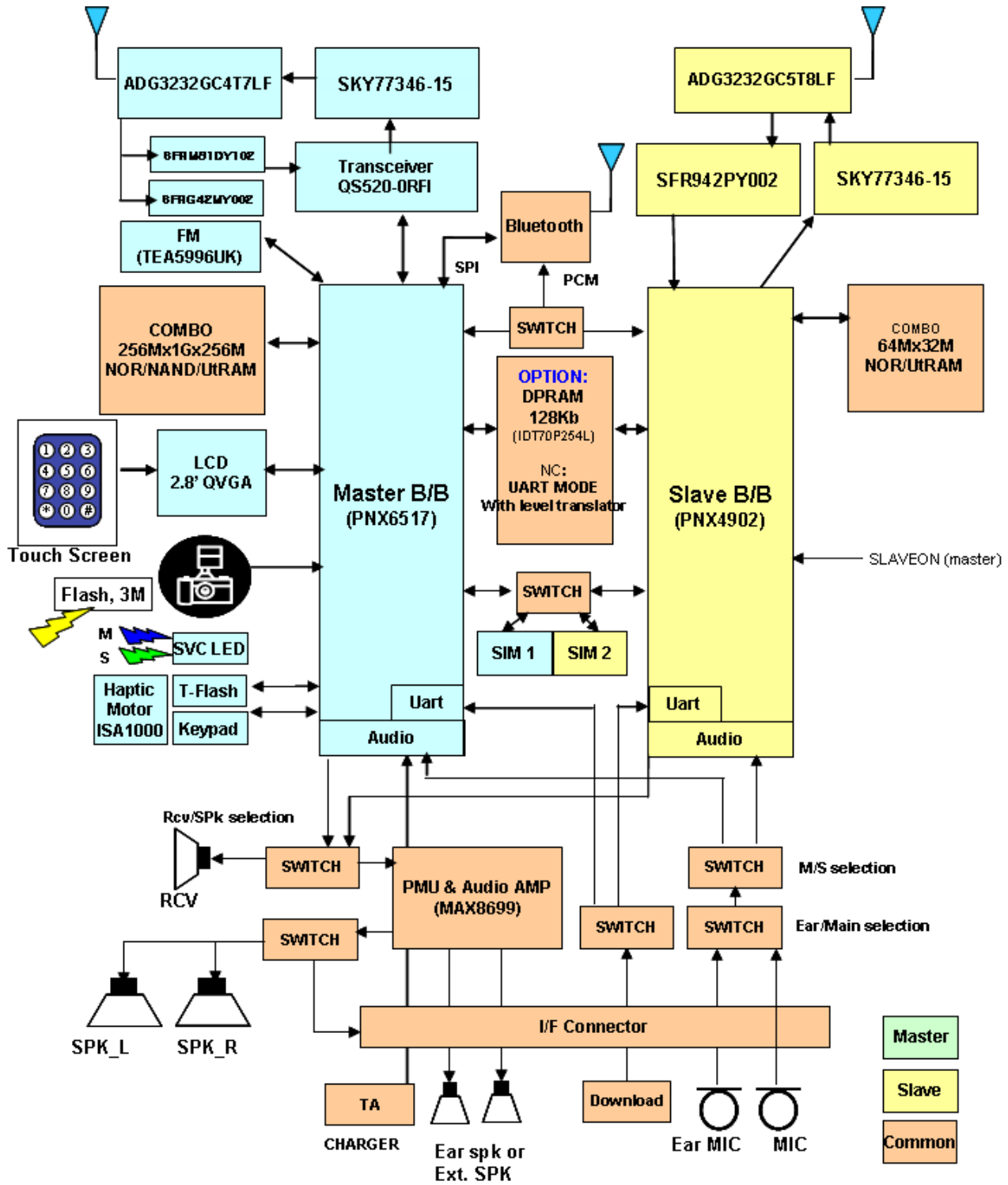


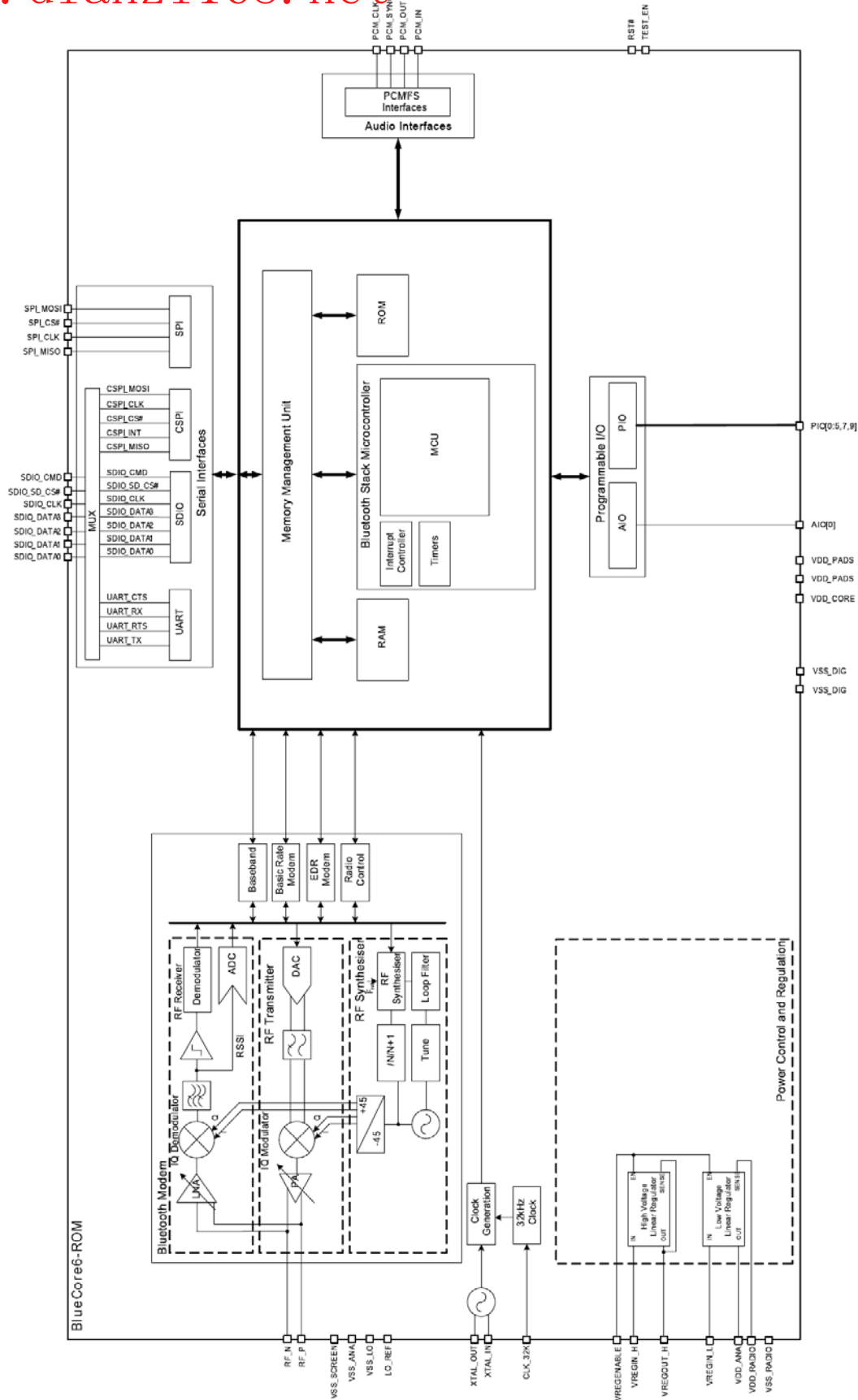




7. Block Diagrams







8. PCB Diagrams
www.dianzi168.net

8-1. Top

