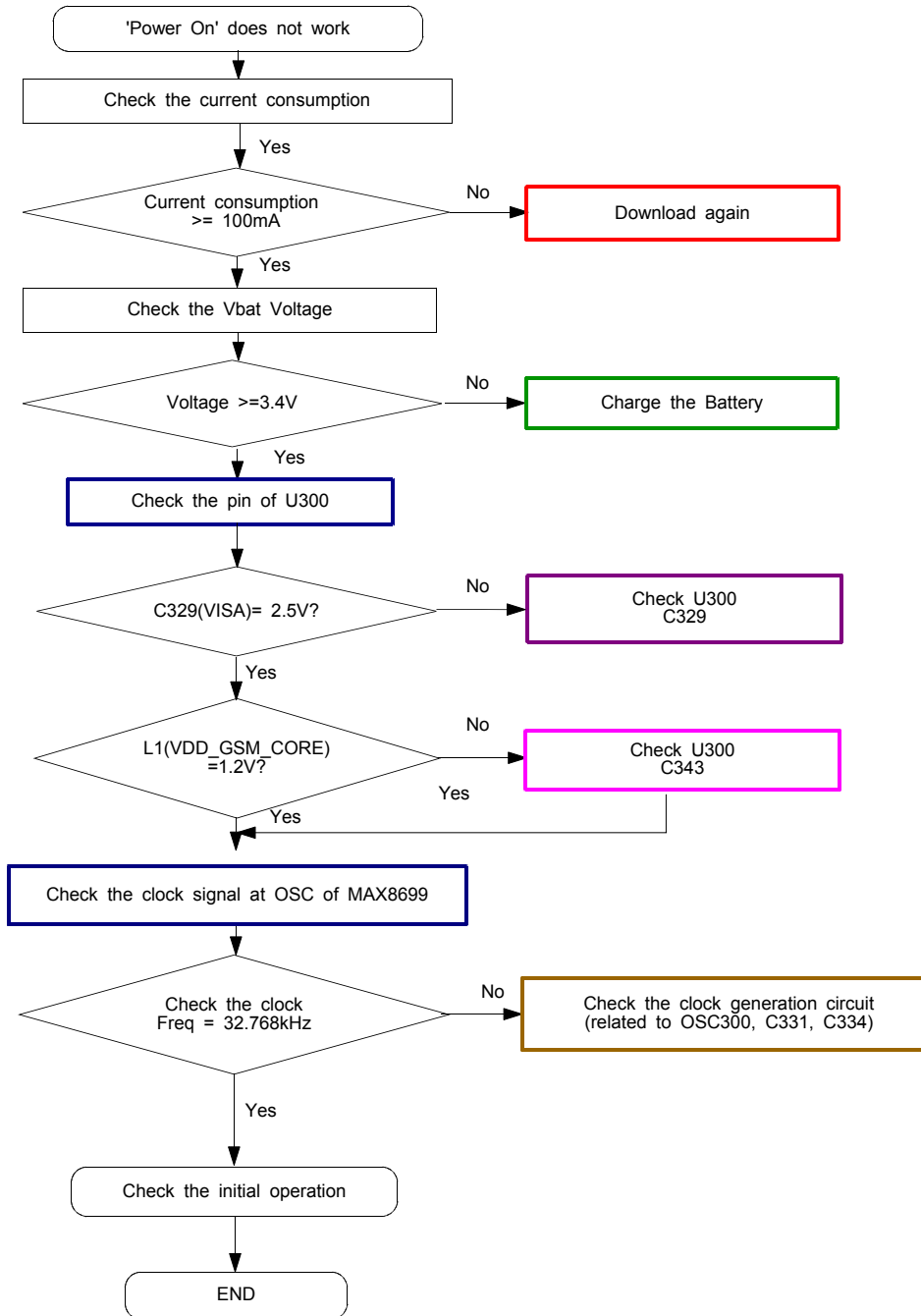
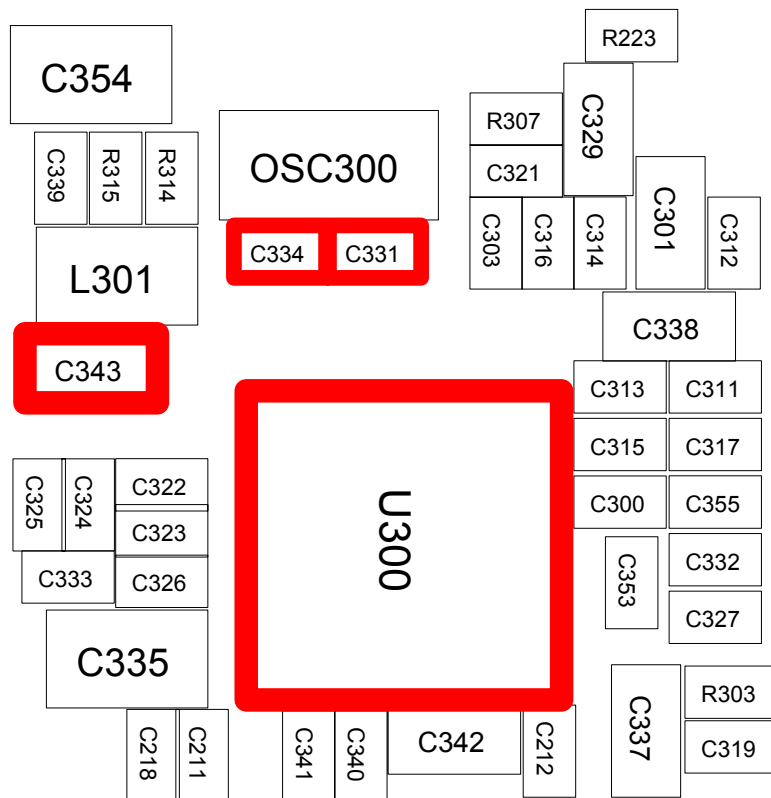
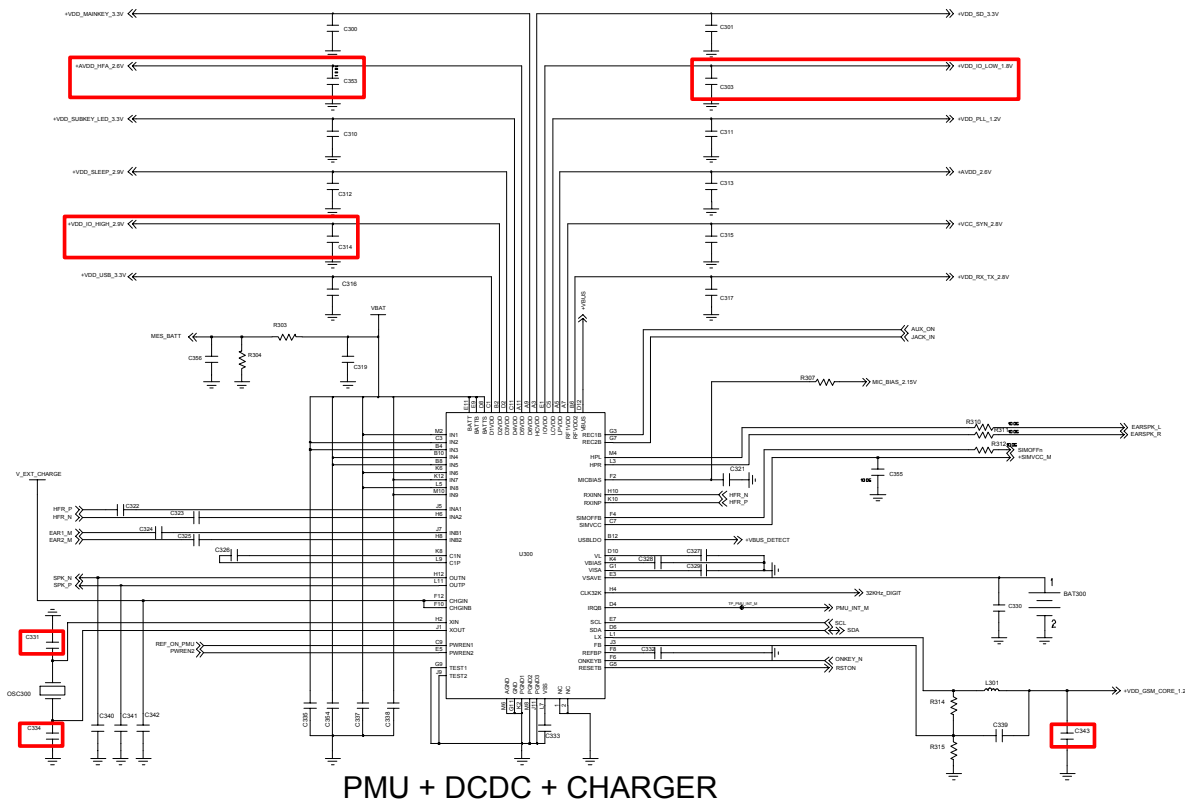


10. Flow Chart of Troubleshooting

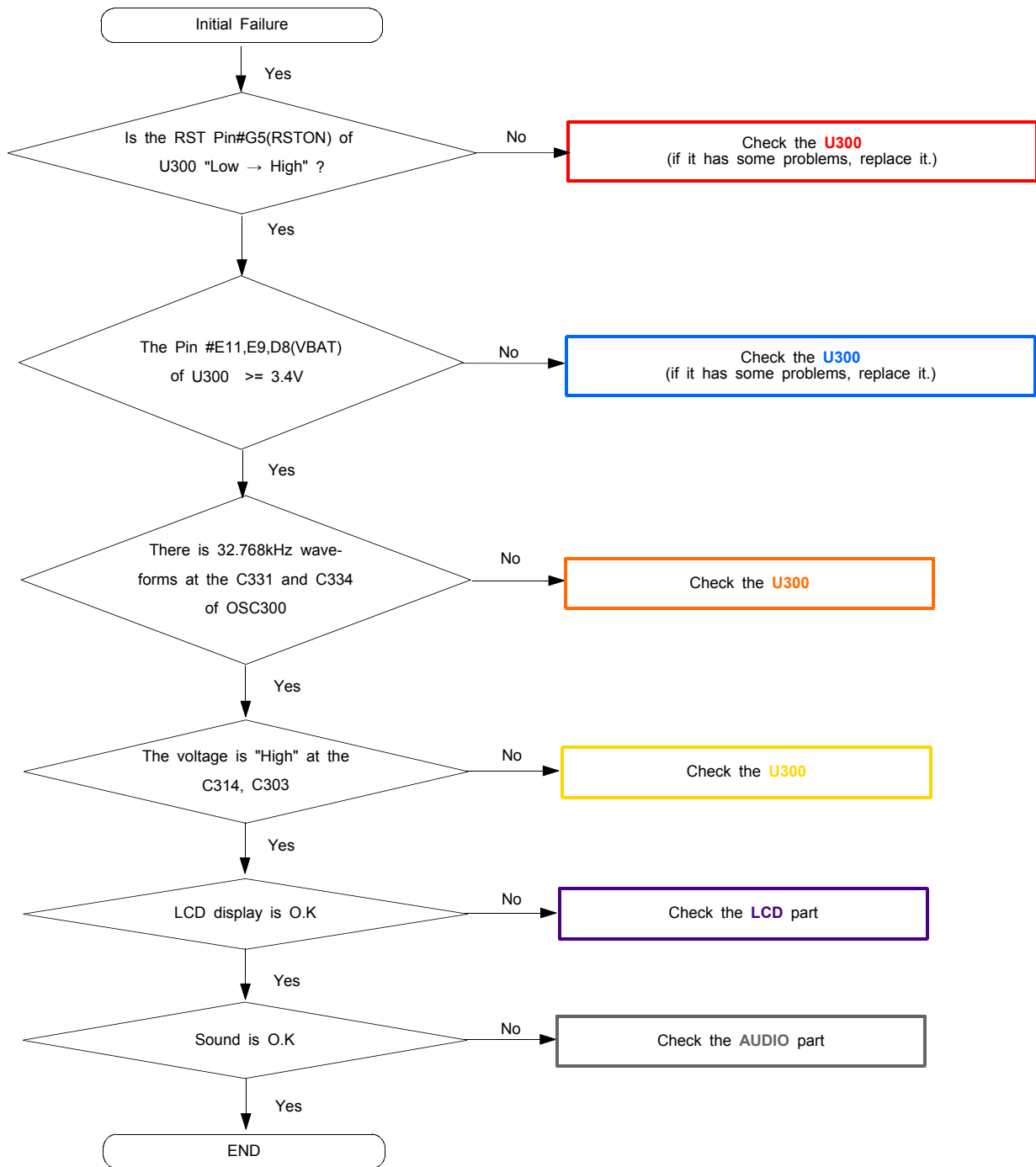
10-1.Baseband

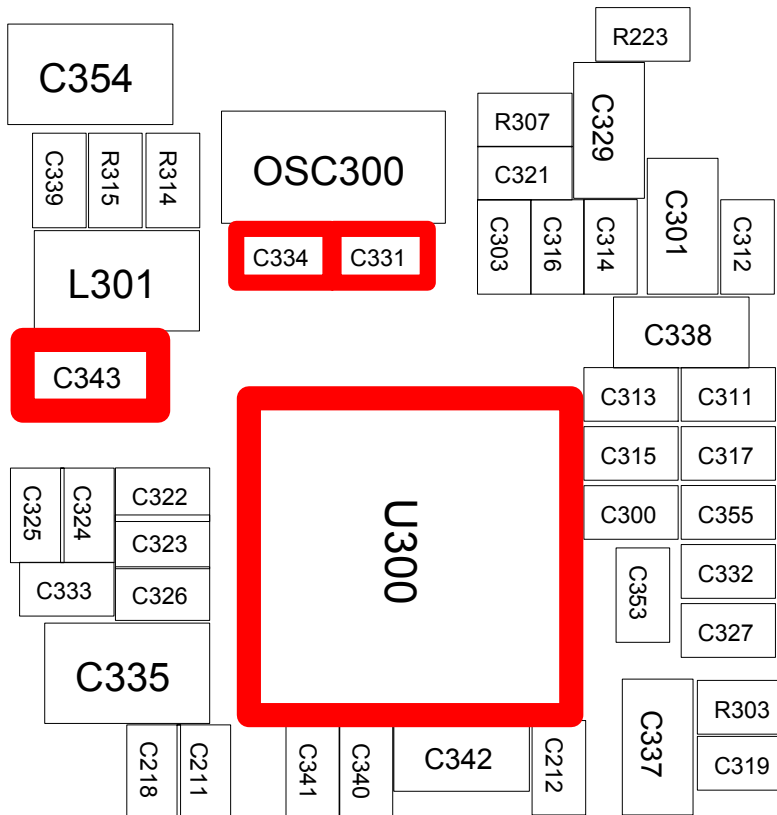
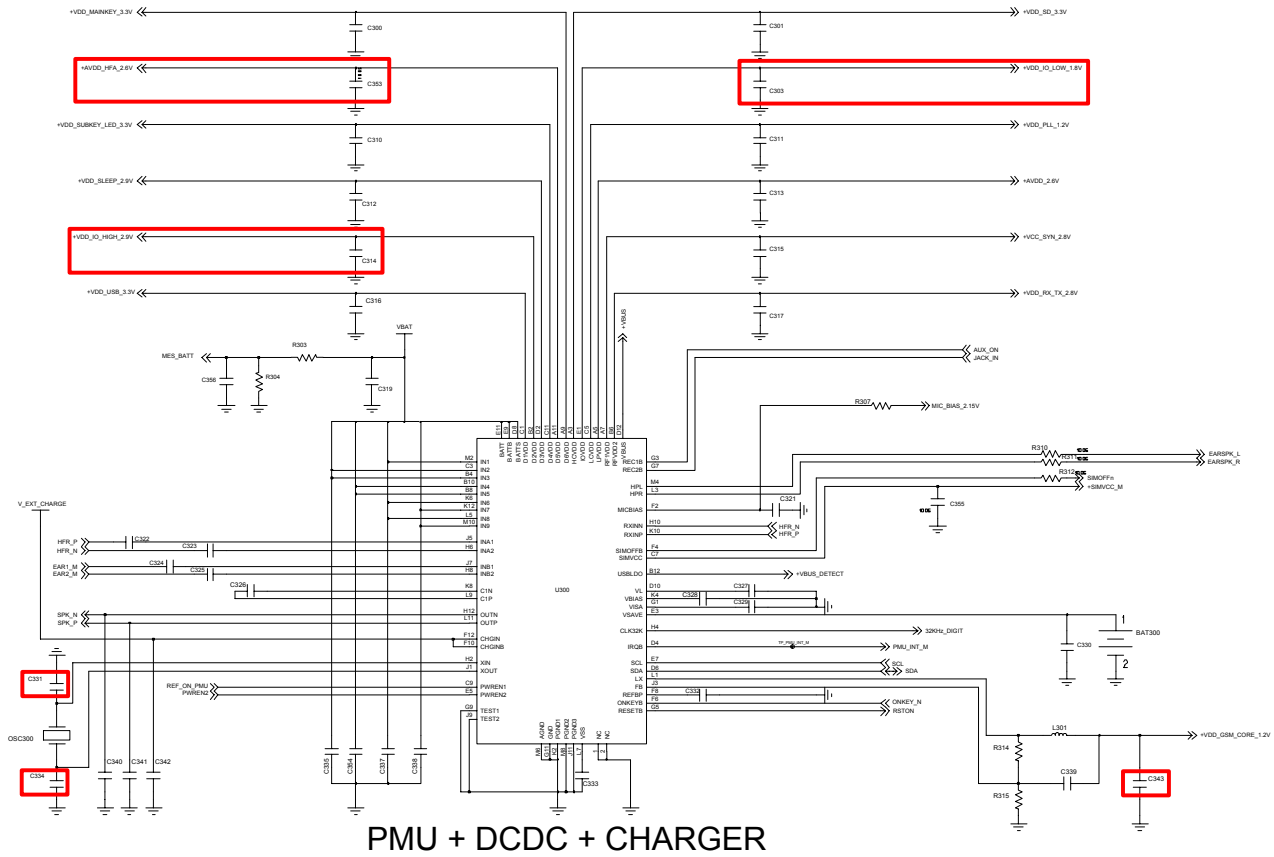
10-1-1. Power ON





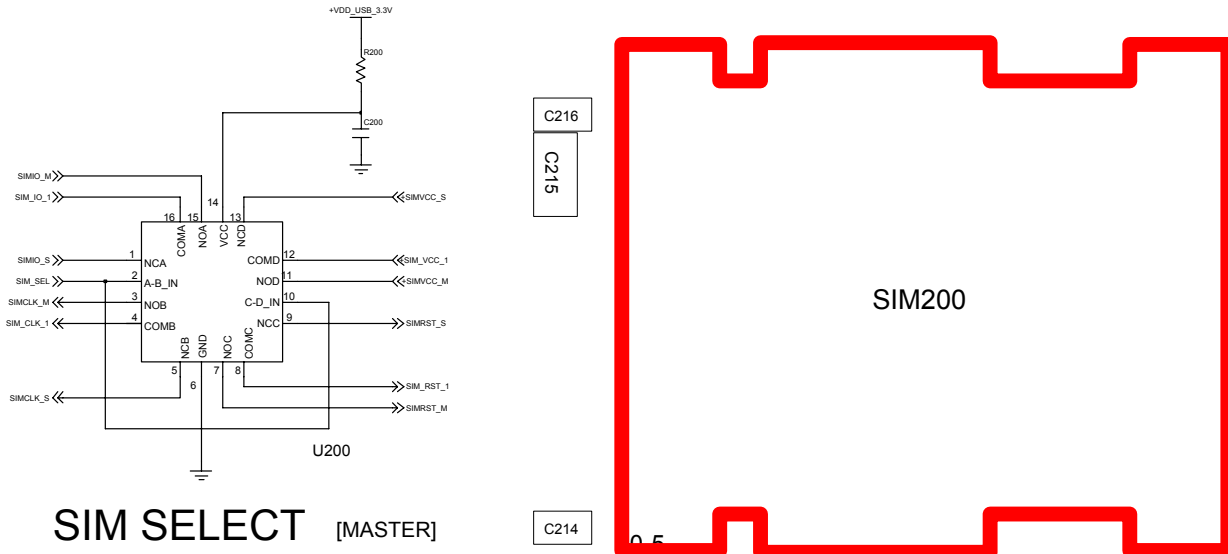
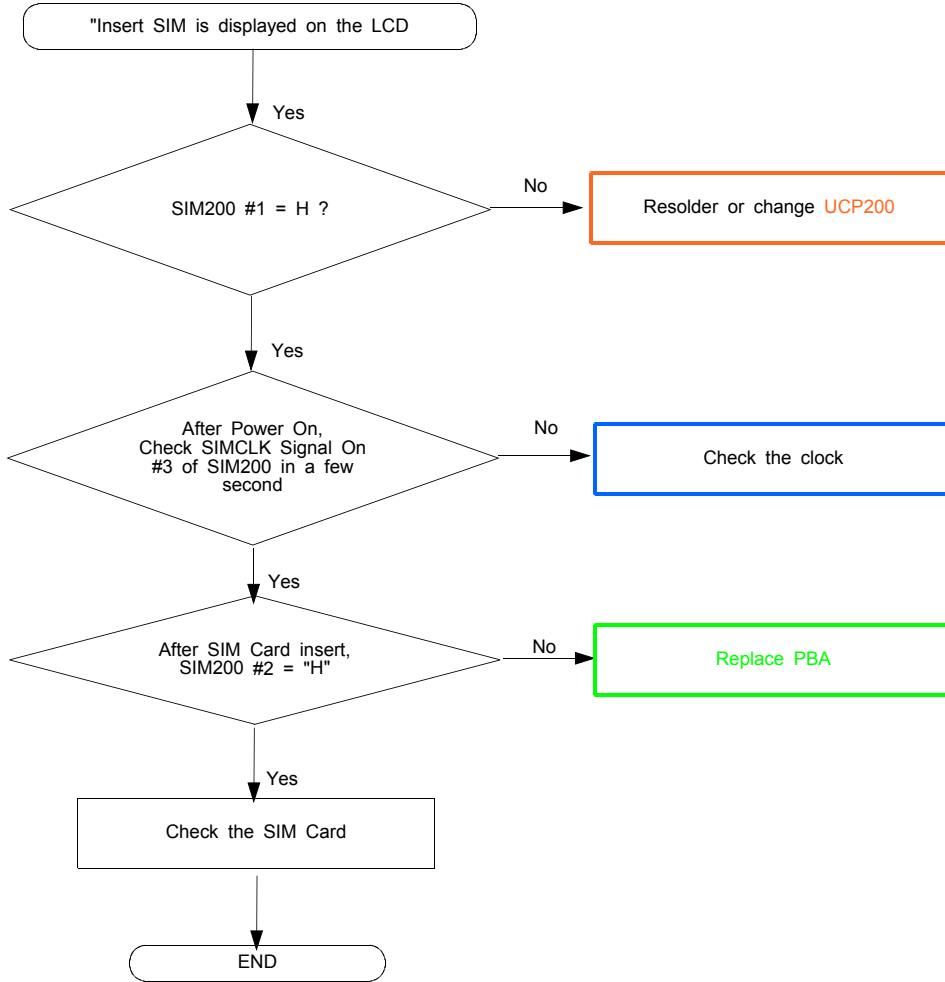
10-1-2. Initial



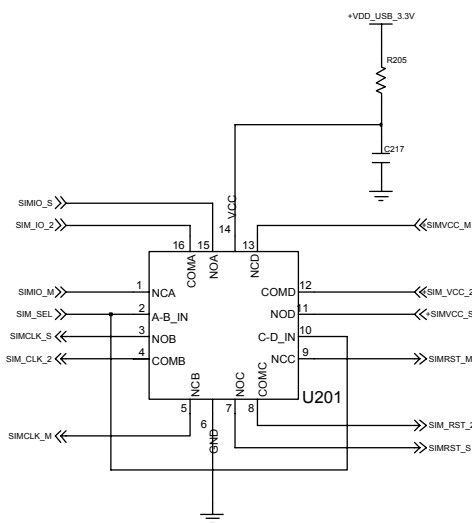
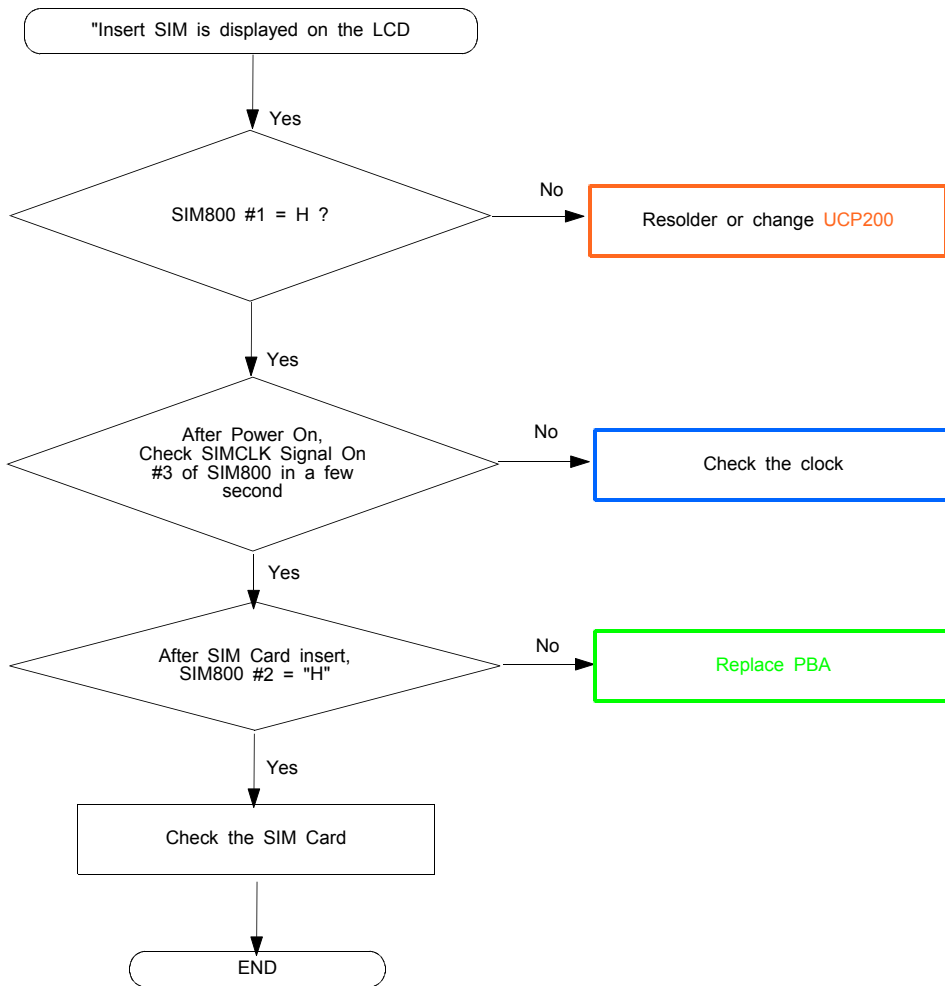


10-1-3. Sim Part

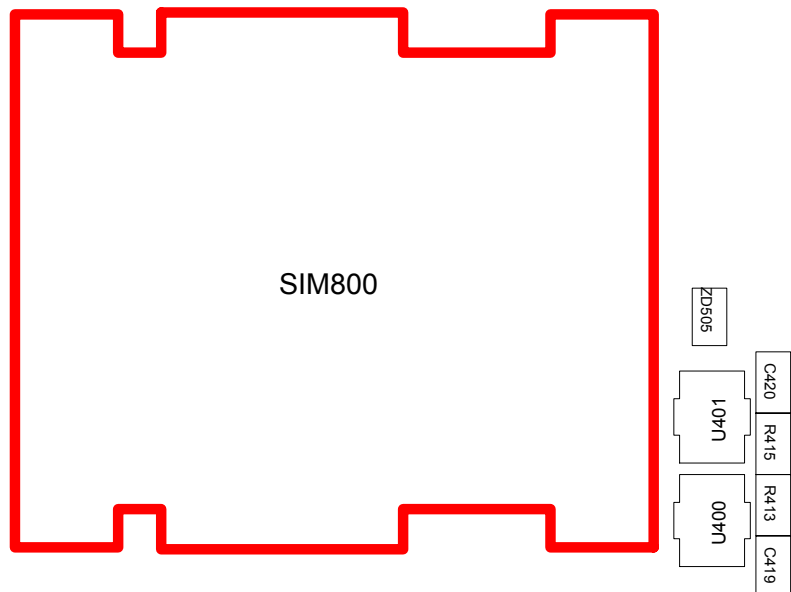
(1) MASTER



(2) SLAVE

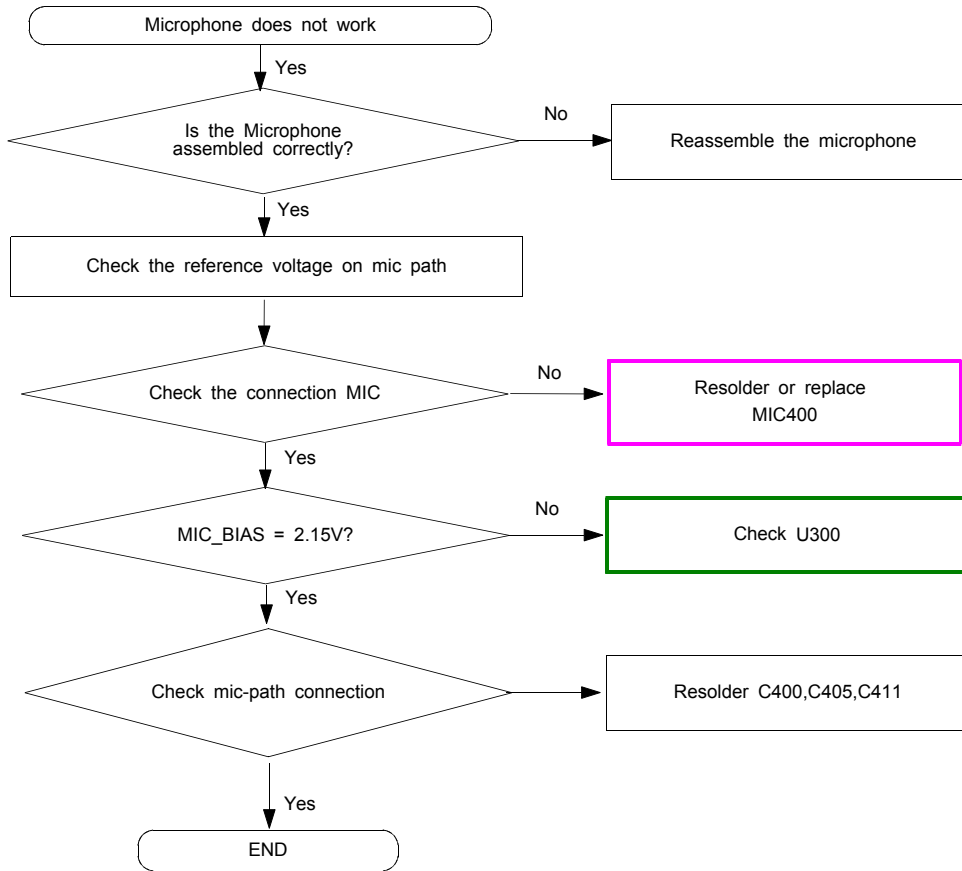


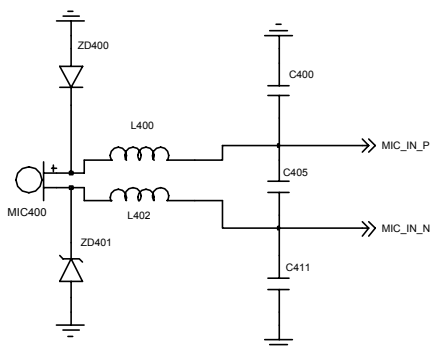
SIM SELECT [SLAVE]



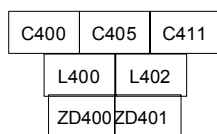
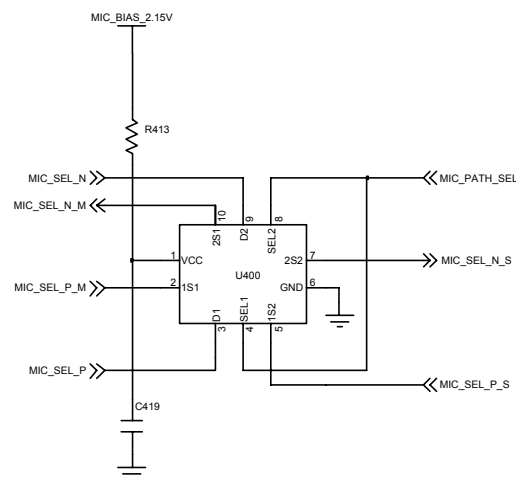
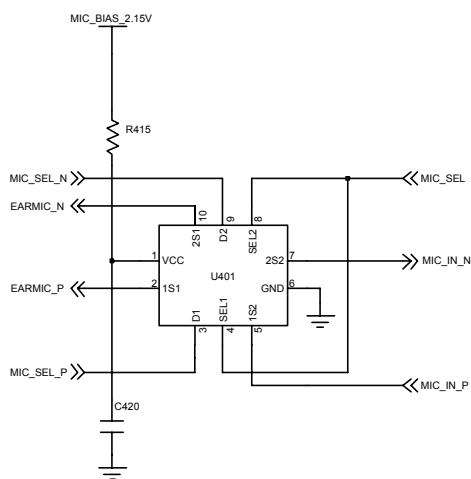
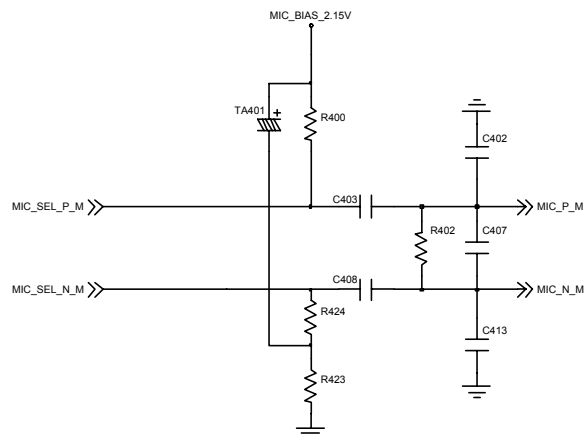
www.dianzi168.net

10-1-4. Microphone Part

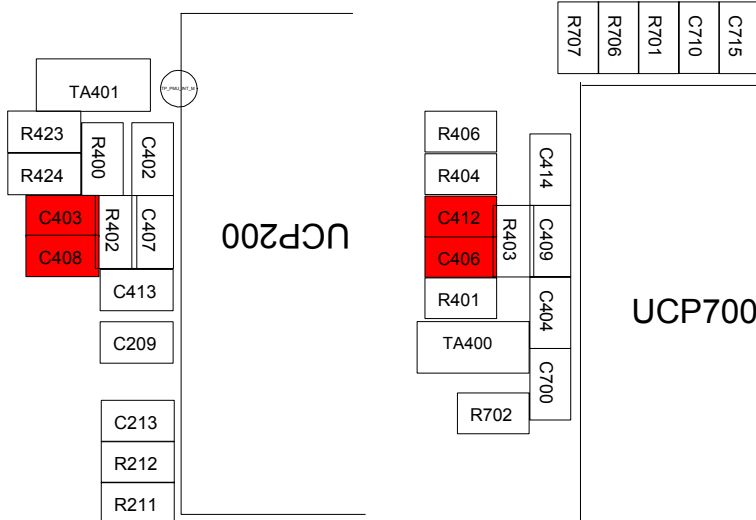




MICROPHONE



MIC400

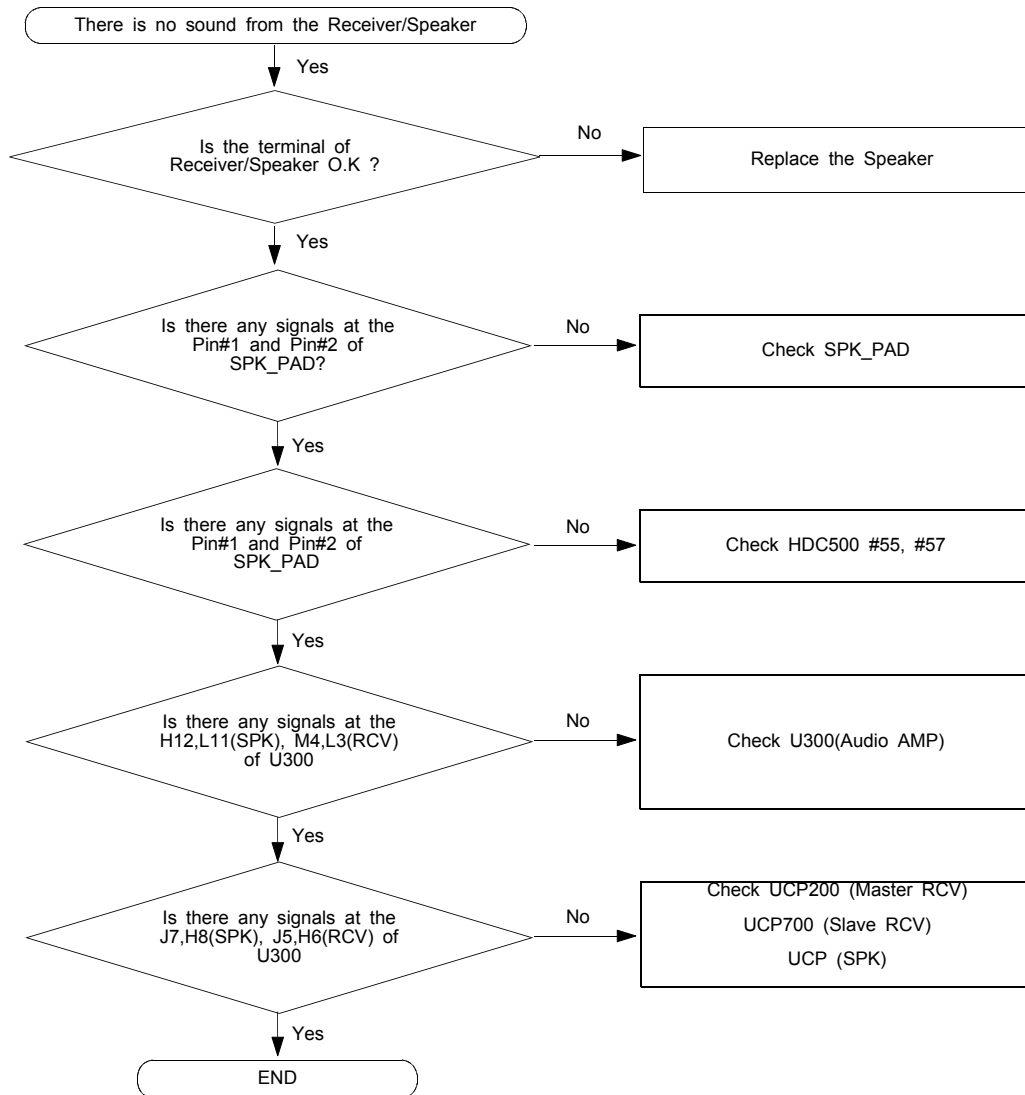


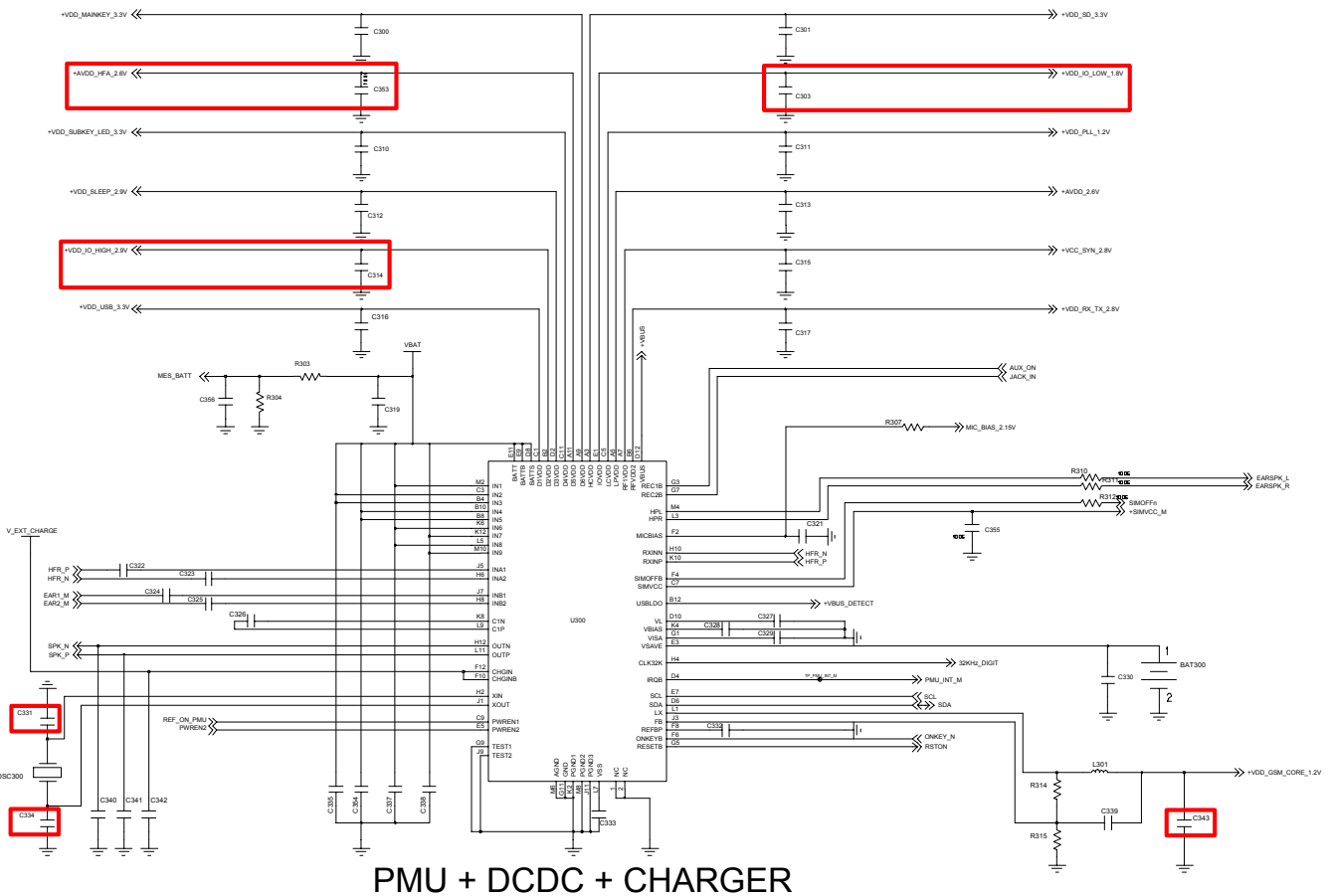
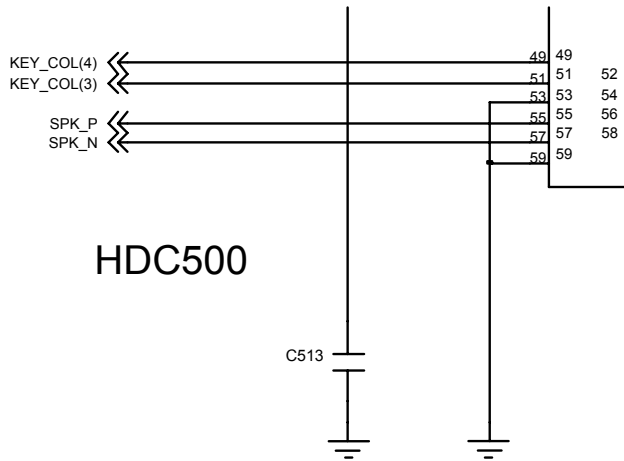
Master MIC path

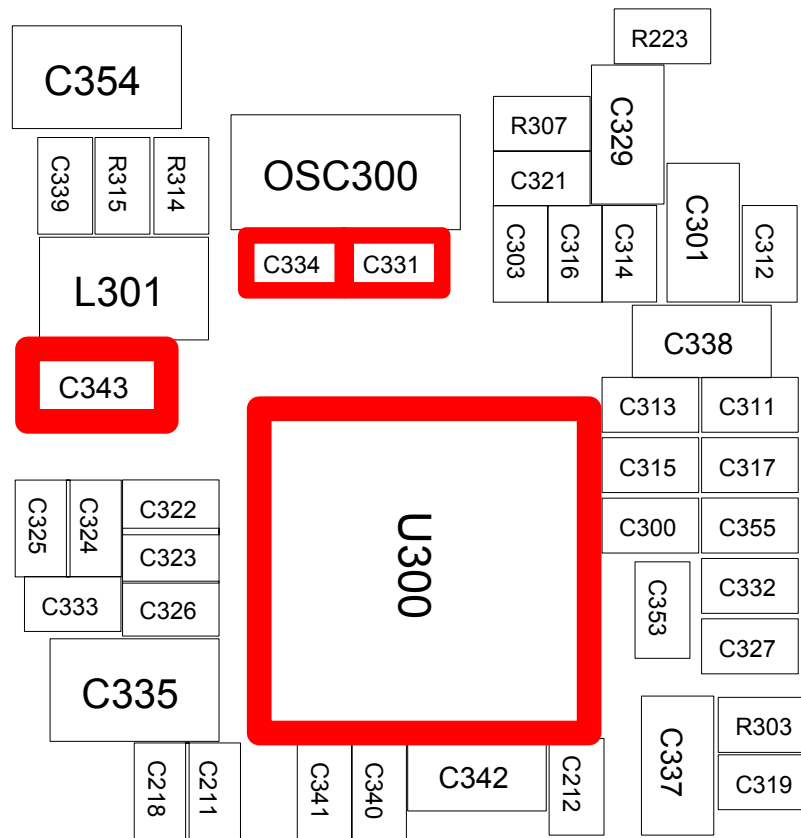
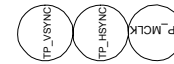
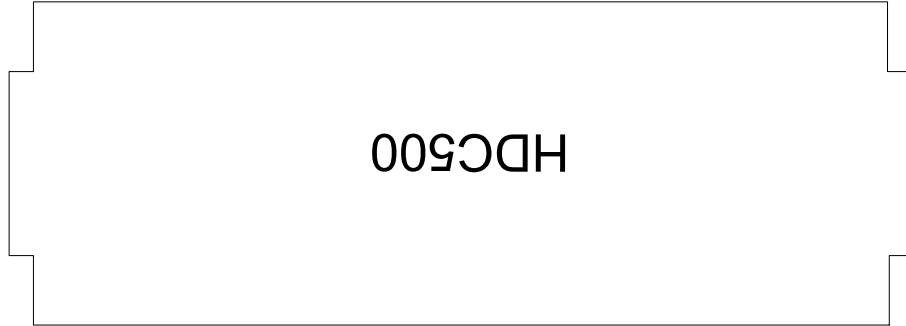
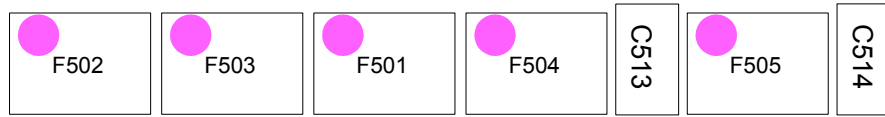
Slave MIC path

www.dianzi168.net

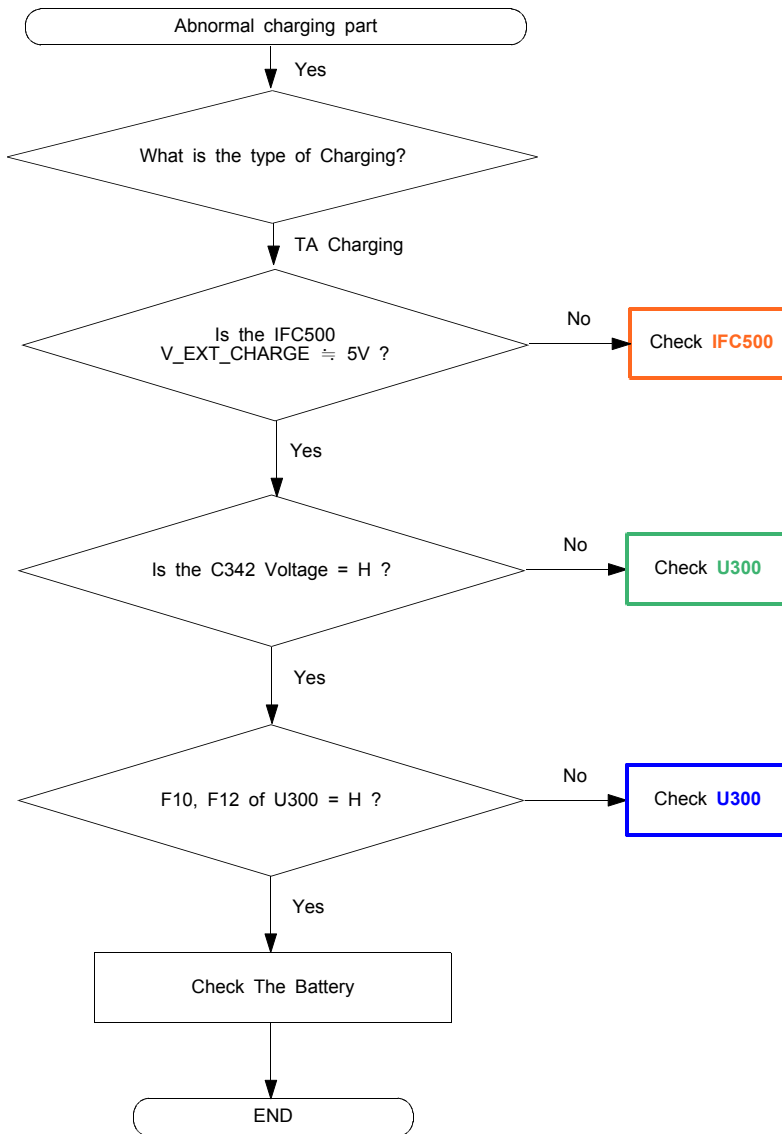
10-1-5. Receiver/Speaker Part



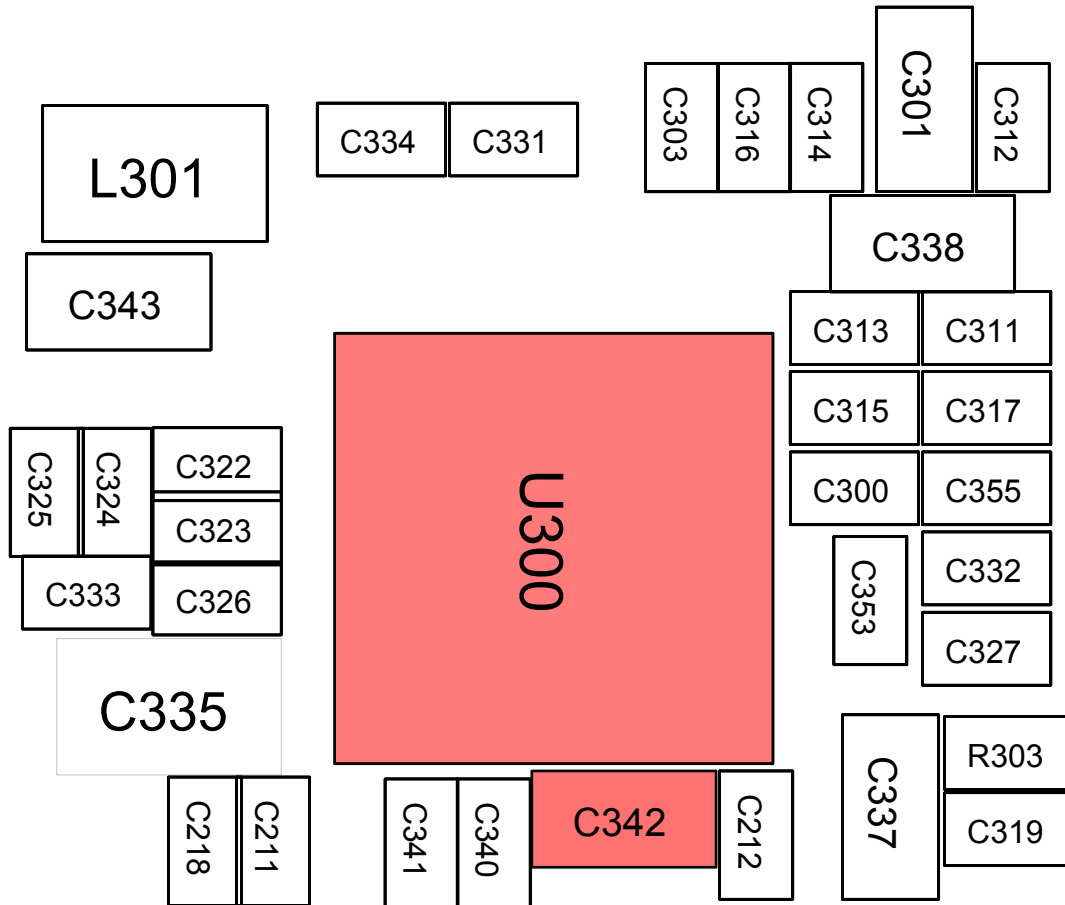
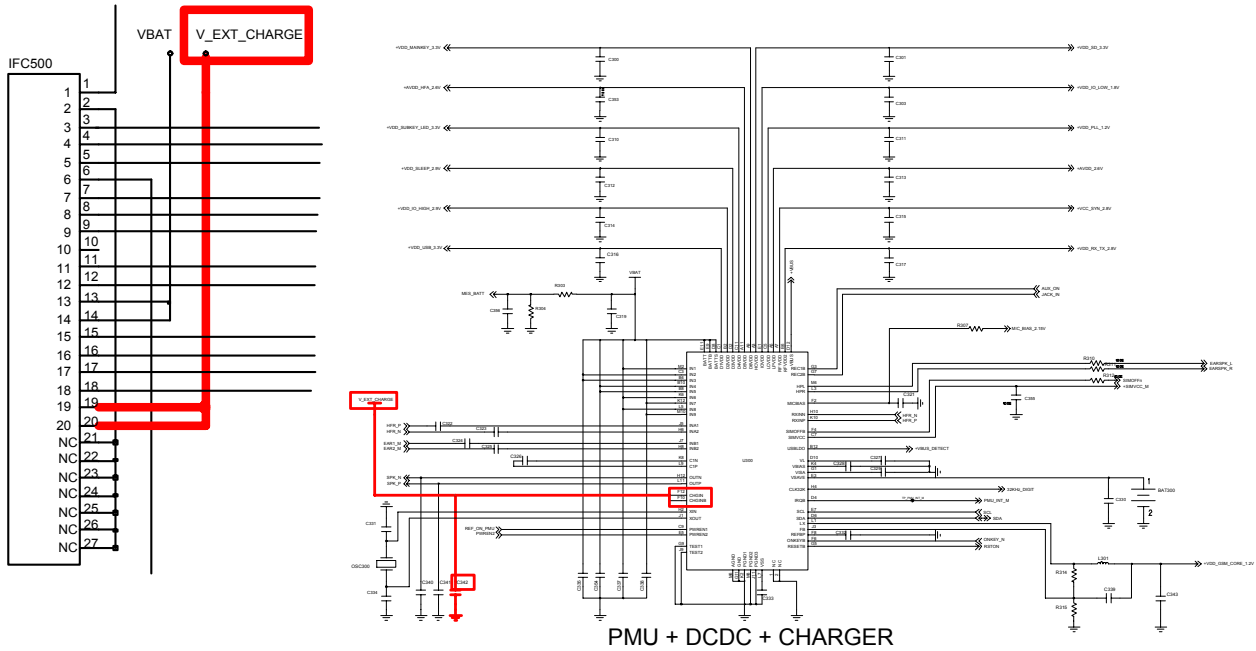




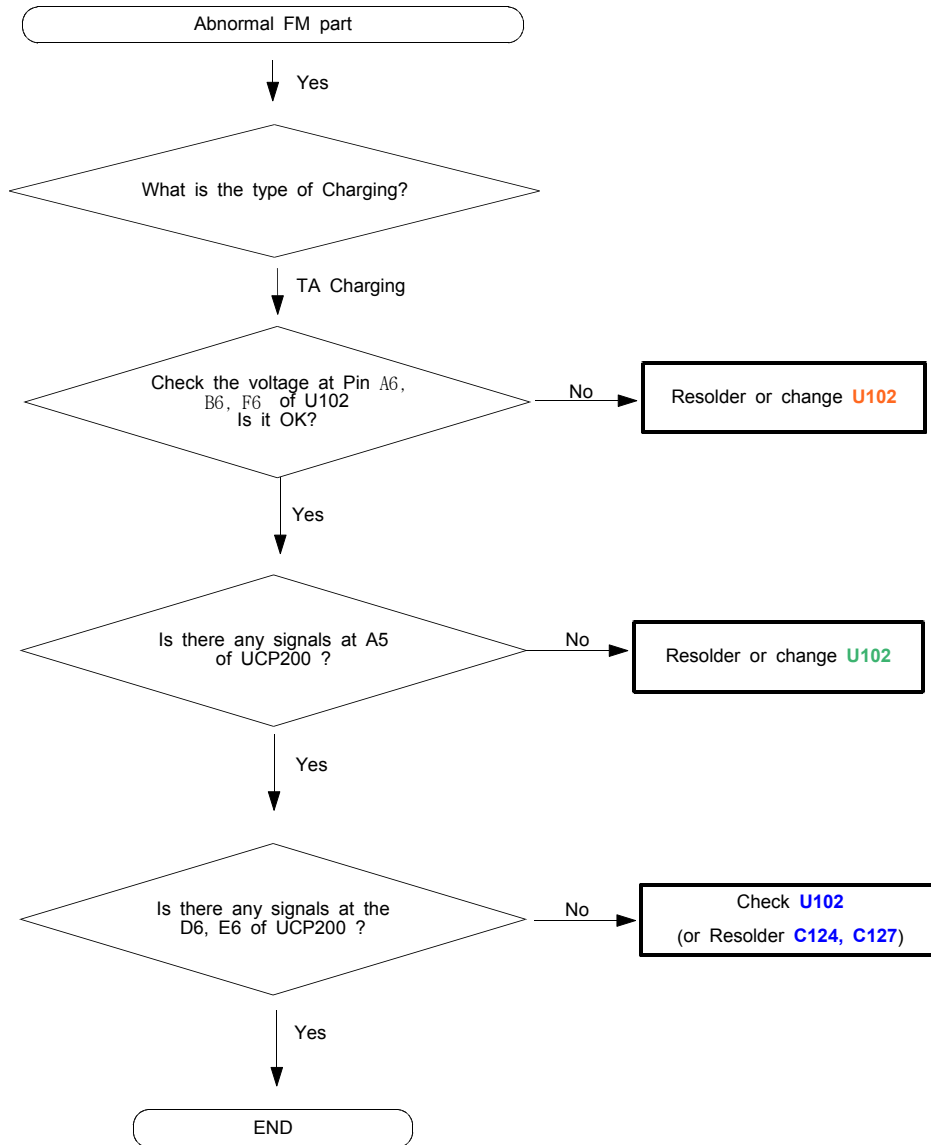
10-1-6. Charging Part

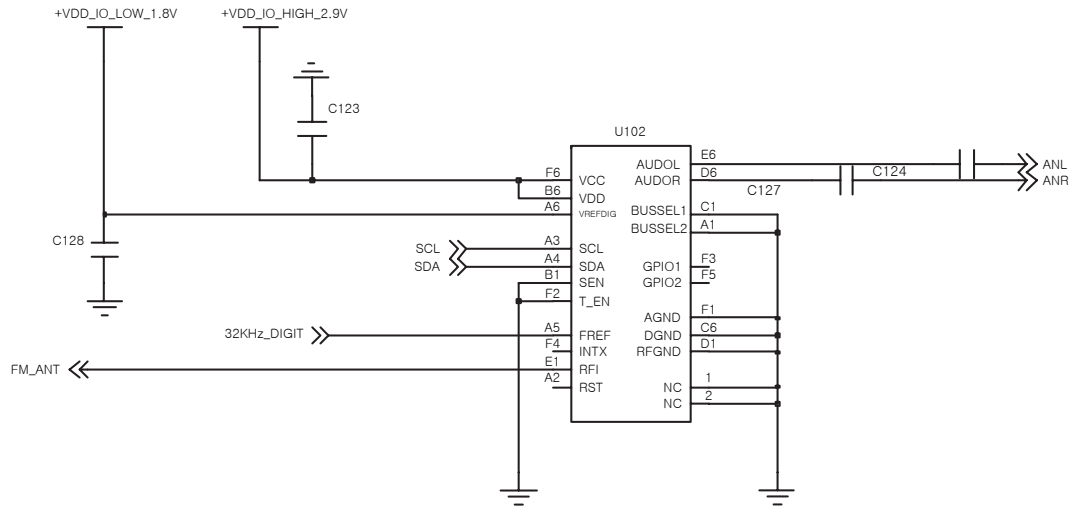


www.dianzi168.net

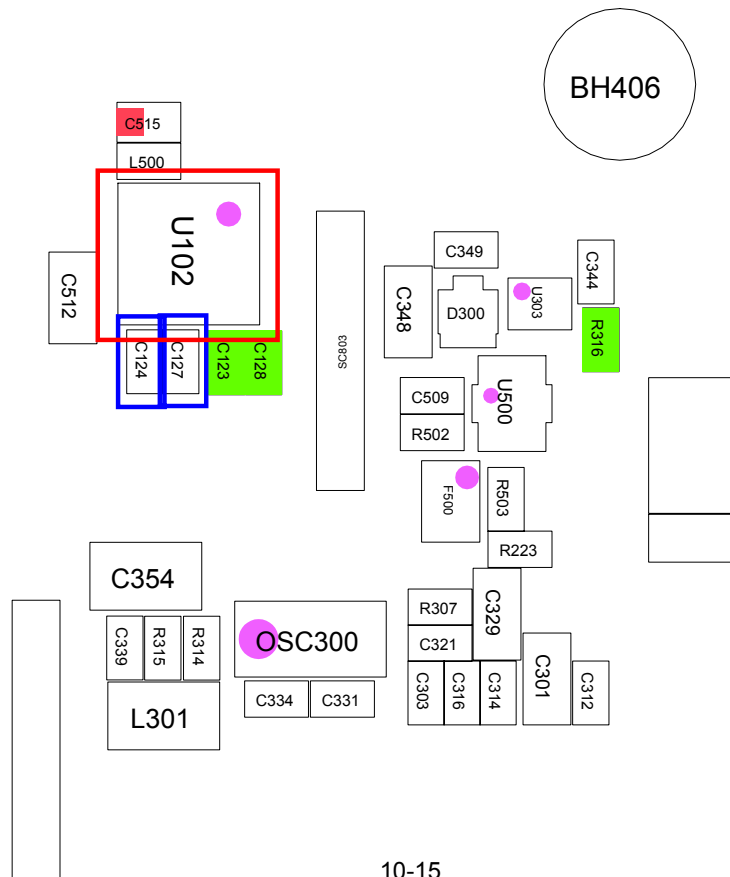


10-1-7. FM Receiver part



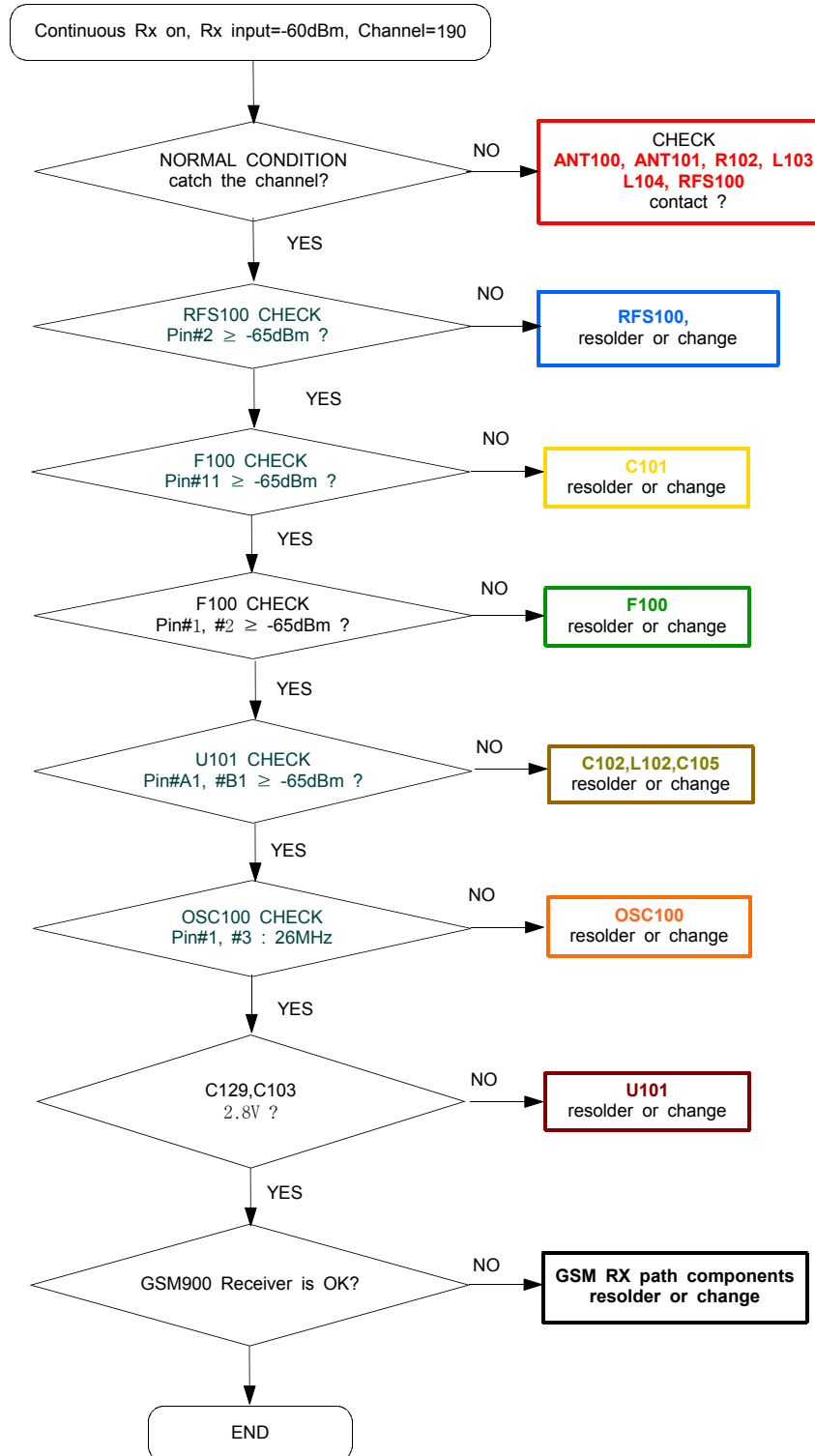


FM RADIO

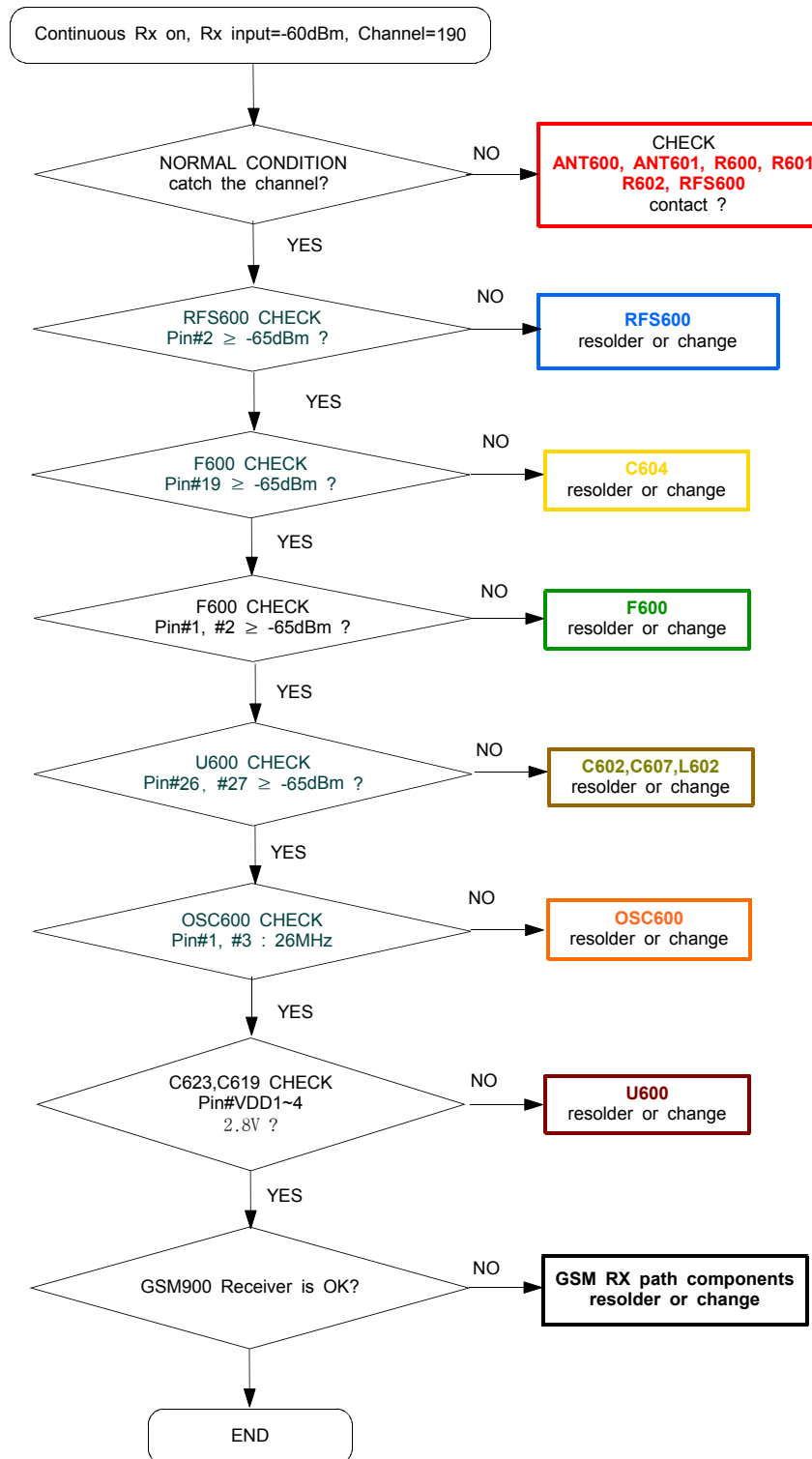


10-2. RF

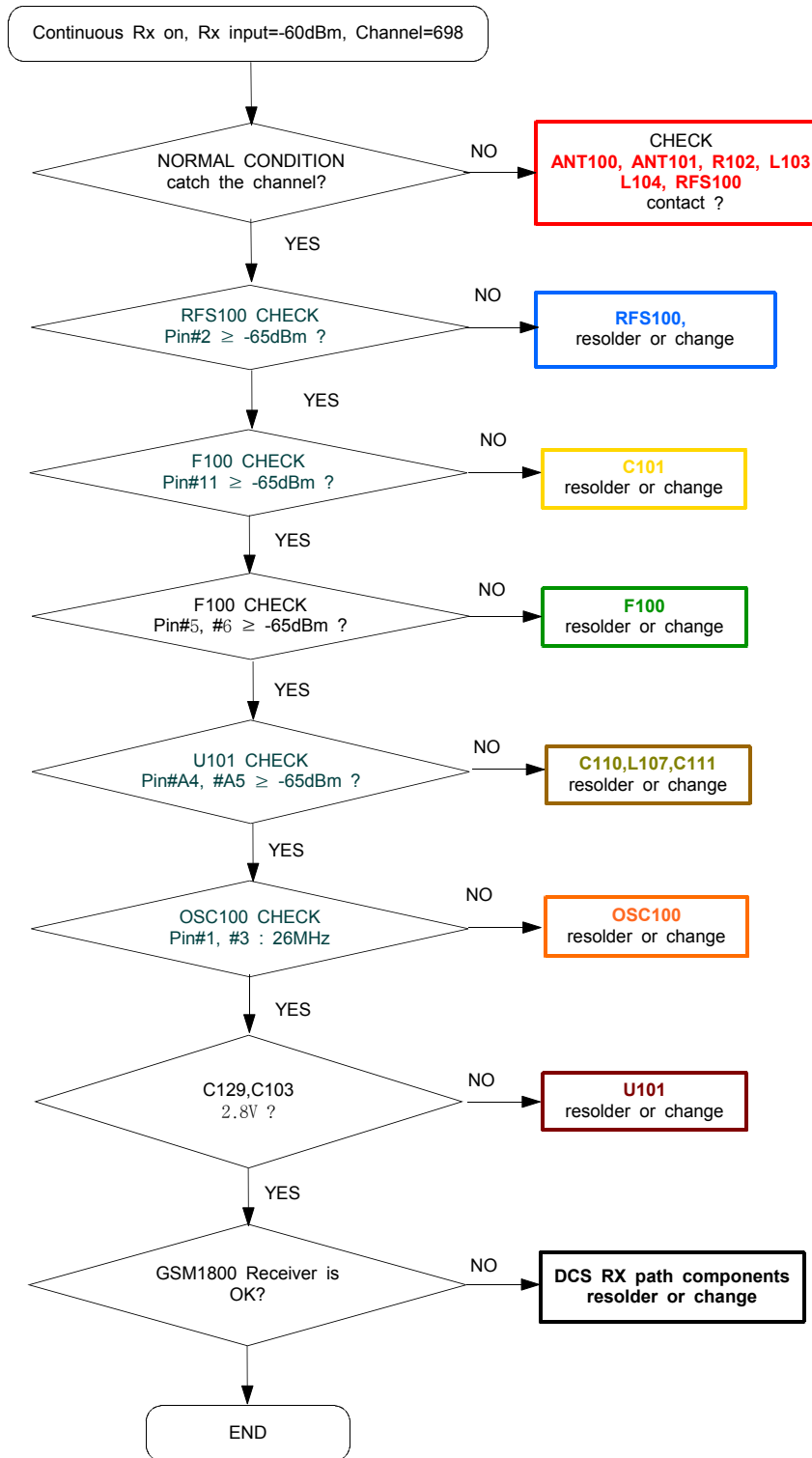
10-2-1. GSM RX- MASTER



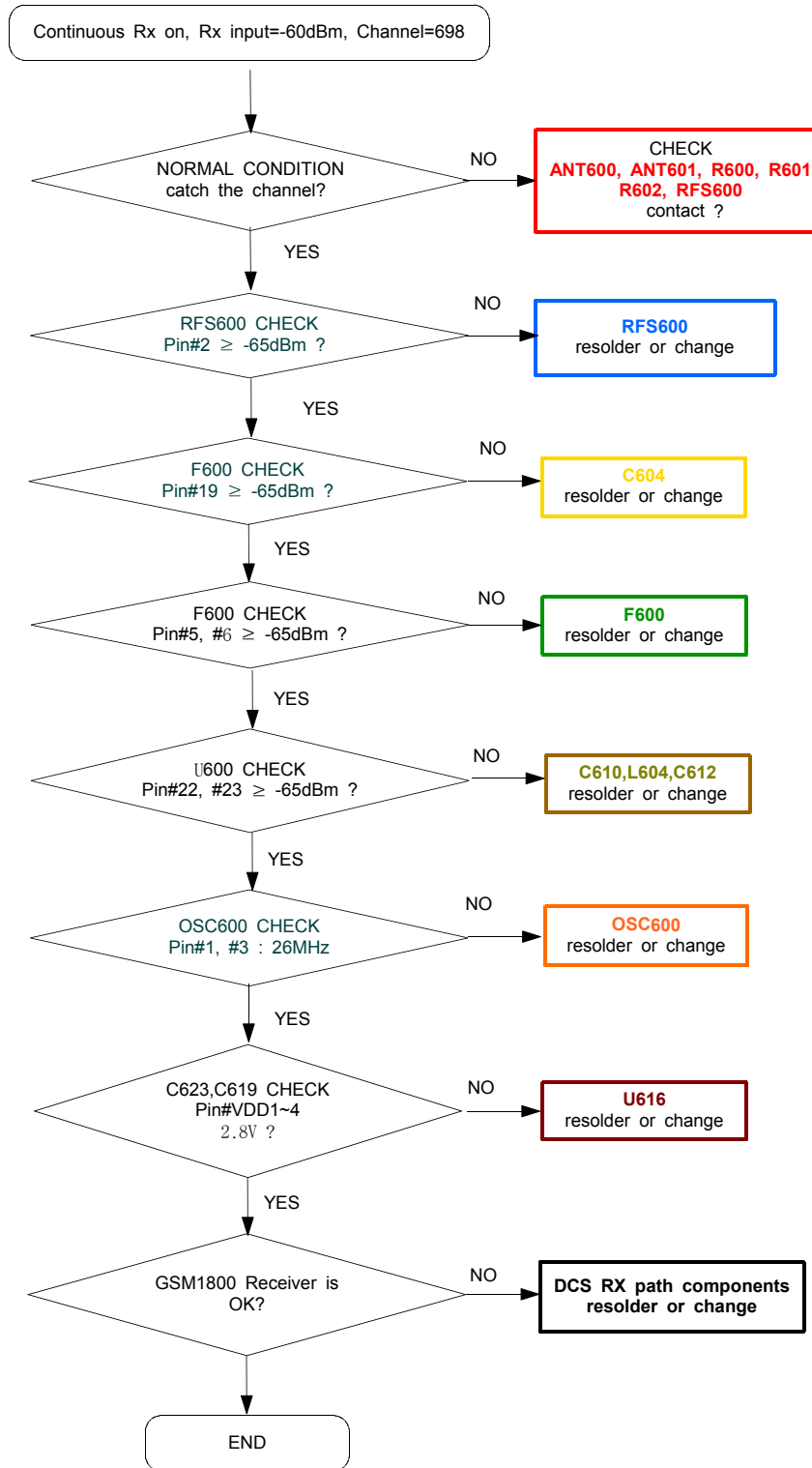
10-2-2. GSM RX- SLAVE



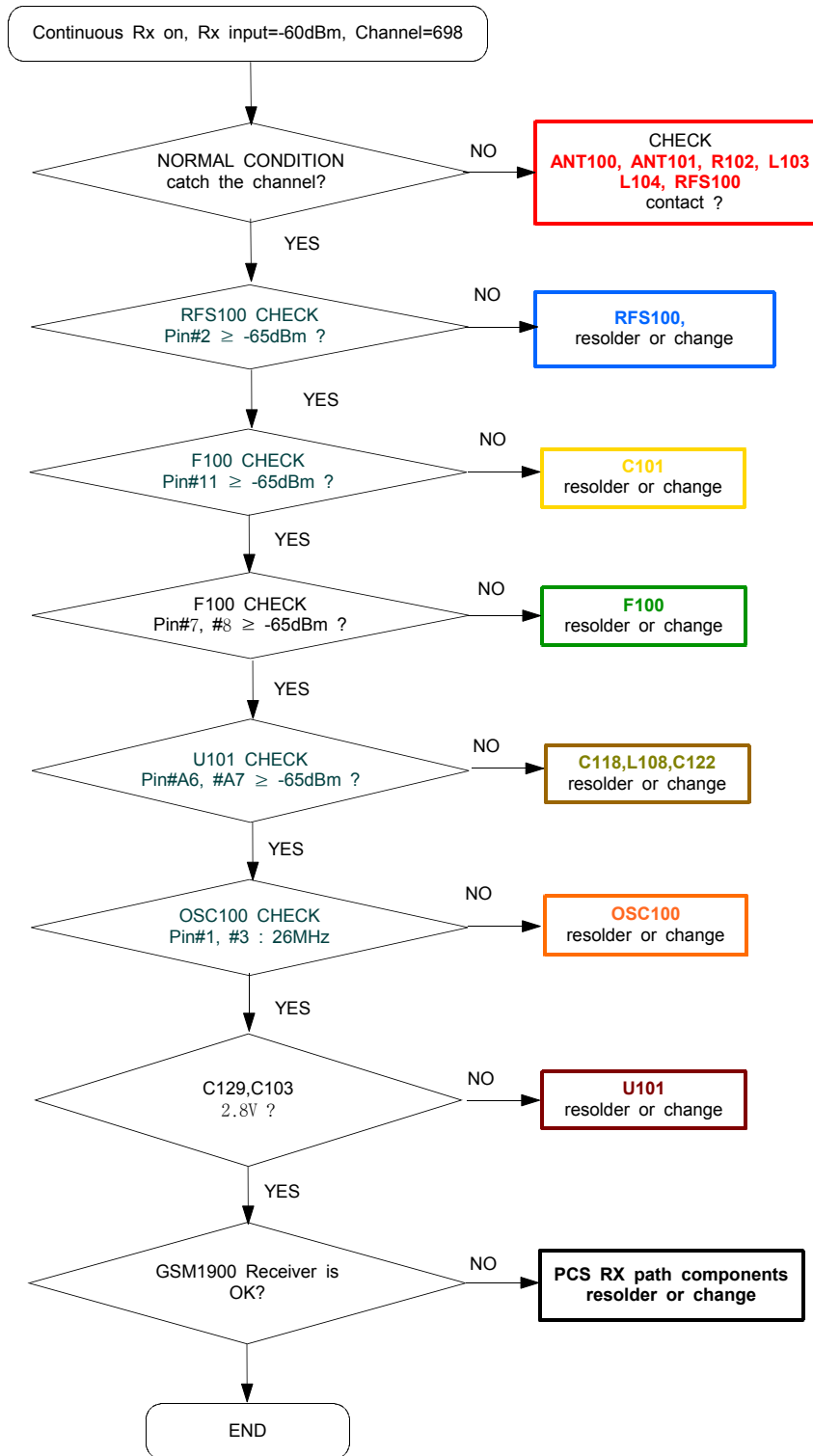
10-2-3. DCS RX- MASTER



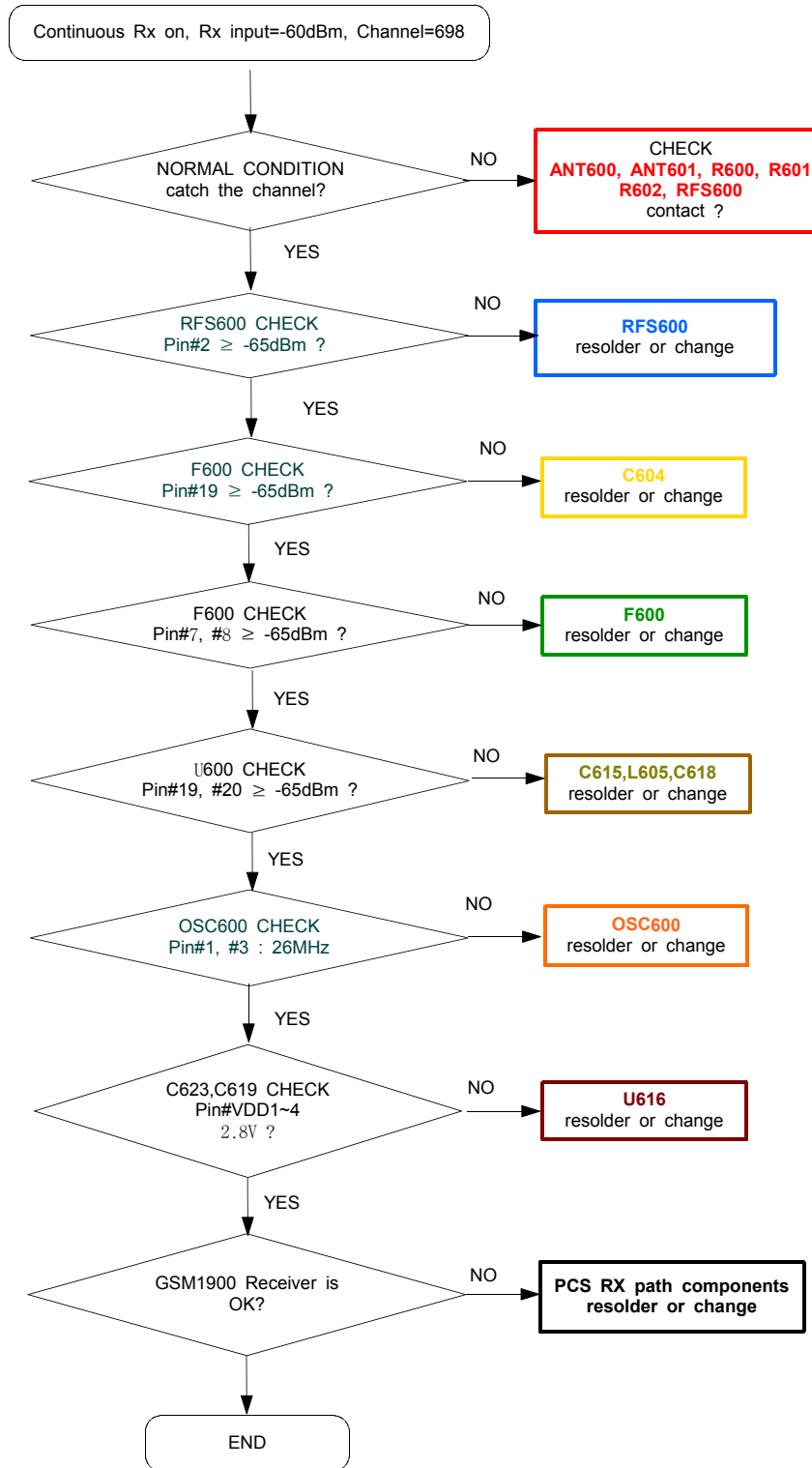
10-2-4. DCS RX- SLAVE



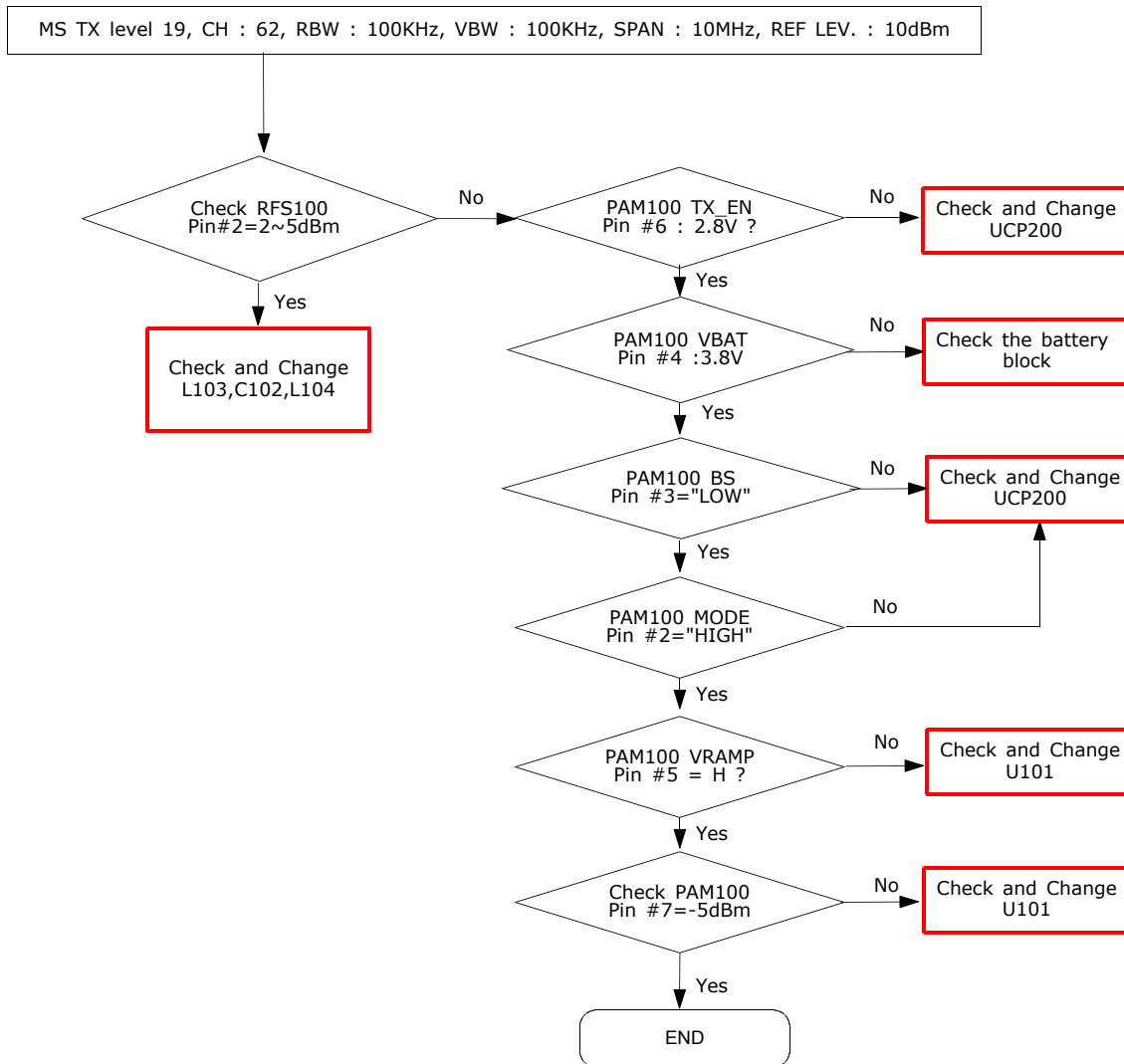
10-2-5. PCS RX- MASTER



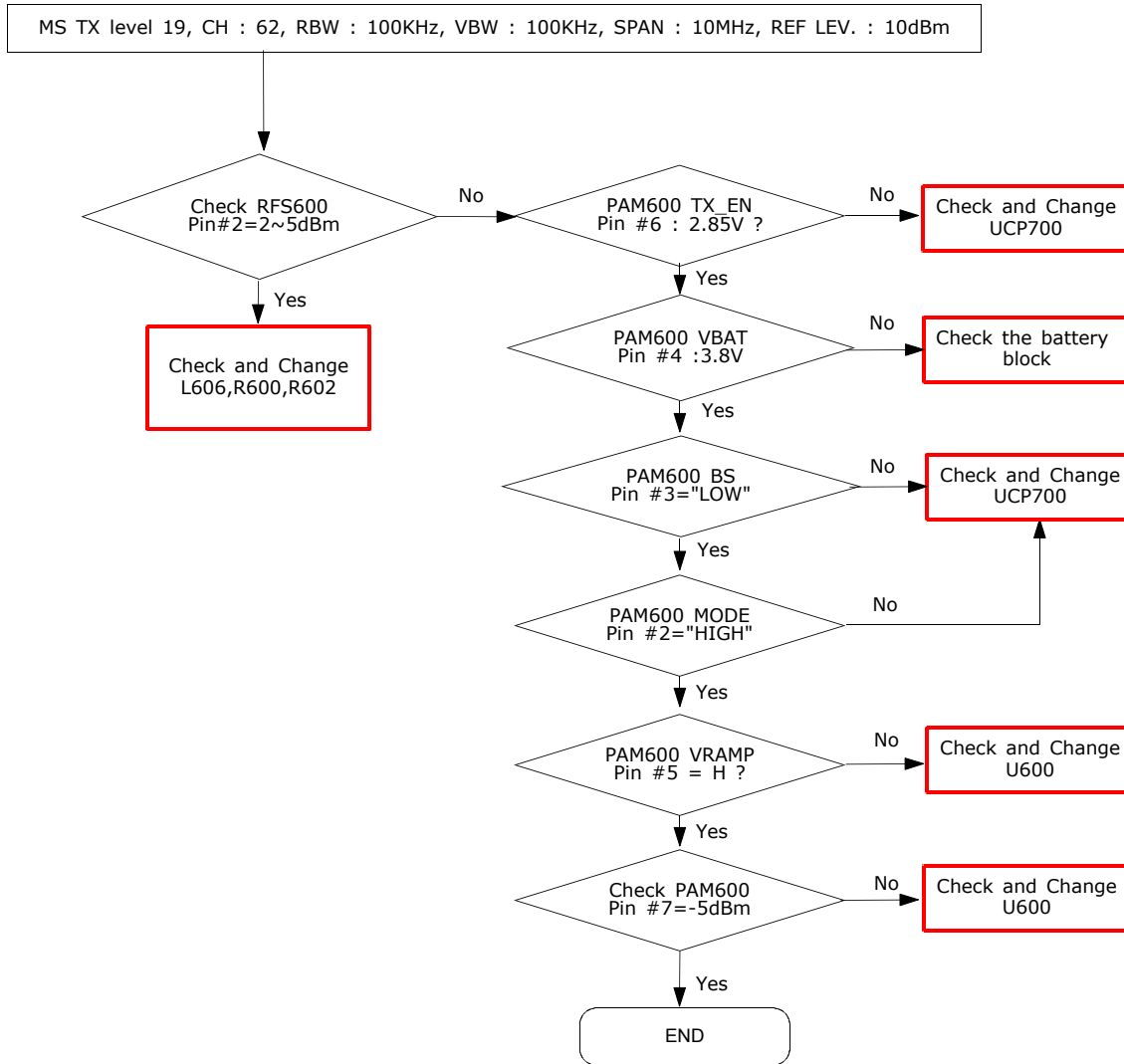
10-2-6. PCS RX- SLAVE



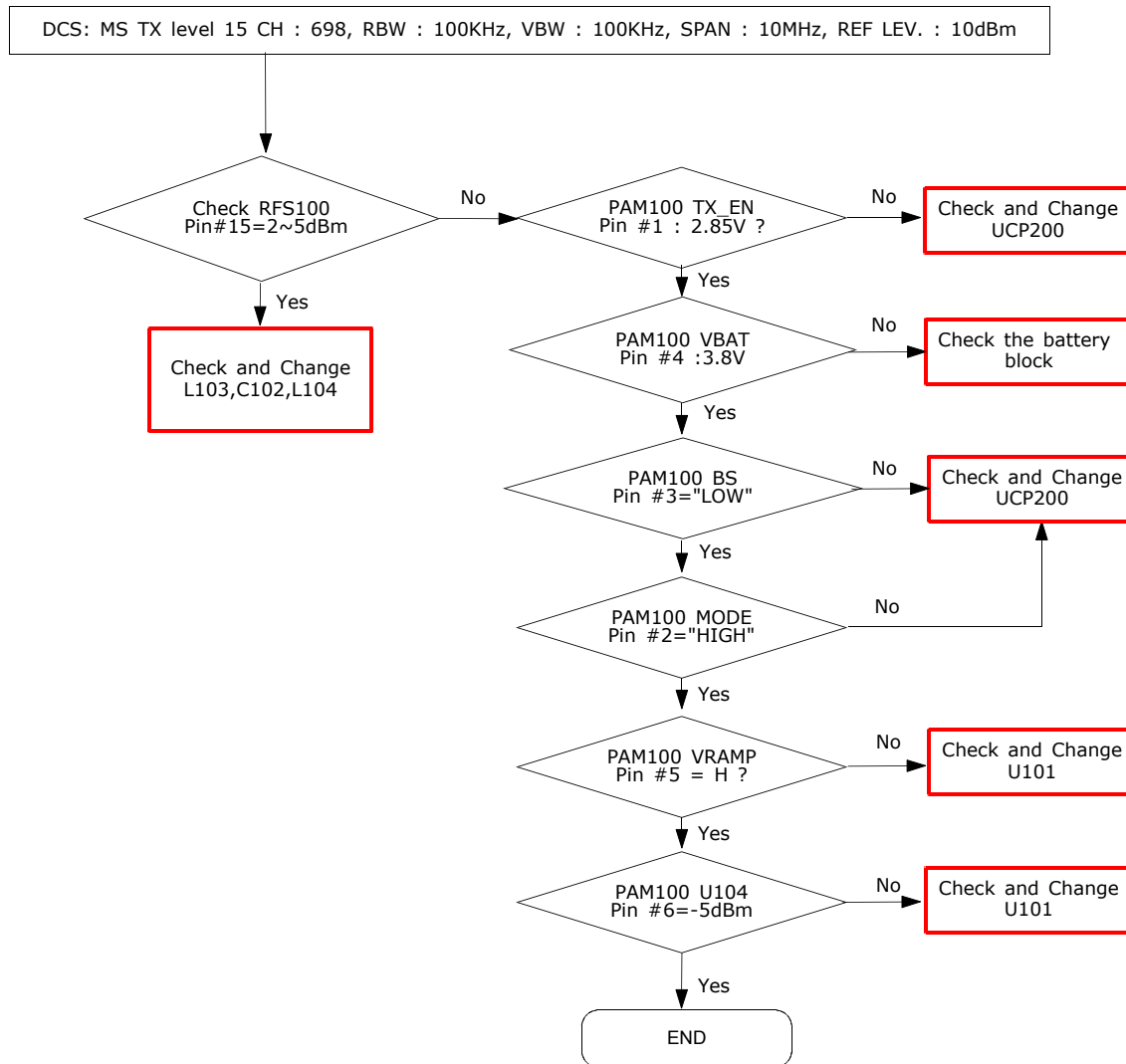
10-2-5. GSM900 TX - MASTER



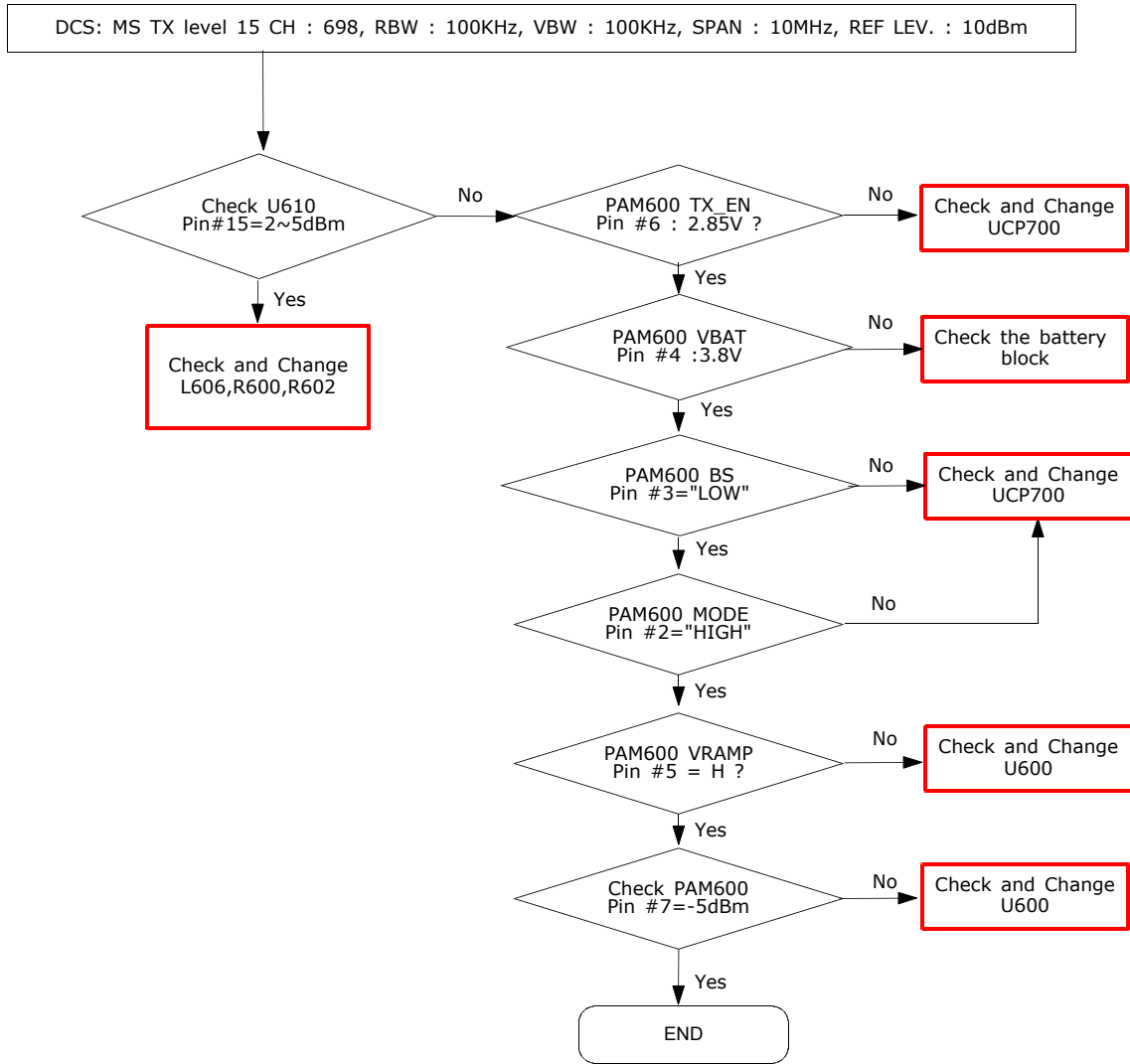
10-2-6. GSM900 TX - SLAVE



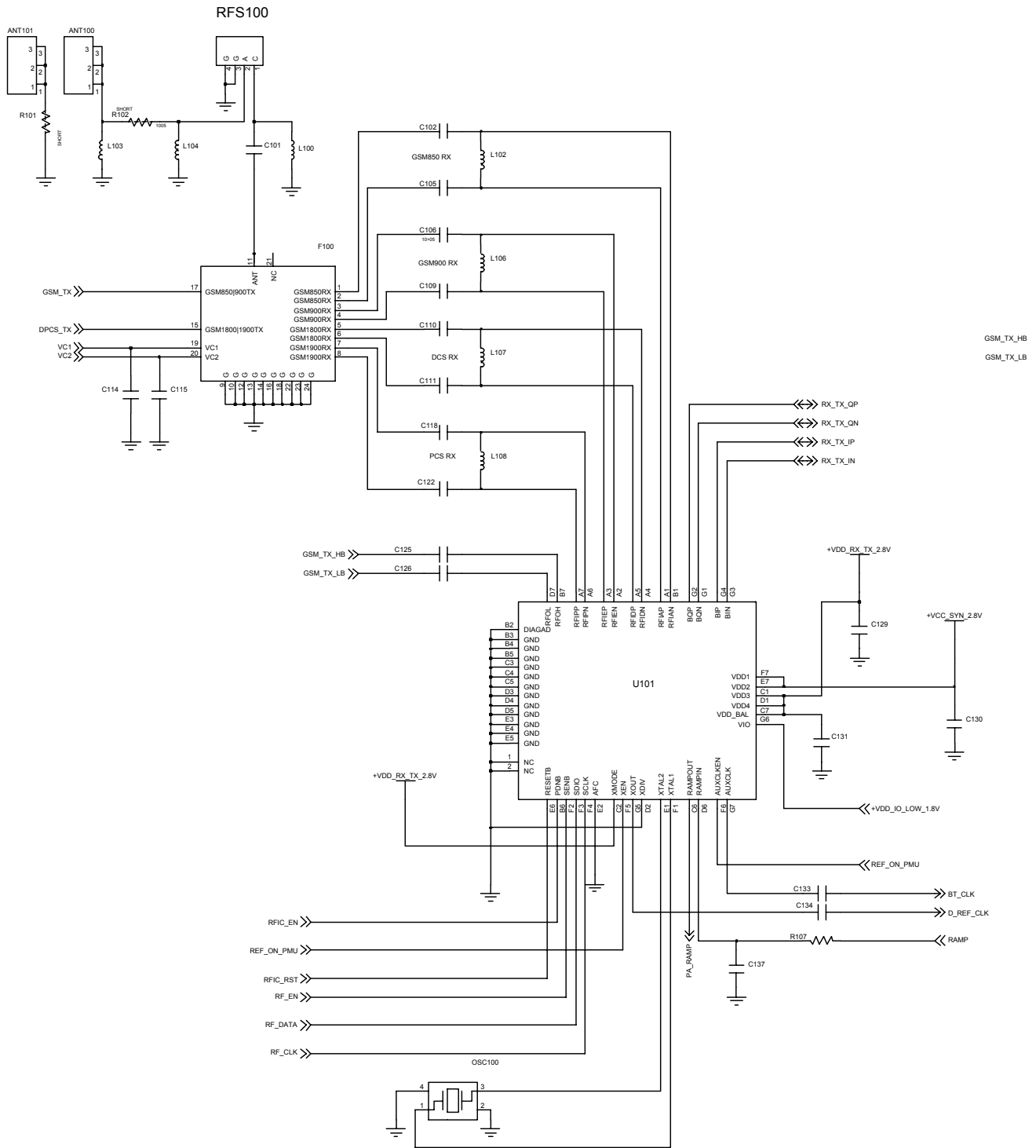
10-2-7. DCS/PCS TX- MASTER

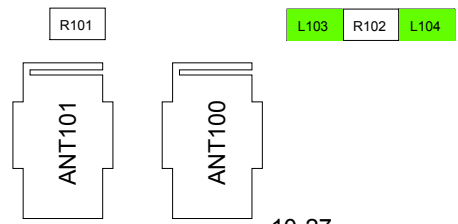
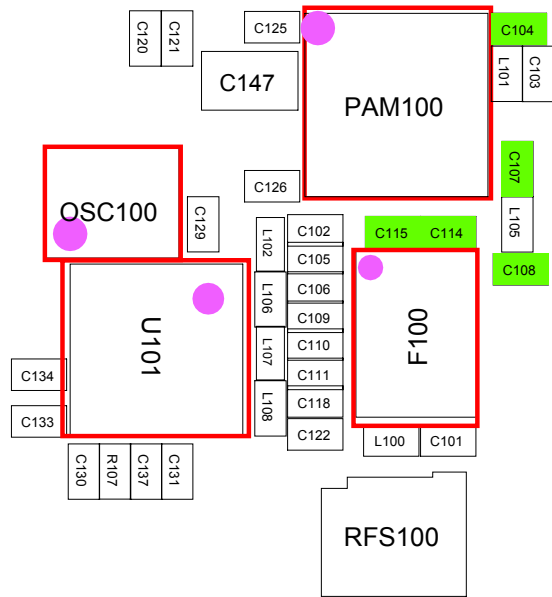
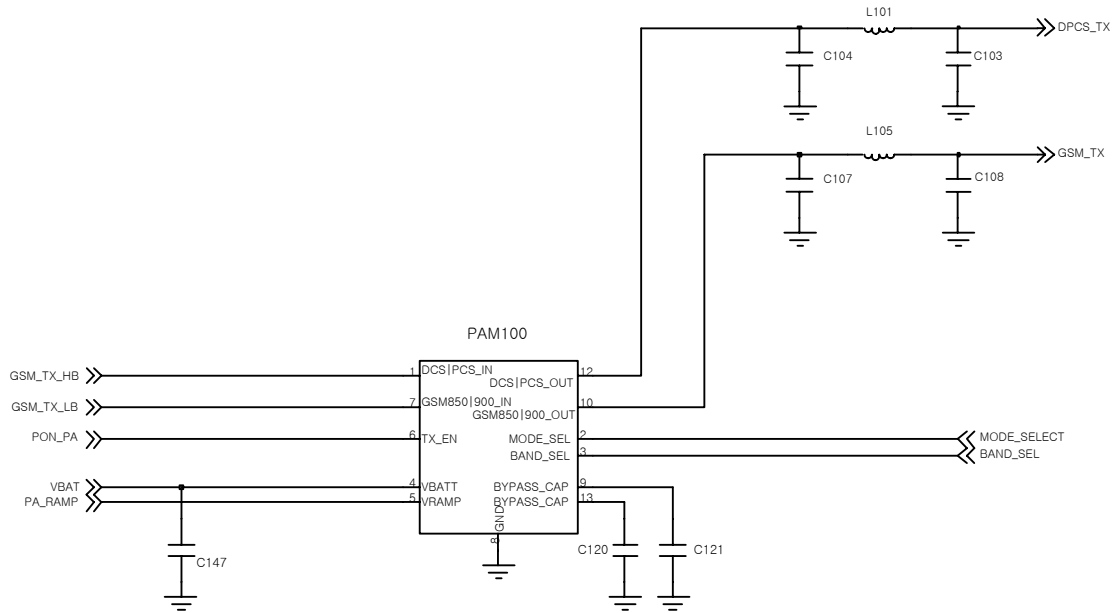


10-2-8. DCS/PCS TX- SLAVE

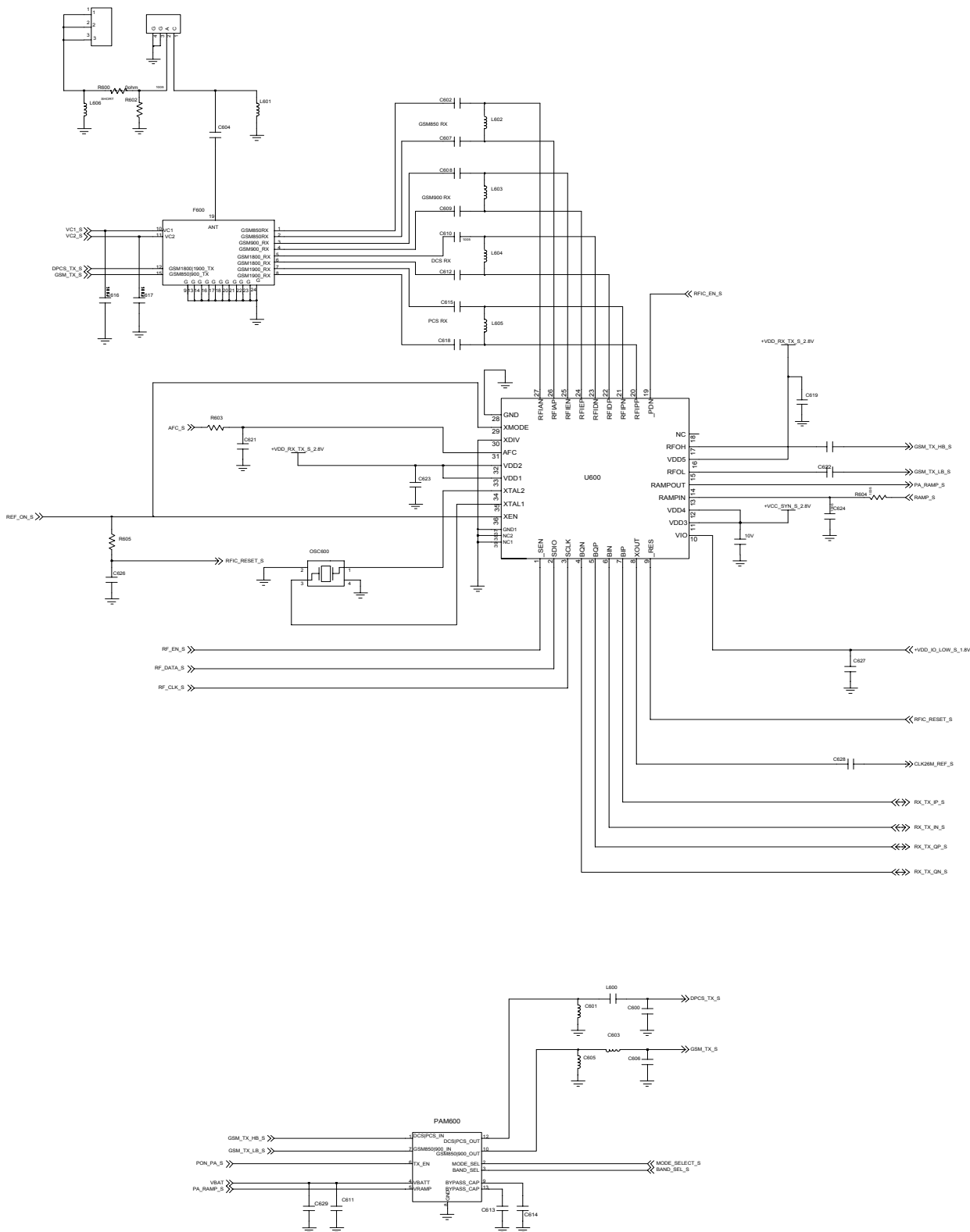


MASTER RF

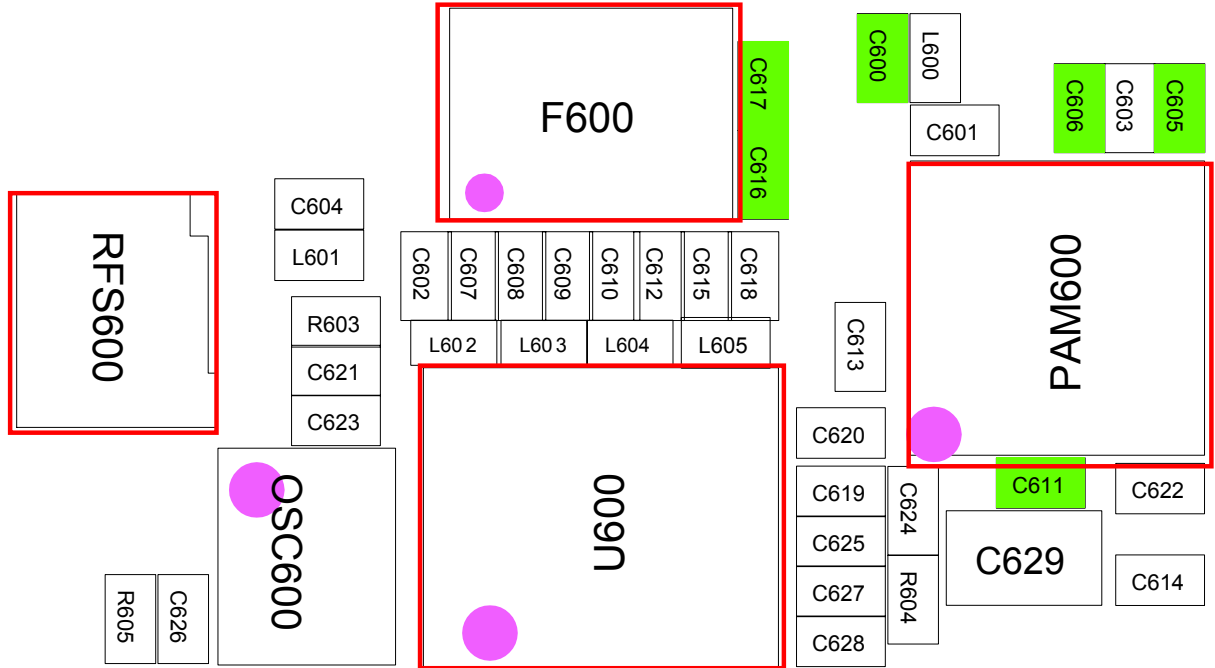
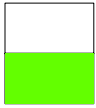




SLAVE RF

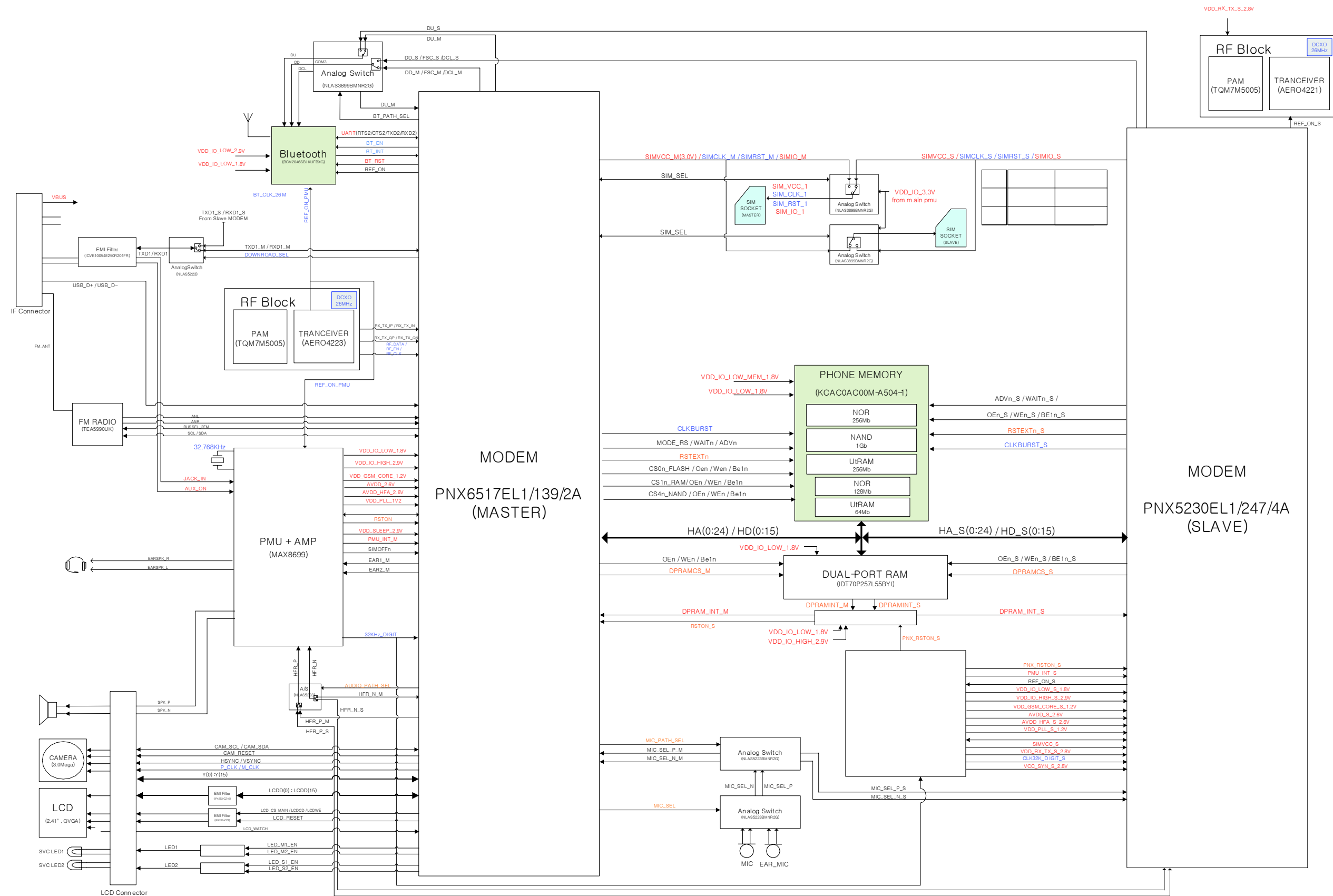


www.dianzi168.net

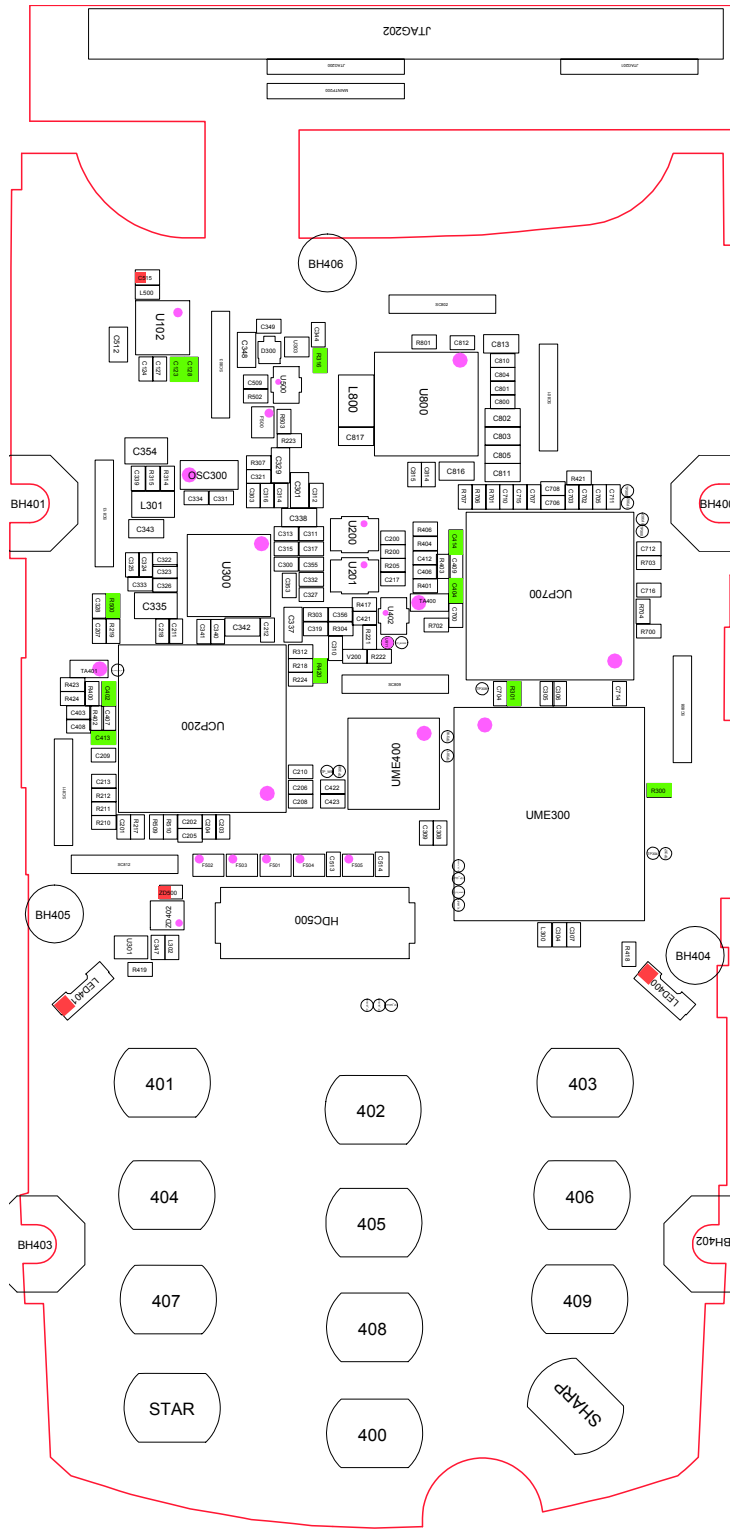


8. Block Diagrams

8-1. Block Diagram



[Main top view]



[Main Bottom view]

